

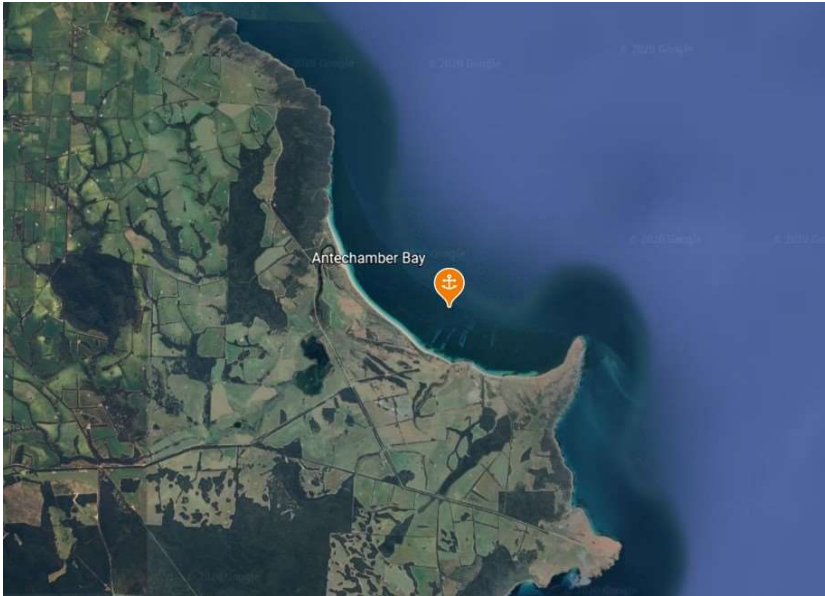
Antechamber Bay

Indicative Anchoring Position

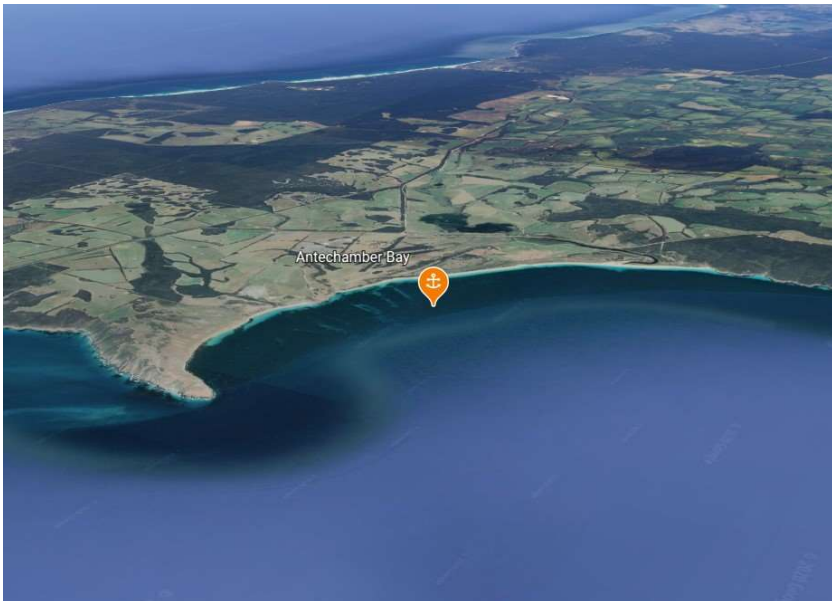
35° 47.9'S 138° 05.7'E

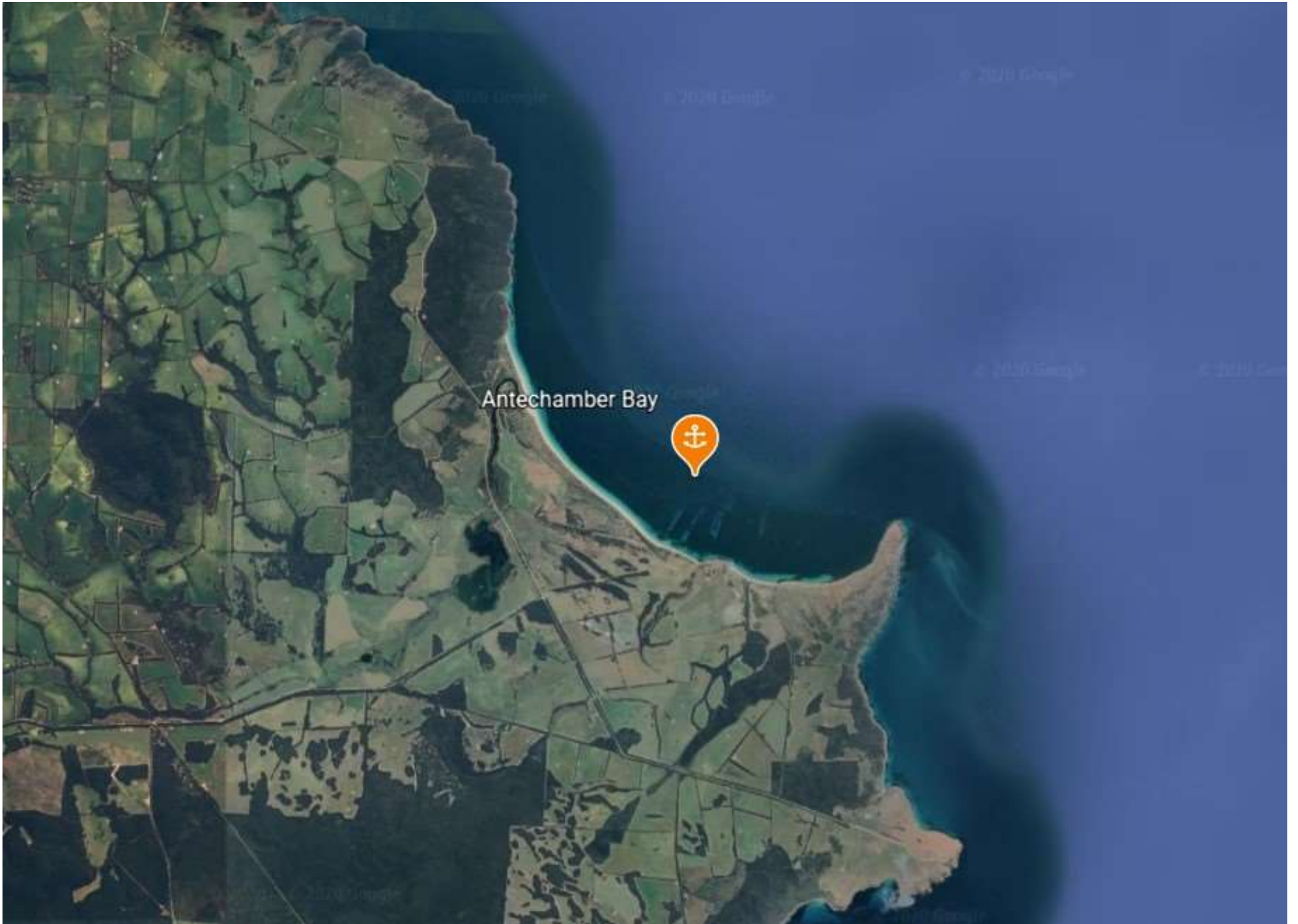
Shelter from SE – S – NW

Note. Indicative anchoring positions are for reference only and should not be used as waypoints.
The best position for anchoring depends on many factors including vessel draft, tide and forecast wind.



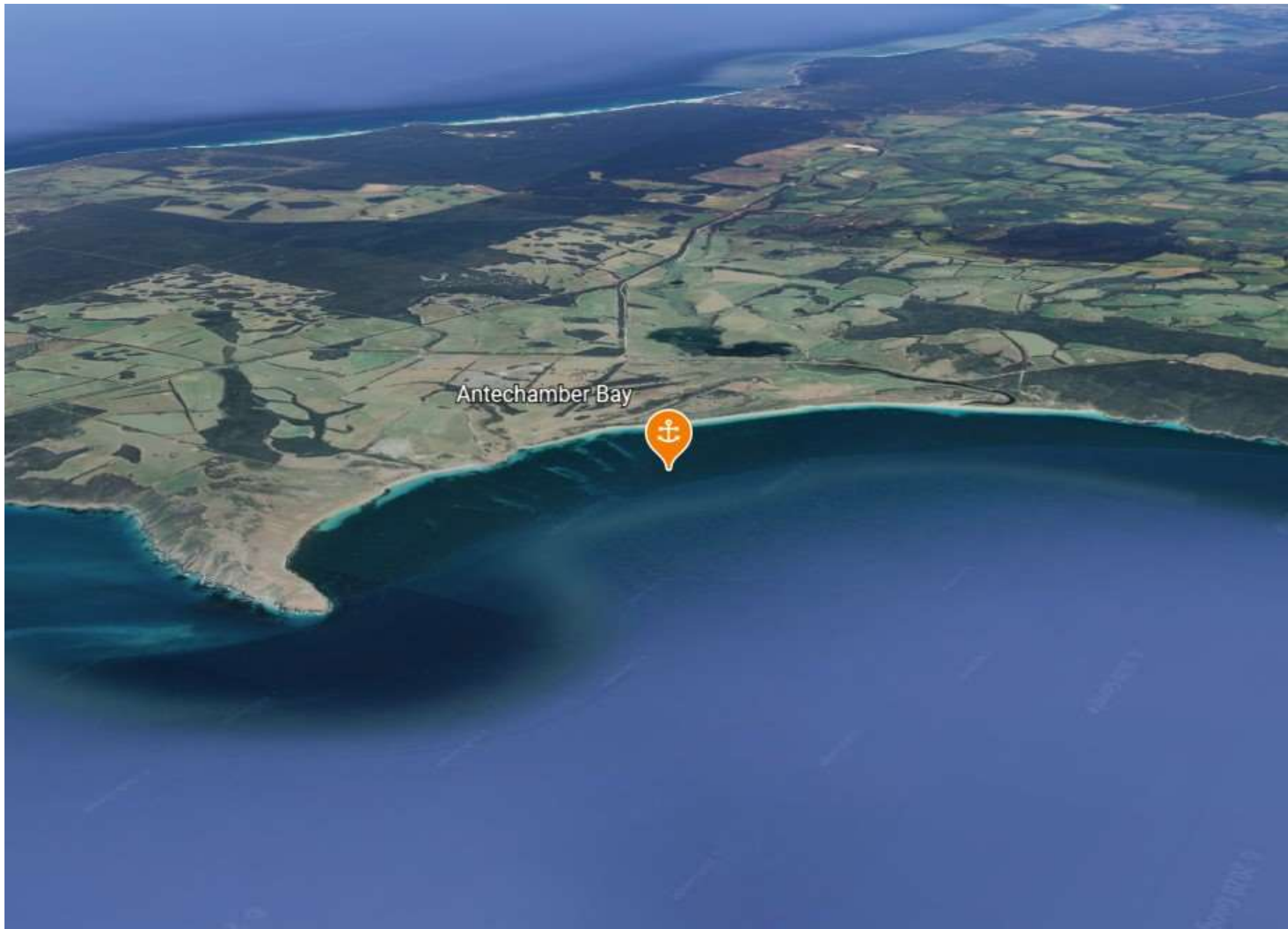
Antechamber Bay is a seldom visited anchorage except for vessels planning to head down the south east coast on a passage to Tasmania or the eastern seaboard. It is affected by the strong tidal stream in Backstairs Passage but is certainly worth visiting in the right weather conditions. It has a long attractive beach, and also allows easy access to the walking track to the Cape St Albans lighthouse which affords excellent views of the Fleurieu Peninsula and Cape Willoughby. The suggested anchorage position is for SW winds, but anchoring is also possible nearer to the western or eastern ends of the bay if conditions require.





Antechamber Bay





Antechamber Bay

