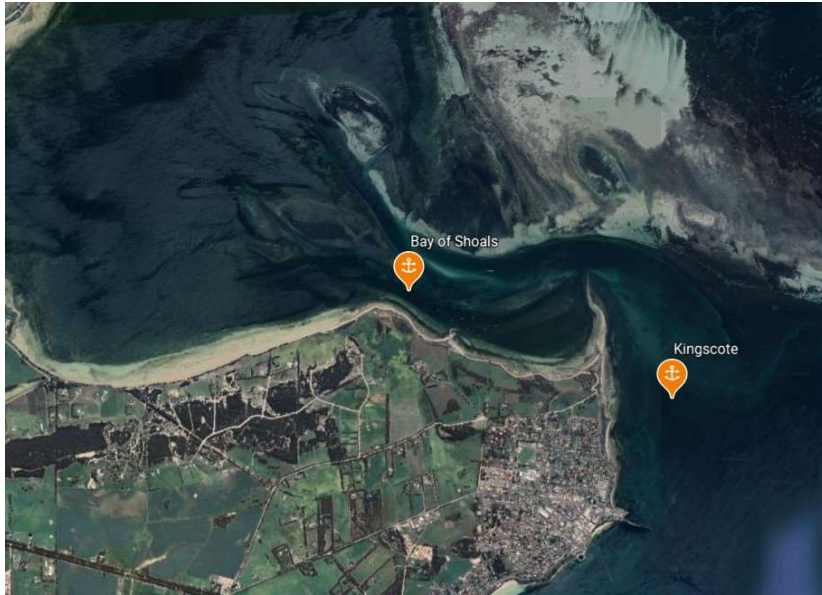


## Bay of Shoals

### Indicative Anchoring Position

35° 38.1'S 137° 37.4'E

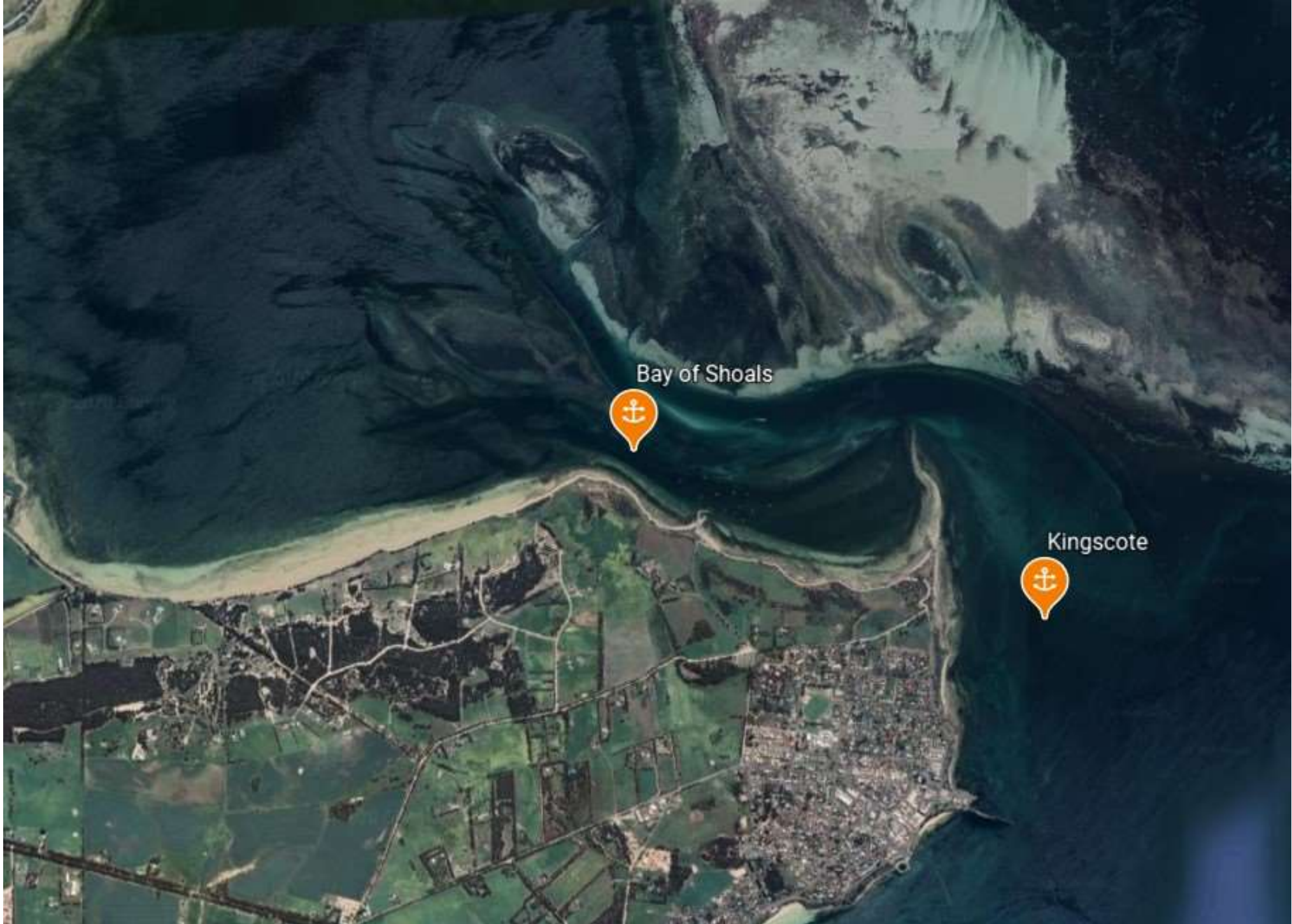


## Shelter from All Directions

*Note.* Indicative anchoring positions are for reference only and should not be used as waypoints. The best position for anchoring depends on many factors including vessel draft, tide and forecast wind.

The Bay of Shoals is a large expanse of mostly shallow water, with only a small area near in the south eastern corner having sufficient depth for yachts. The channel from Kingscote is well marked with beacons and entry is generally straightforward, although care is needed around low tide. It has protection from all directions but there is a long fetch across the water in prefrontal NW winds, and significant chop can be present.

The bottom in the anchorage area has thick weed and some vessels have reported dragging.



Bay of Shoals



Kingscote





Bay of Shoals

