

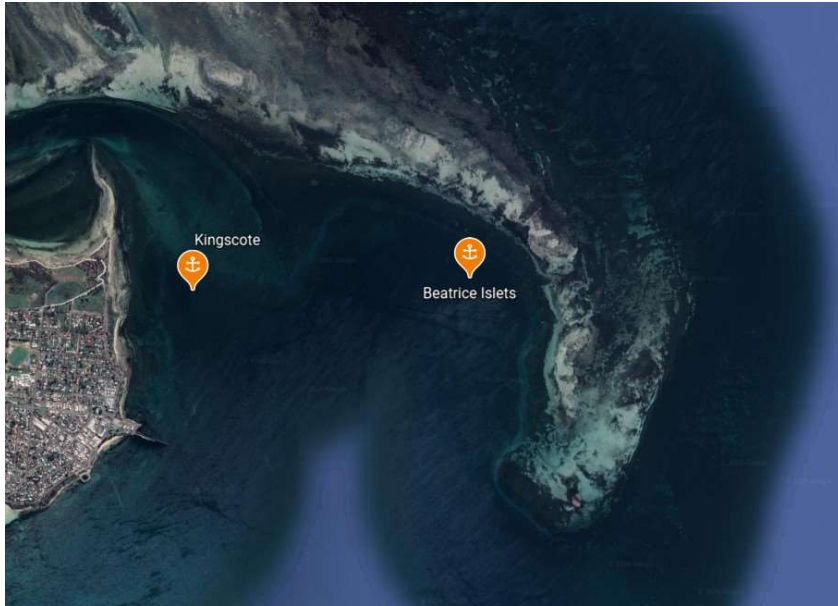
Beatrice Islets

Indicative Anchoring Position

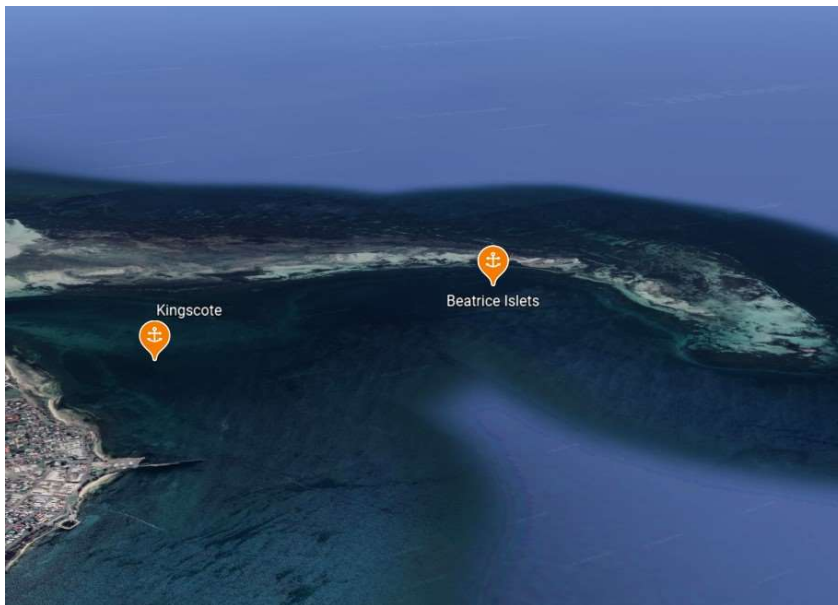
35° 38.5'S 137° 40.5'E

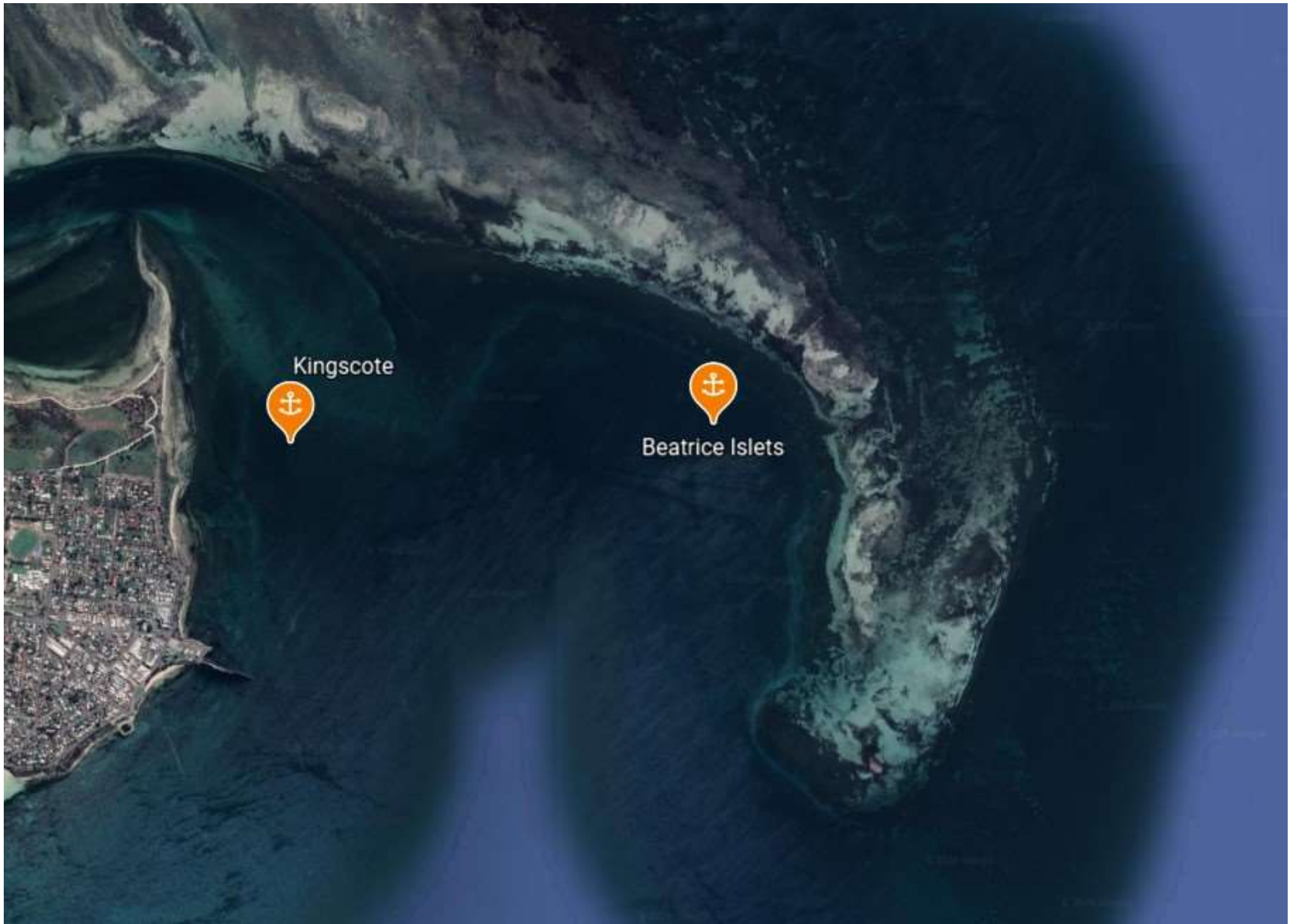
Shelter from N – E – SE

Note. Indicative anchoring positions are for reference only and should not be used as waypoints.
The best position for anchoring depends on many factors including vessel draft, tide and forecast wind.



This is an unusual but very interesting anchorage about 2 miles north east of the Kingscote jetty. The islets are sandy banks which are exposed at low tide but completely covered at high tide. They provide no shelter from the wind, but do stop the swell. It is necessary to proceed carefully as the water depth decreases, and use plenty of chain when anchoring as the holding is not good.

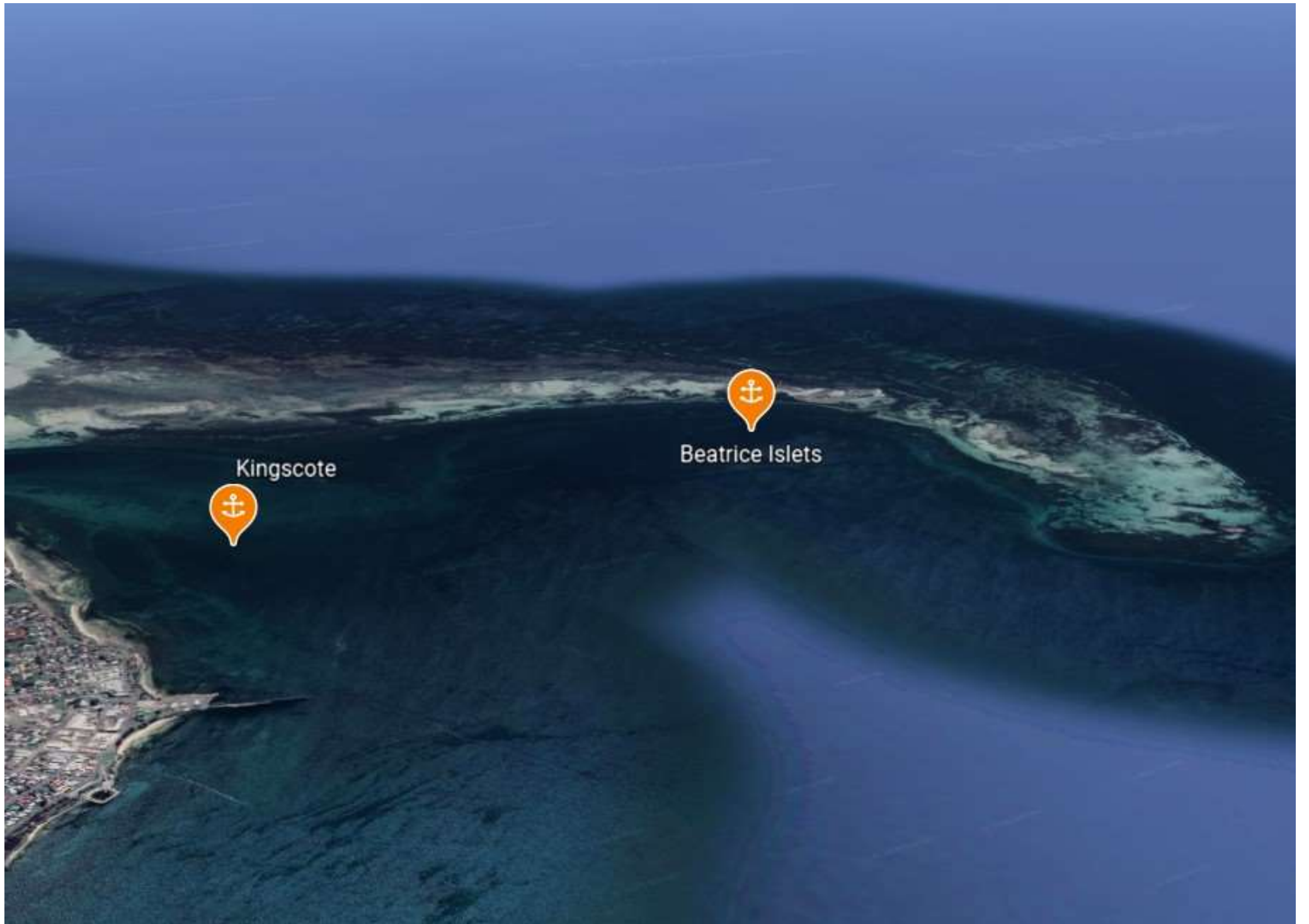




Kingscote



Beatrice Islets



Kingscote

Beatrice Islets