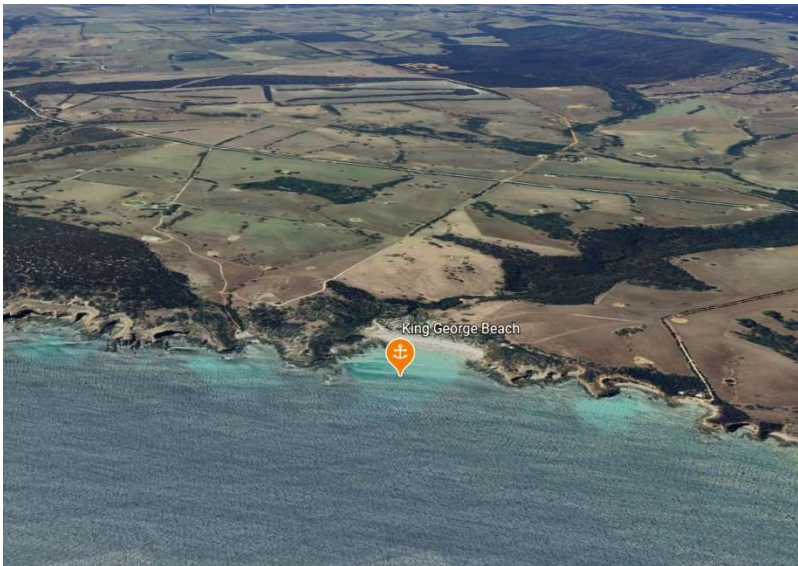
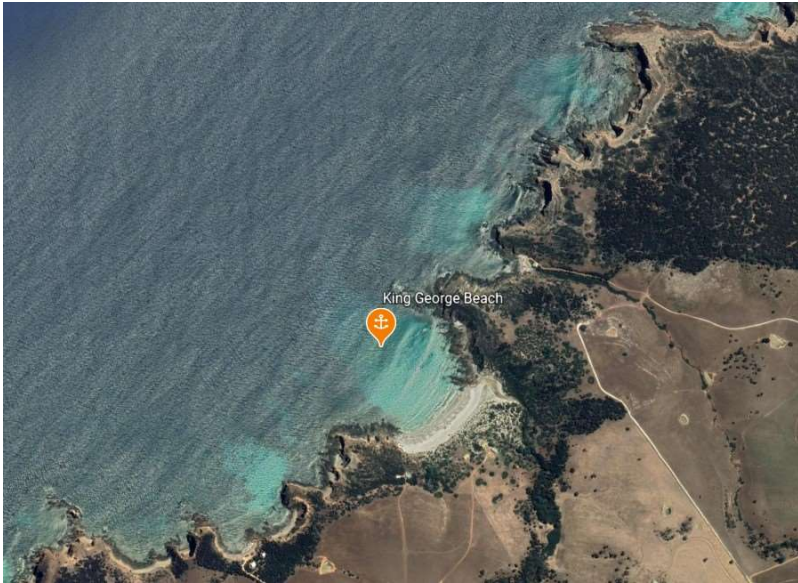


King George Beach

Indicative Anchoring Position

35° 38.95'S 137°07.15'E

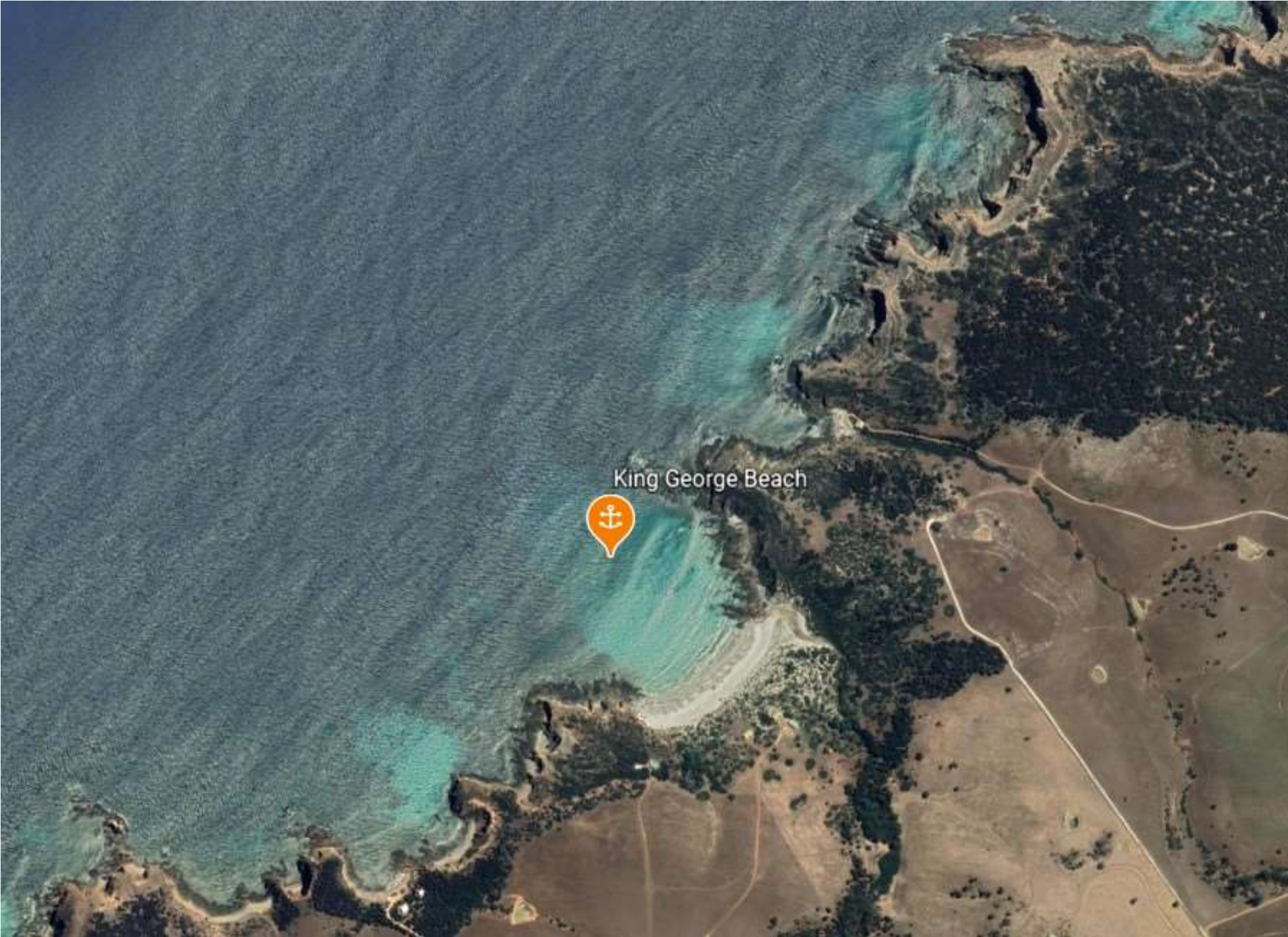


Shelter from NE – E – S

Note Indicative anchoring positions are for reference only and should not be used as waypoints.
The best position for anchoring depends on many factors including vessel draft, tide and forecast wind.

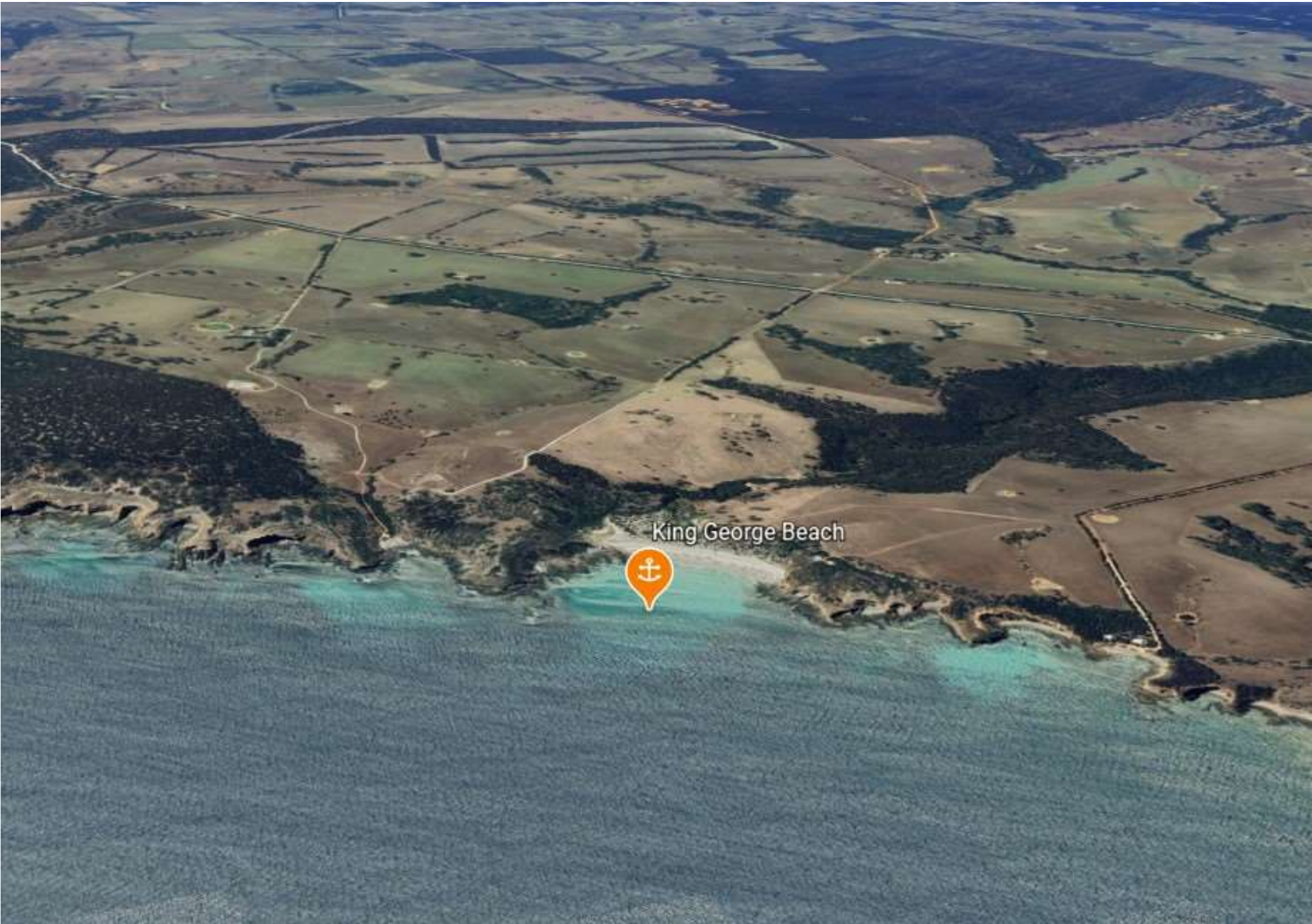
King George Beach (also known as Hawks Nest) is a delightful anchorage with good holding in sand, and an attractive sandy beach on which dinghy landing is possible. It has a rocky reef extending about 150 m on the northern side which gives protection from NE winds, but the anchorage is very exposed to a westerly swell.

It should be noted that although this anchorage and others along this coast may be uncomfortable overnight if a westerly swell develops, they can still be used for very enjoyable daytime stops as the distance to anchorages with better westerly protection is not great – for example, the distance from King George Beach to Western River Cove is less than 8 miles



King George Beach





King George Beach

