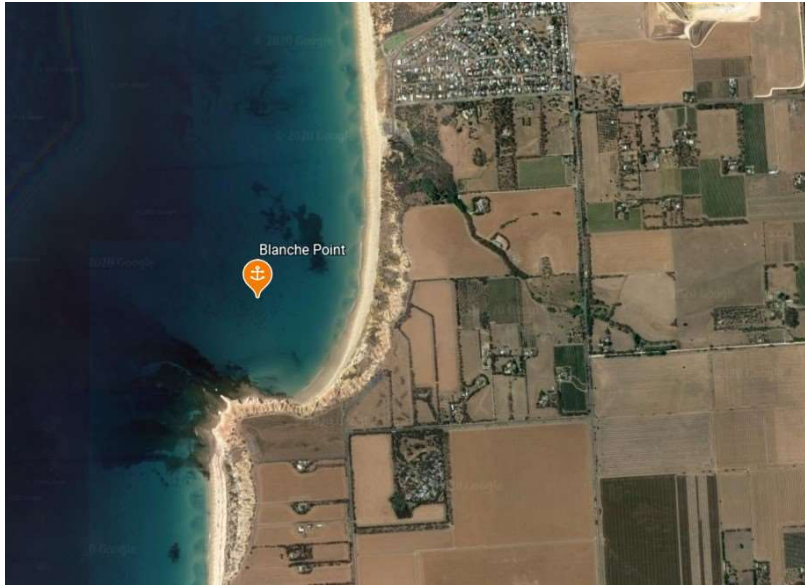


Blanche Point

Indicative Anchoring Position

35° 14.5'S 138° 27.8'E

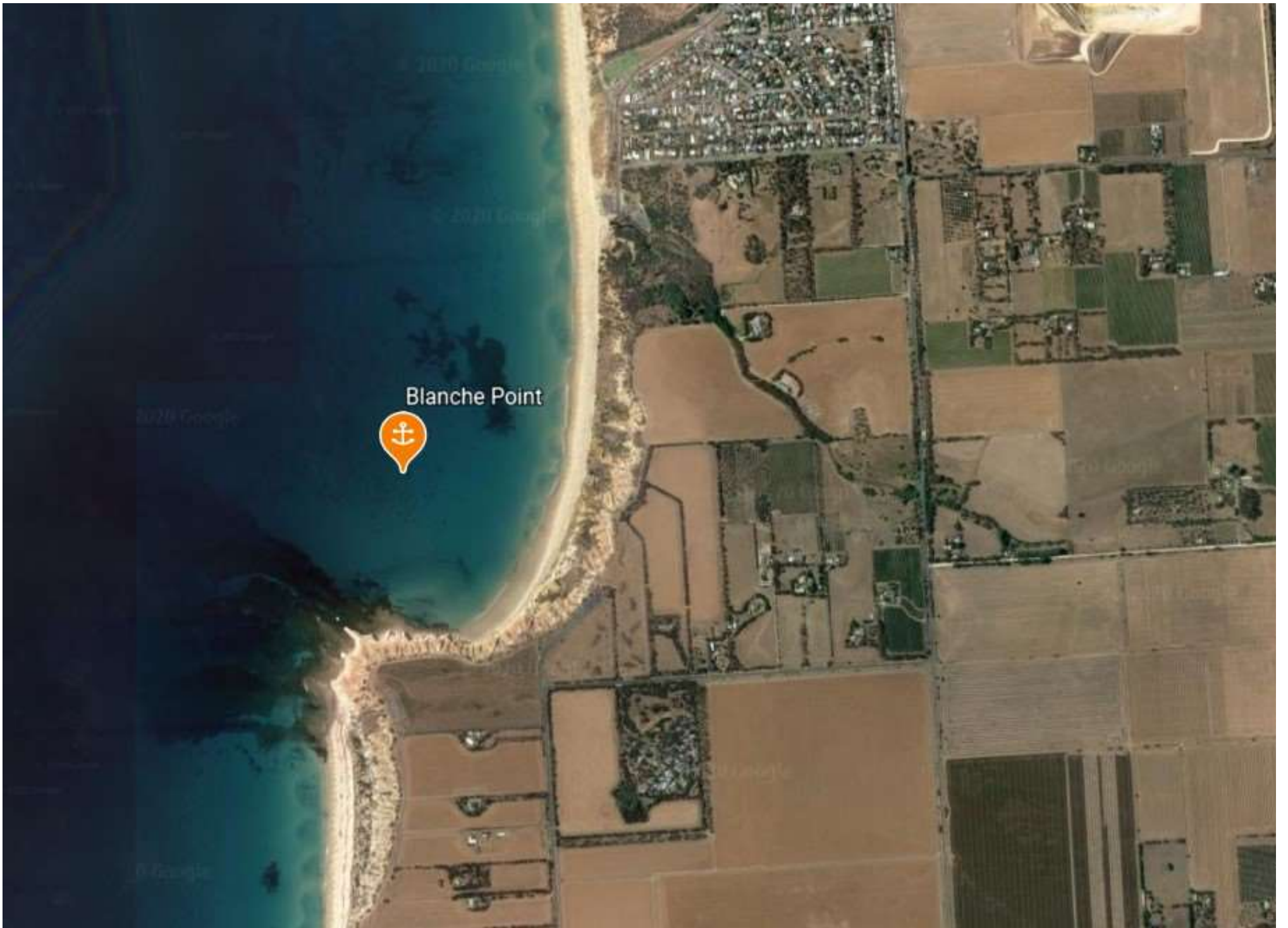


Shelter from NE – E – SE

Note. Indicative anchoring positions are for reference only and should not be used as waypoints. The best position for anchoring depends on many factors including vessel draft, tide, and forecast wind.

Blanche Point is an attractive anchorage at the southern end of Maslins Beach. A small reef extends north west from the headland, and provides some shelter from the SW swell. Holding is good in sand, and the best position is tucked in to the south-eastern corner of the bay, but even there the SW swell can still be uncomfortable.

Shore access is easy, but remember that Maslins is a nudist beach and you should choose your attire appropriately!



Blanche Point

