

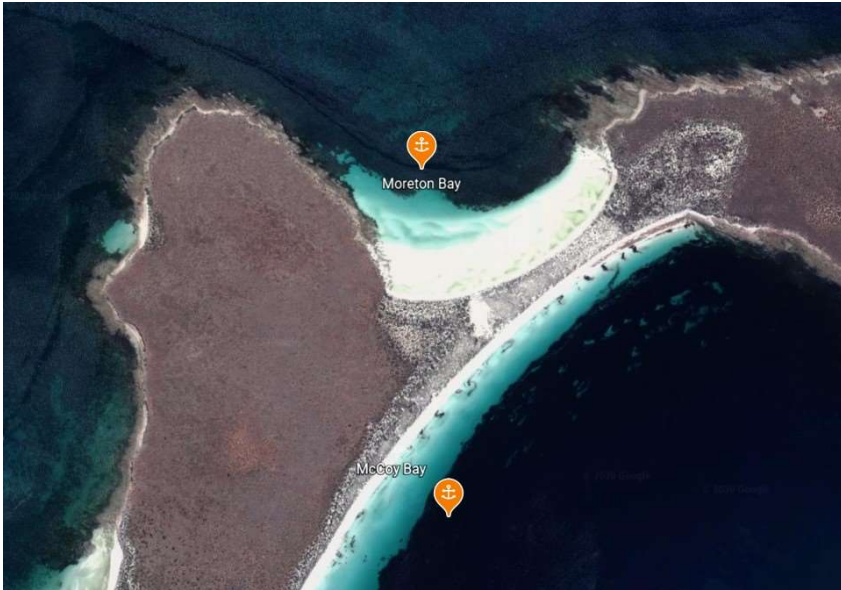
Moreton Bay

Indicative Anchoring Position

34° 30.2'S 136° 17.3'E

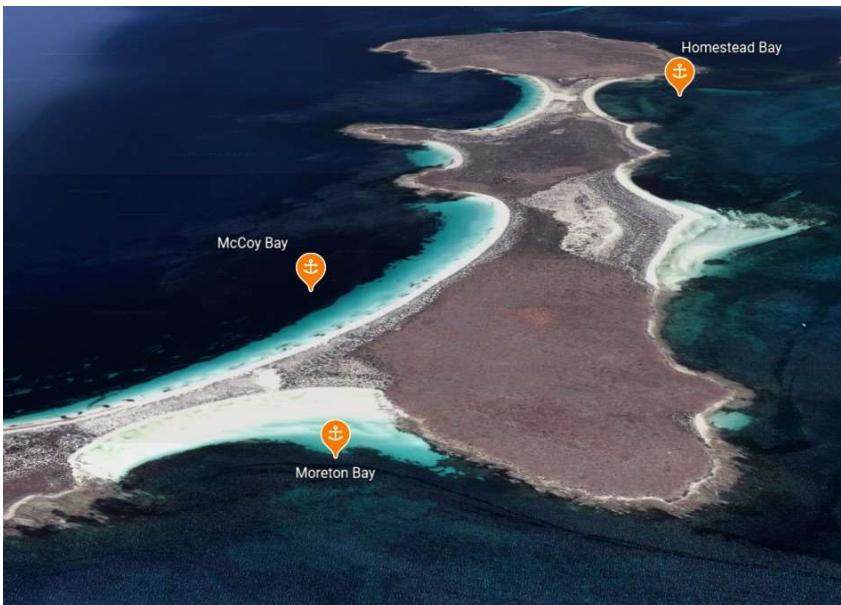
Shelter from SE – S – SW

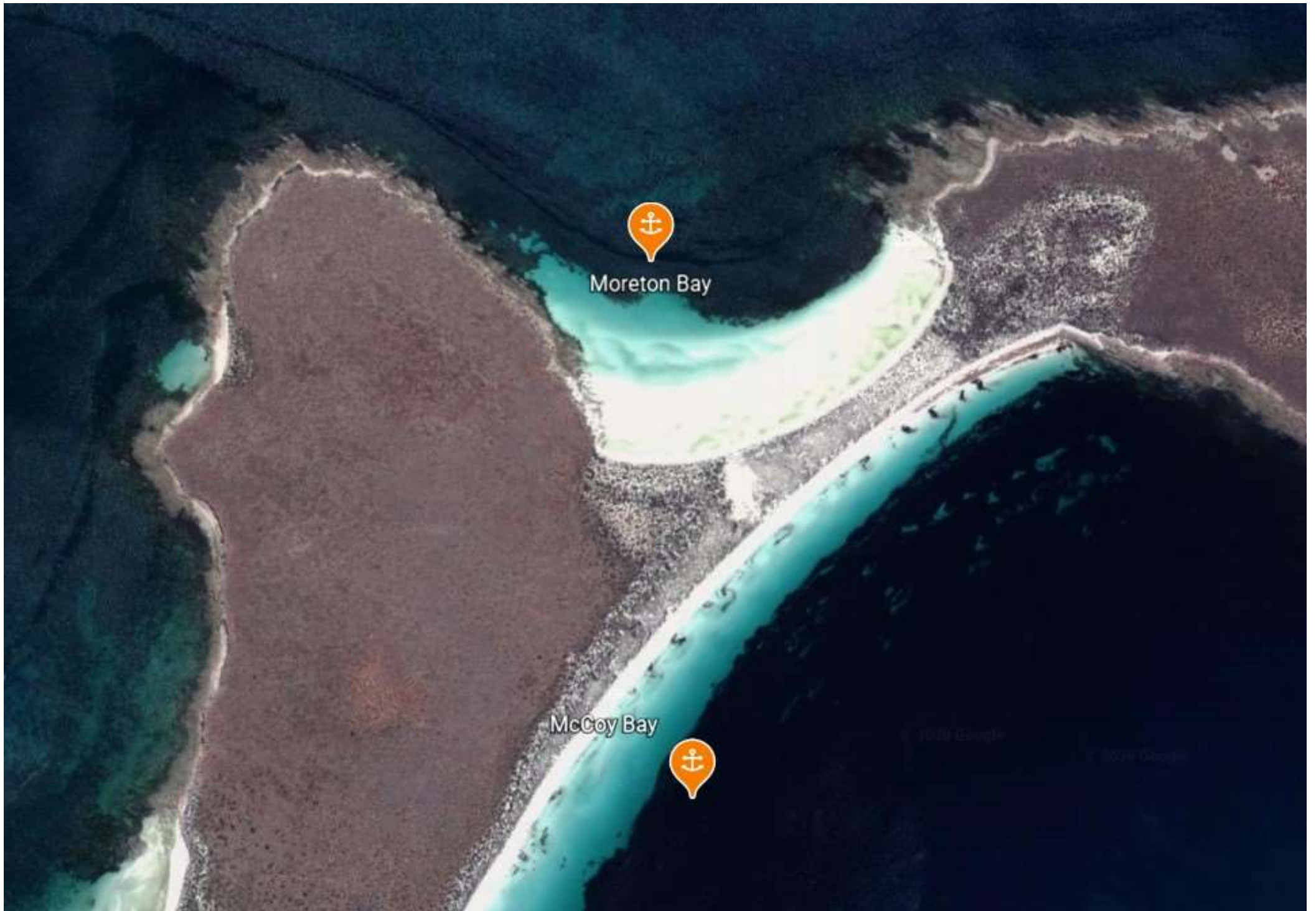
Note. Indicative anchoring positions are for reference only and should not be used as waypoints. The best position for anchoring depends on many factors including vessel draft, tide, and forecast wind.



Moreton Bay on the northern end of Reevesby Island is a beautiful anchorage with a brilliantly white sandy beach. The holding is good in deep sand, and the western part of the bay is completely free of weed.

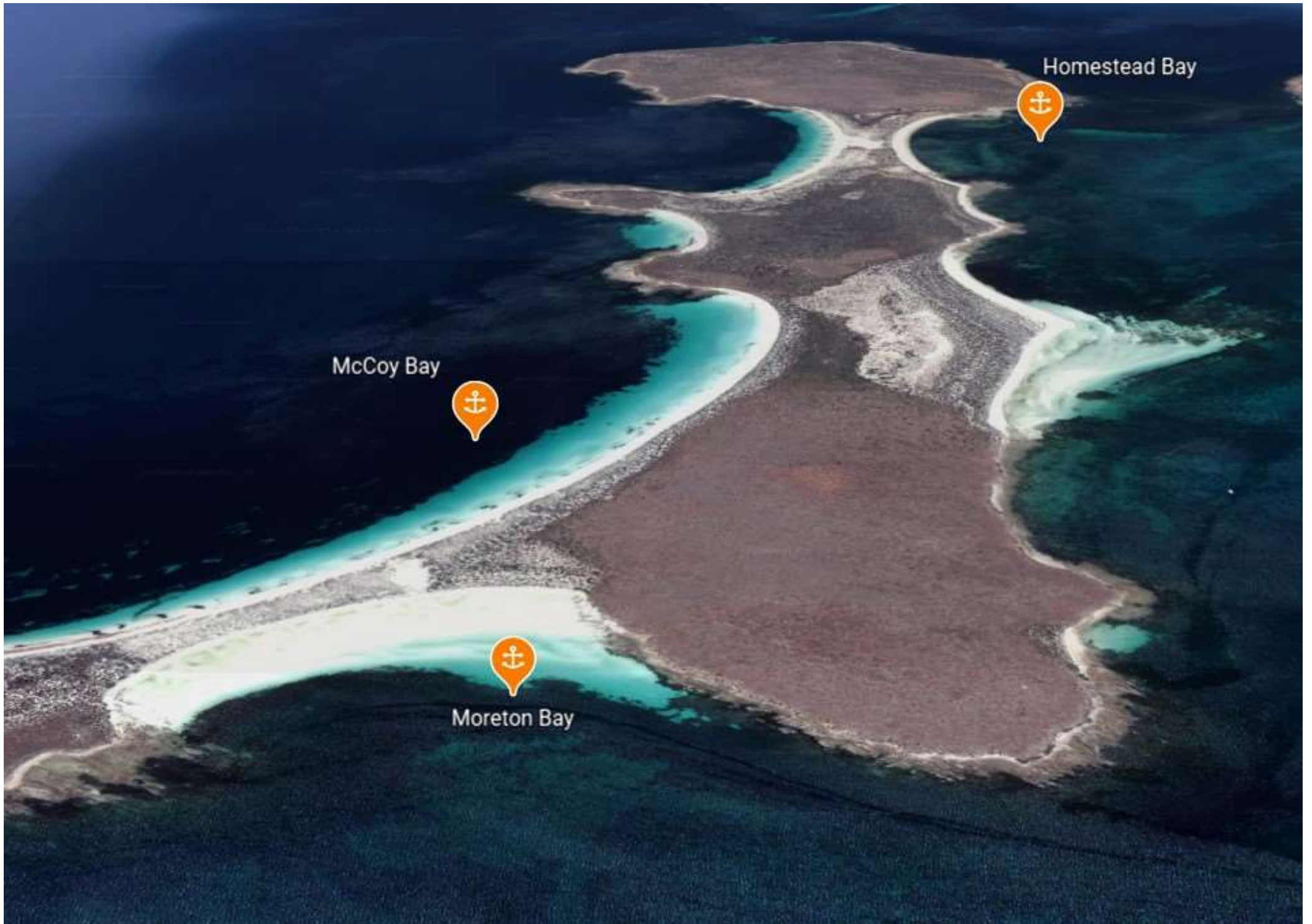
Shore access is easy, and lovely walks are possible once ashore.





Moreton Bay

McCoy Bay



Homestead Bay



McCoy Bay



Moreton Bay

