

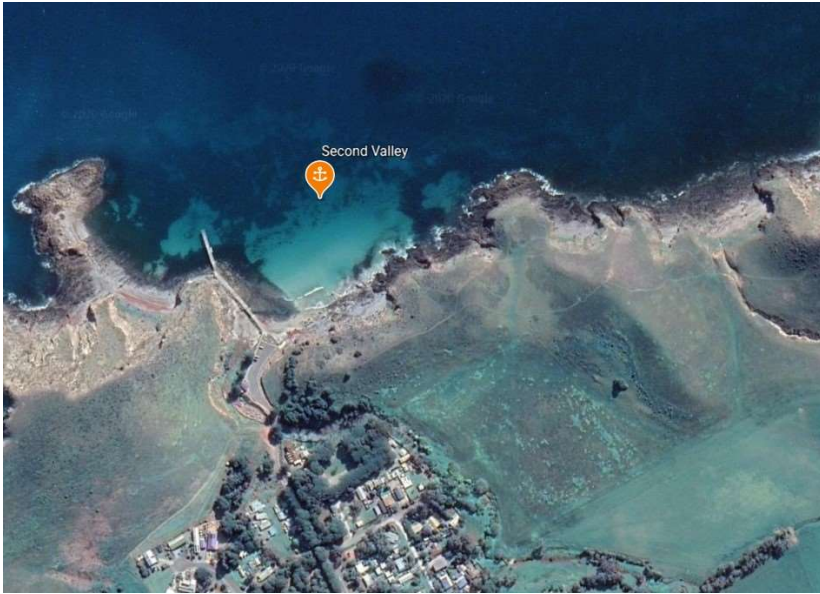
Second Valley

Indicative Anchoring Position

35° 30.6'S 138° 13.1'E

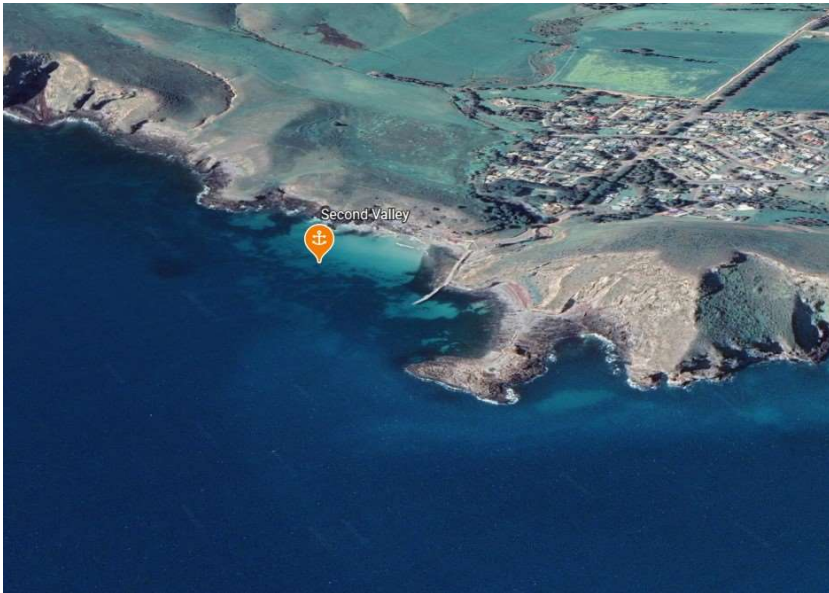
Shelter from E – SE – S

Note. Indicative anchoring positions are for reference only and should not be used as waypoints. The best position for anchoring depends on many factors including vessel draft, tide, and forecast wind.



This anchorage is a small cove in Yankalilla Bay about one mile south west of Wirrina Cove. It is sheltered from the south and, to some extent from the south west, by a rocky headland extending approximately 200 metres from the shore. The best anchoring position is east of the jetty where the bottom is sand and the holding good.

Shore access can be tricky due to the rocky shore line.



Second Valley

