

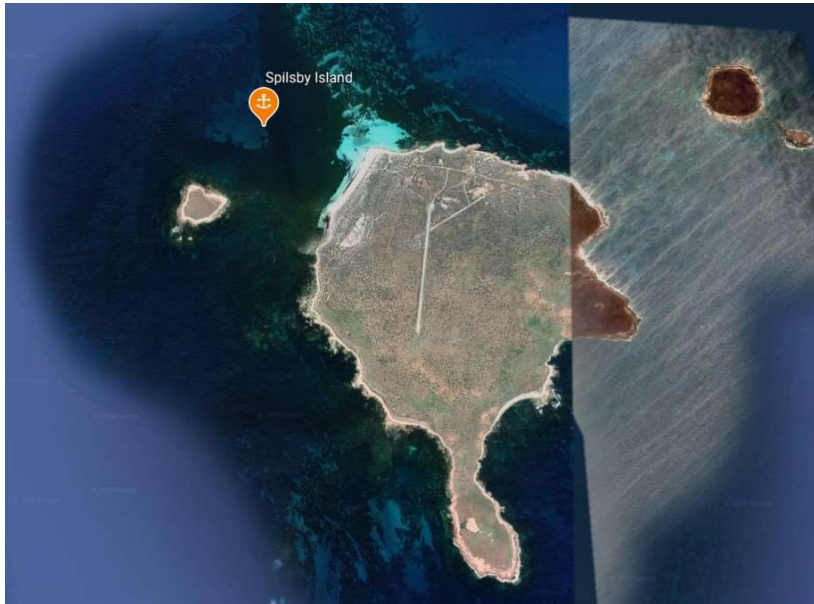
Spilsby Island

Indicative Anchoring Position

° 39.0'S 136° 19.6'E

Shelter from NE – SE – SW

Note. Indicative anchoring positions are for reference only and should not be used as waypoints. The best position for anchoring depends on many factors including vessel draft, tide, and forecast wind.

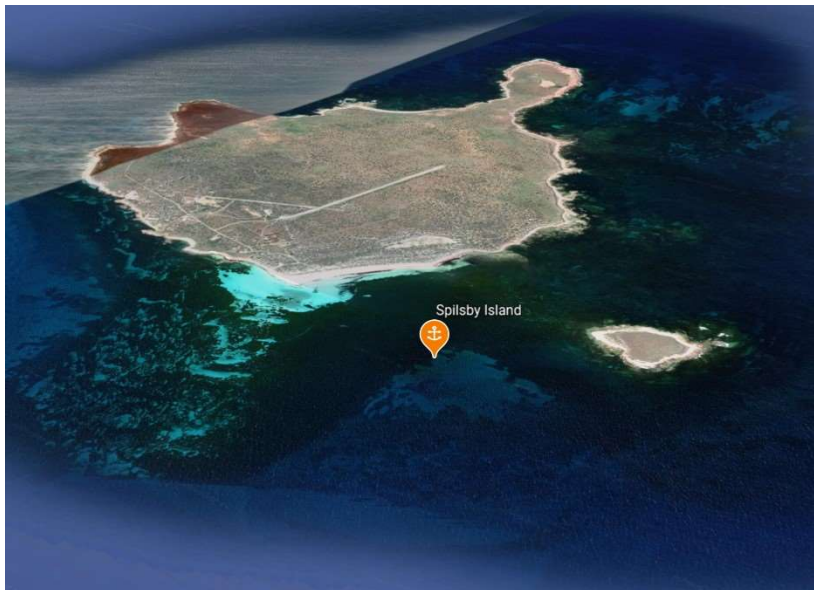


Spilsby Island is a large flat island about six miles sou-sou-east of Reevesby. The anchorage is just north of a sand spit running west from the north end of the island to Duffield Islet. Another sand spit runs north from the northern tip of the island, and this also gives some protection from north-easterly weather.

The bottom is tapeweed on sand, and the holding is good if a suitable anchor is used.

Another anchorage exists on the north-eastern side of the island, with protection from the west and south.

Shore access is easy onto the sandy beach from both anchorages.



Spilsby Island

