

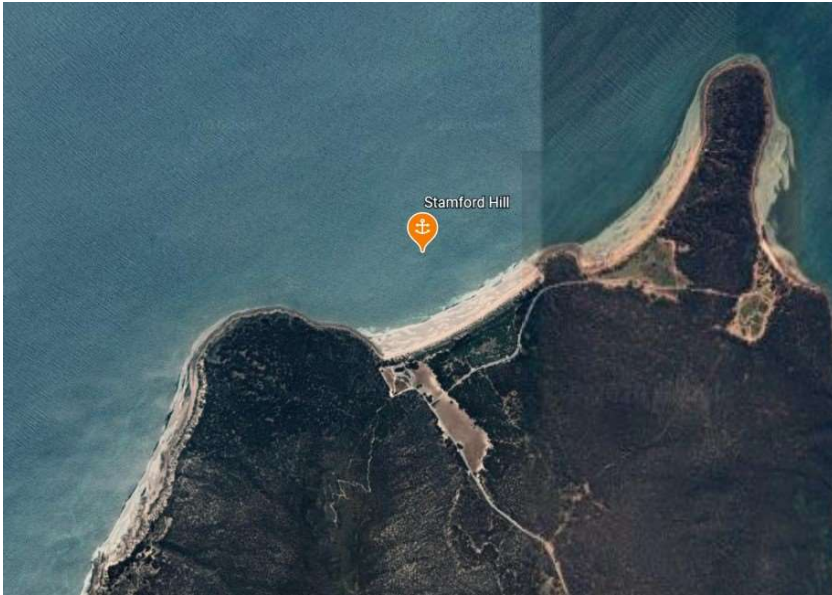
Stamford Hill

Indicative Anchoring Position

34° 45.9'S 135° 56.4'E

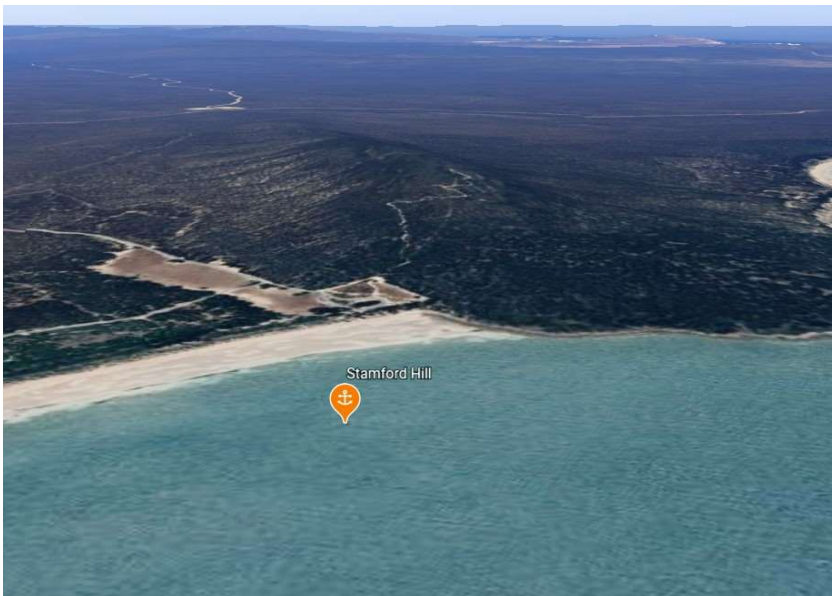
Shelter from E – S

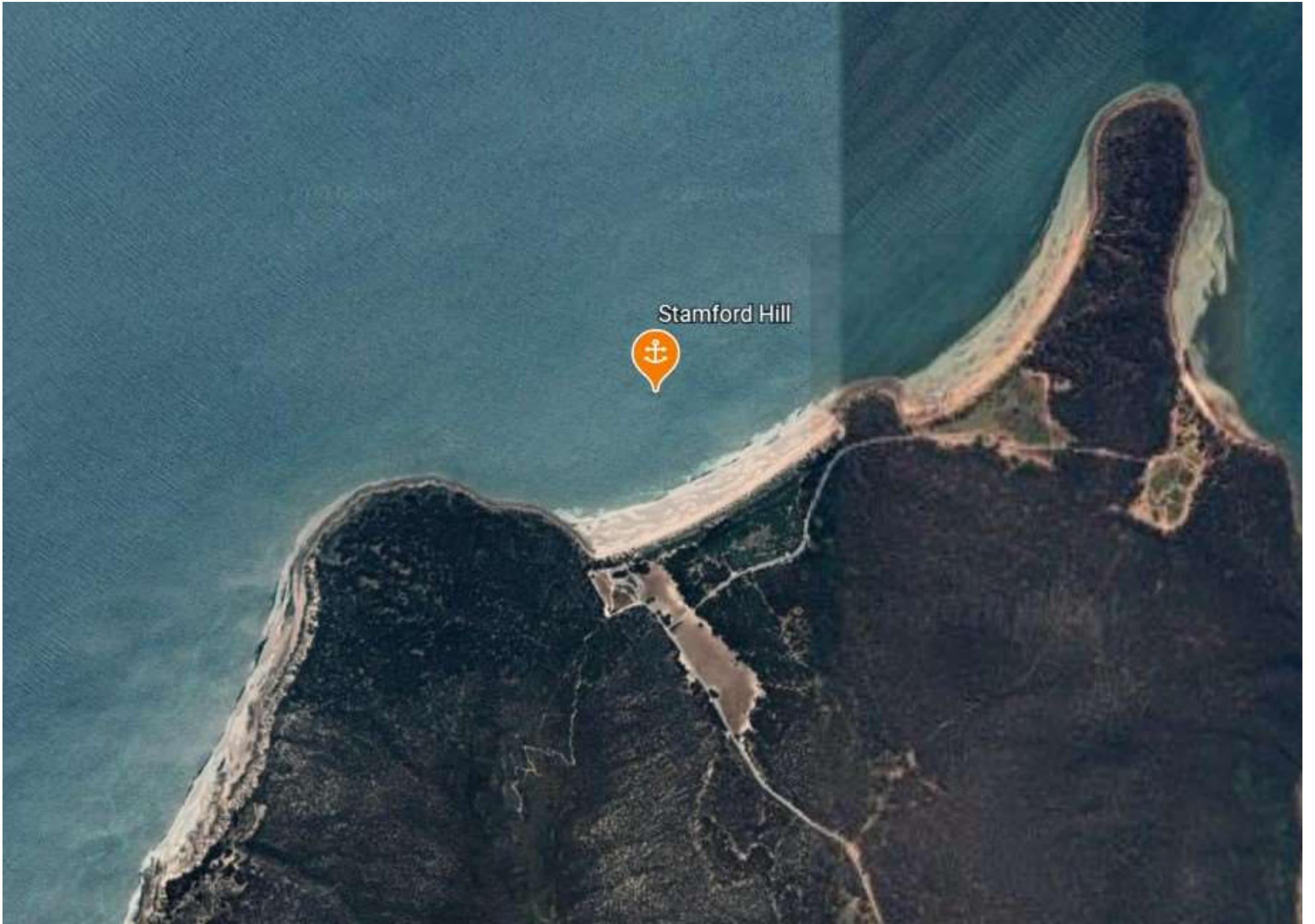
Note. Indicative anchoring positions are for reference only and should not be used as waypoints. The best position for anchoring depends on many factors including vessel draft, tide, and forecast wind.



This anchorage is included because of the excellent walking trail to the Flinders Monument on the top of Stamford Hill. An easy beach landing gives access to a visitors' display, and is the starting point for the hill climb plus other more ambitious walks.

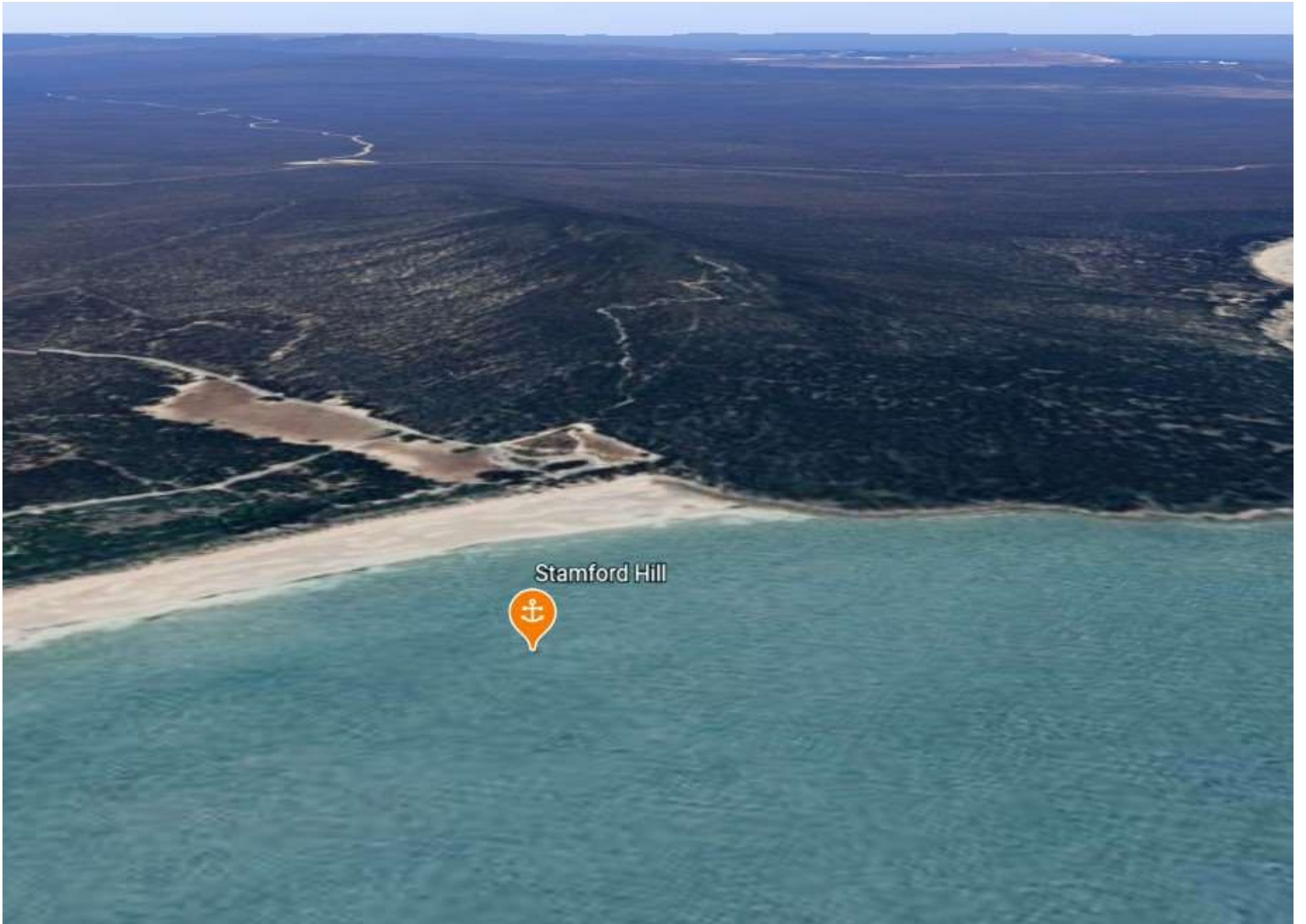
There are information displays at various points on the way, and the view from the top is excellent.





Stamford Hill





Stamford Hill

