

## Wardang Island

### Indicative Anchoring Position

34° 27.9'S 137° 22.7'E

Shelter from SE – S - W

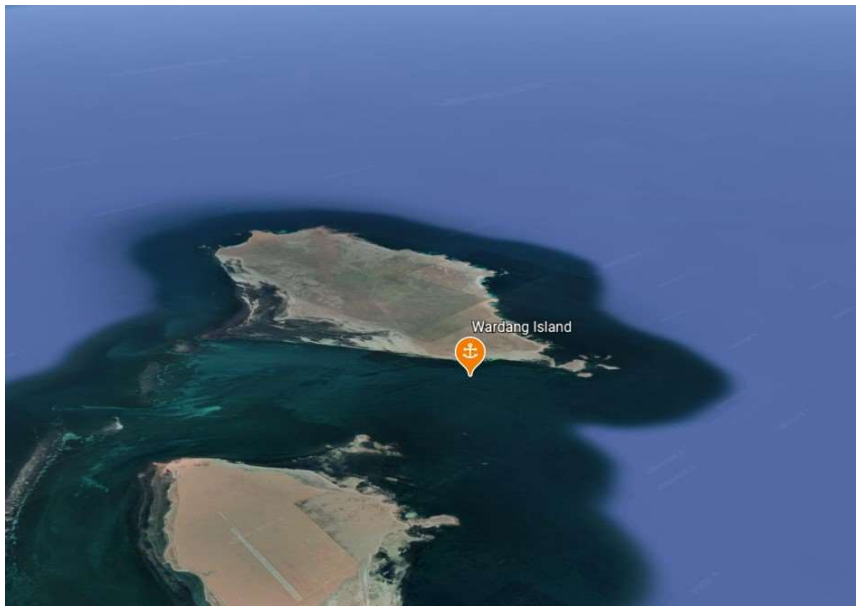
*Note.* Indicative anchoring positions are for reference only and should not be used as waypoints. The best position for anchoring depends on many factors including vessel draft, tide, and forecast wind.



Wardang Island is a large island about five miles west of the town of Port Victoria on Yorke Peninsula. Although many anchoring locations can be found in this general area, the suggested anchorage is on the north-eastern tip of the island, north of the shoals and near the much smaller Goose Island.

It can be accessed easily from the north, or with some care from the south via a marked channel with sufficient depth for most keelboats.

The holding is good on sand with patchy weed. There is no real beach in this area and the shore line is rocky, so shore access is difficult.



Wardang Island





Wardang Island

