

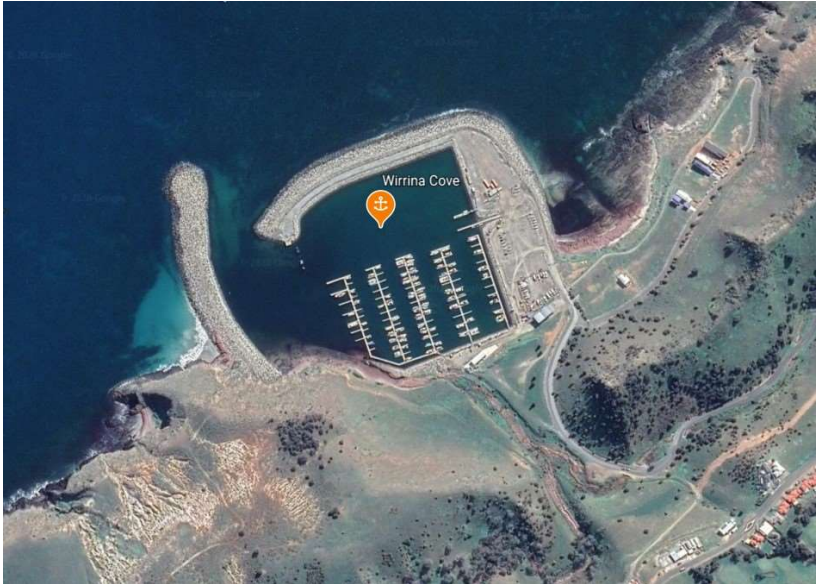
## Wirrina Cove

### Marina Entrance

35° 30.0'S 138° 14.35'E

## Shelter from All Directions

*Note. The marina entrance position is for reference only and should not be used as a waypoint.*

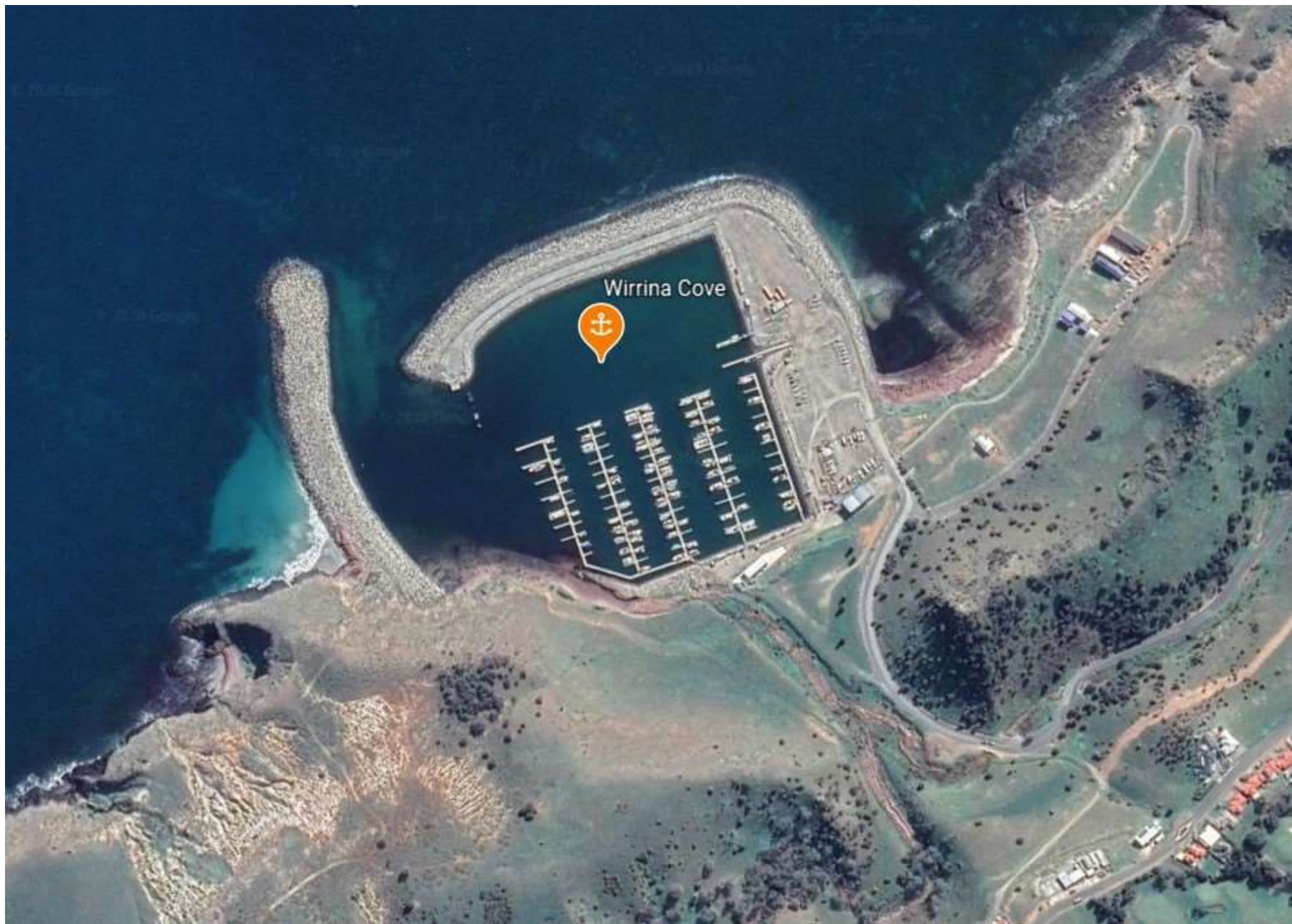


Wirrina Cove is an all weather harbour and marina. It is a private development which has a very troubled financial history. At the time of writing (September 2020), the manager of the marina is involved in a long-running legal dispute with berth owners and the SA government, so it is not possible to give meaningful contact information.

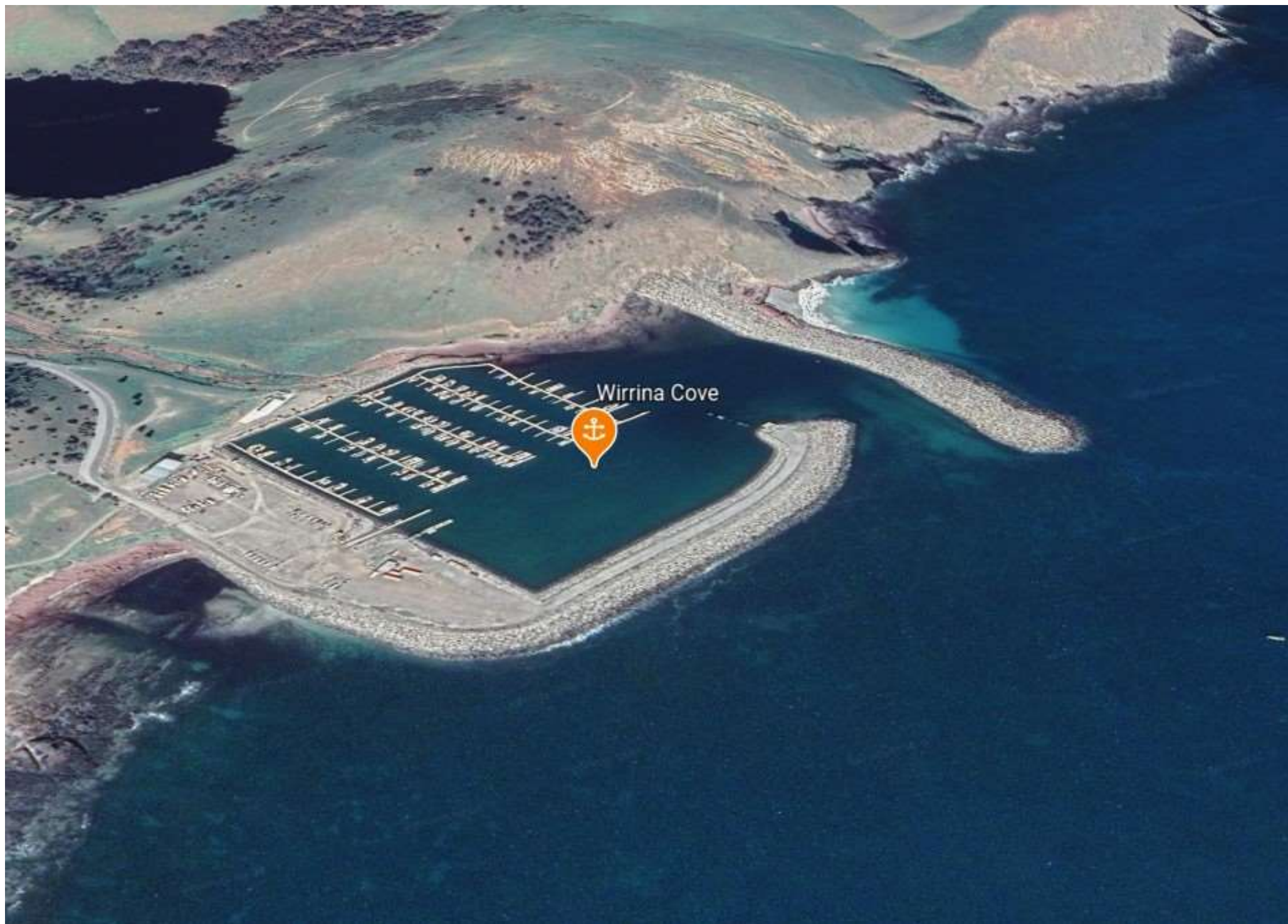
The facilities and land based infrastructure are basic, and this location is best thought of as a secure place to spend the night when there is some doubt about the suitability of much nicer anchorages nearby, namely Second Valley and Rapid Bay.











Wirrina Cove

