

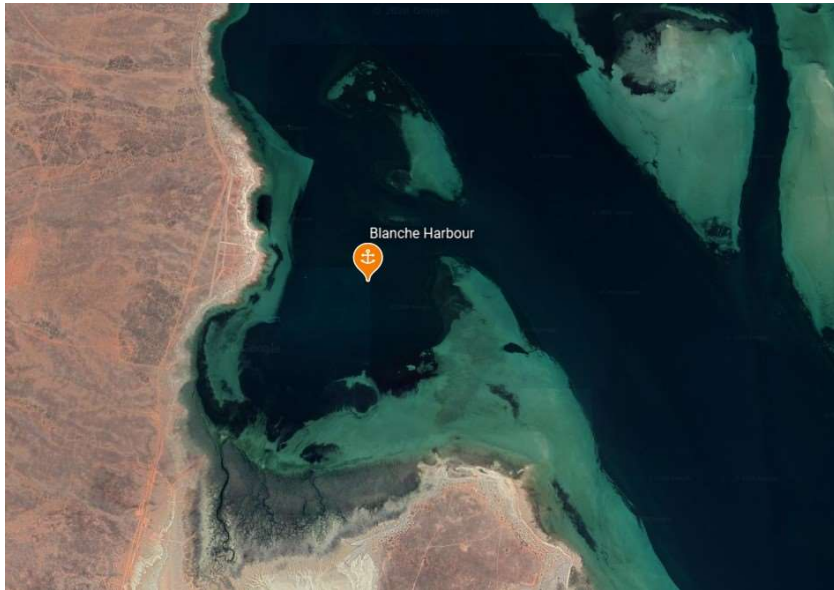
Blanche Harbour

Indicative Anchoring Position

32° 41.8'S 137° 46.0'E

Shelter from SE – SW – NW

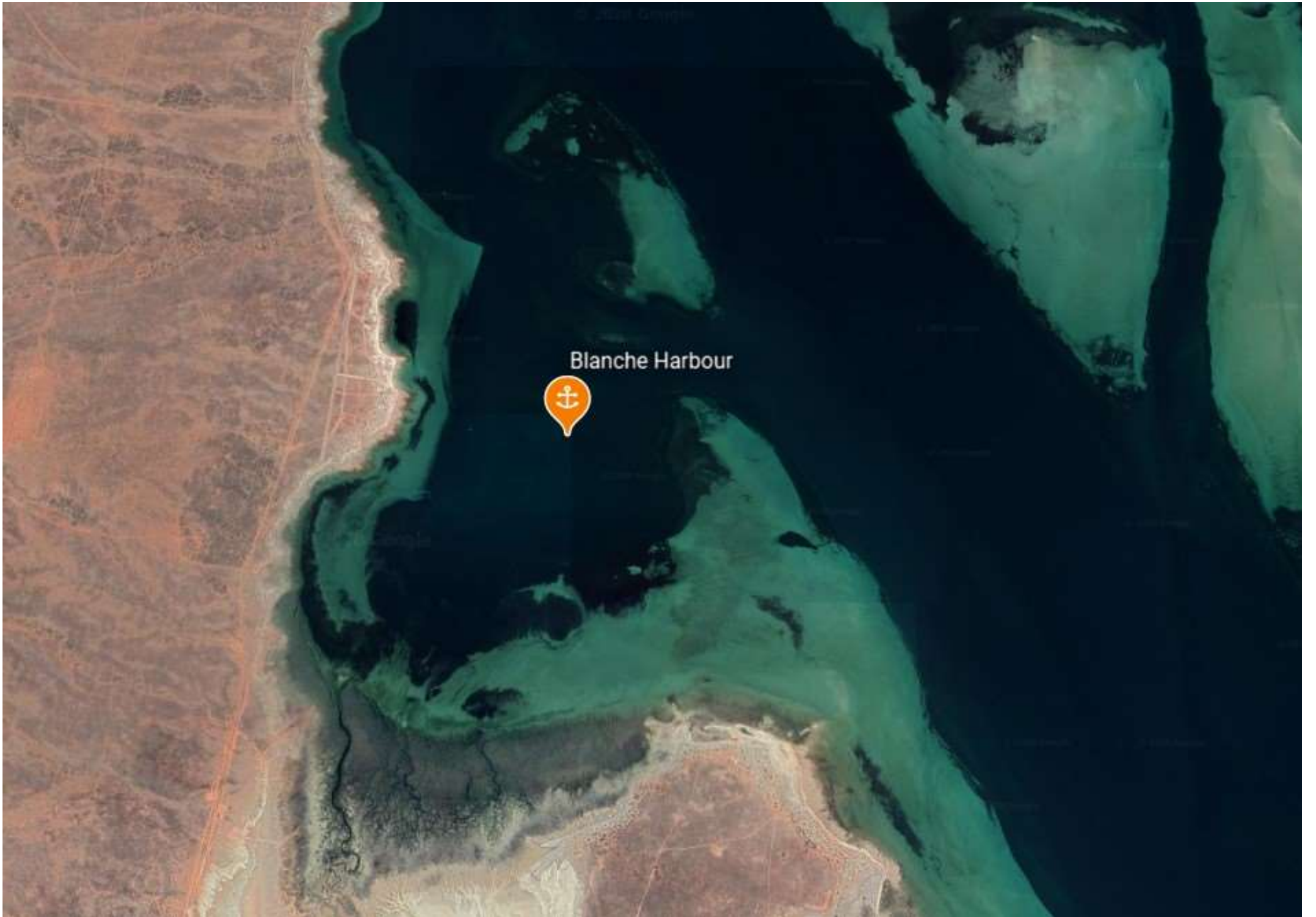
Note. Indicative anchoring positions are for reference only and should not be used as waypoints. The best position for anchoring depends on many factors including vessel draft, tide, and forecast wind.



Blanche Harbour is a large natural bay on the western side of the channel. It is a more conventional anchorage than some others in this area – it has a sandy fringing beach instead of mangroves, and a sizeable community of holiday houses along the shore.

The bottom is soft and the holding is only fair. Shore access is possible in the right wind, but it is very exposed to the prevailing summer breezes.







Yatala Harbour



Blanche Harbour

