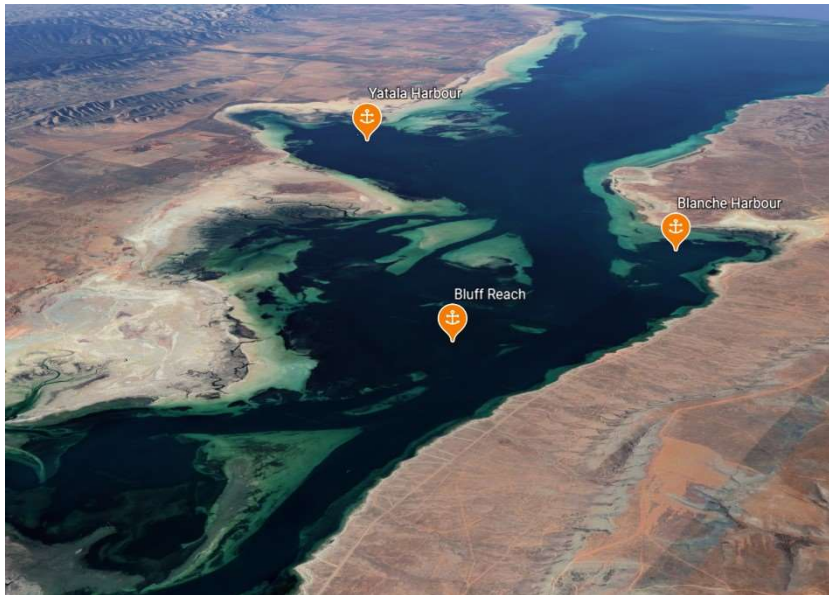
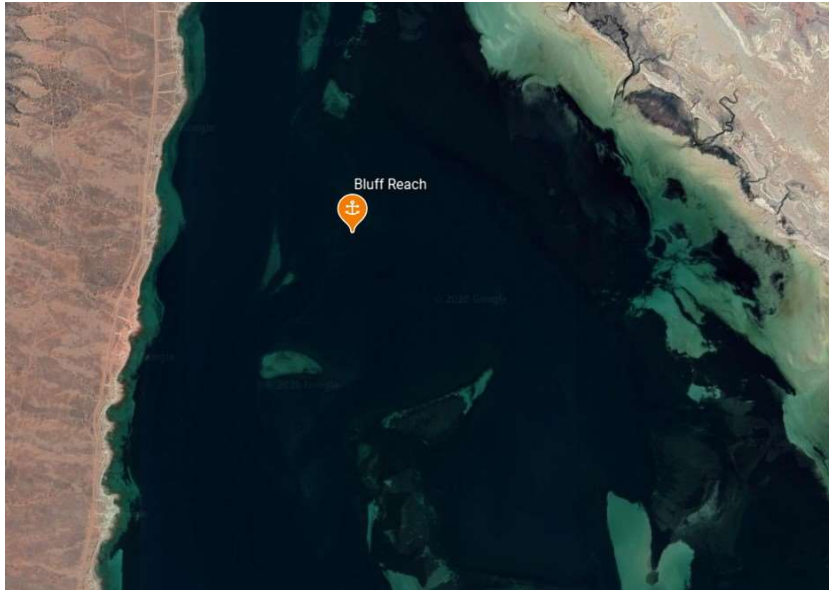


Bluff Reach

Indicative Anchoring Position

32° 38.5'S 137° 47.1'E



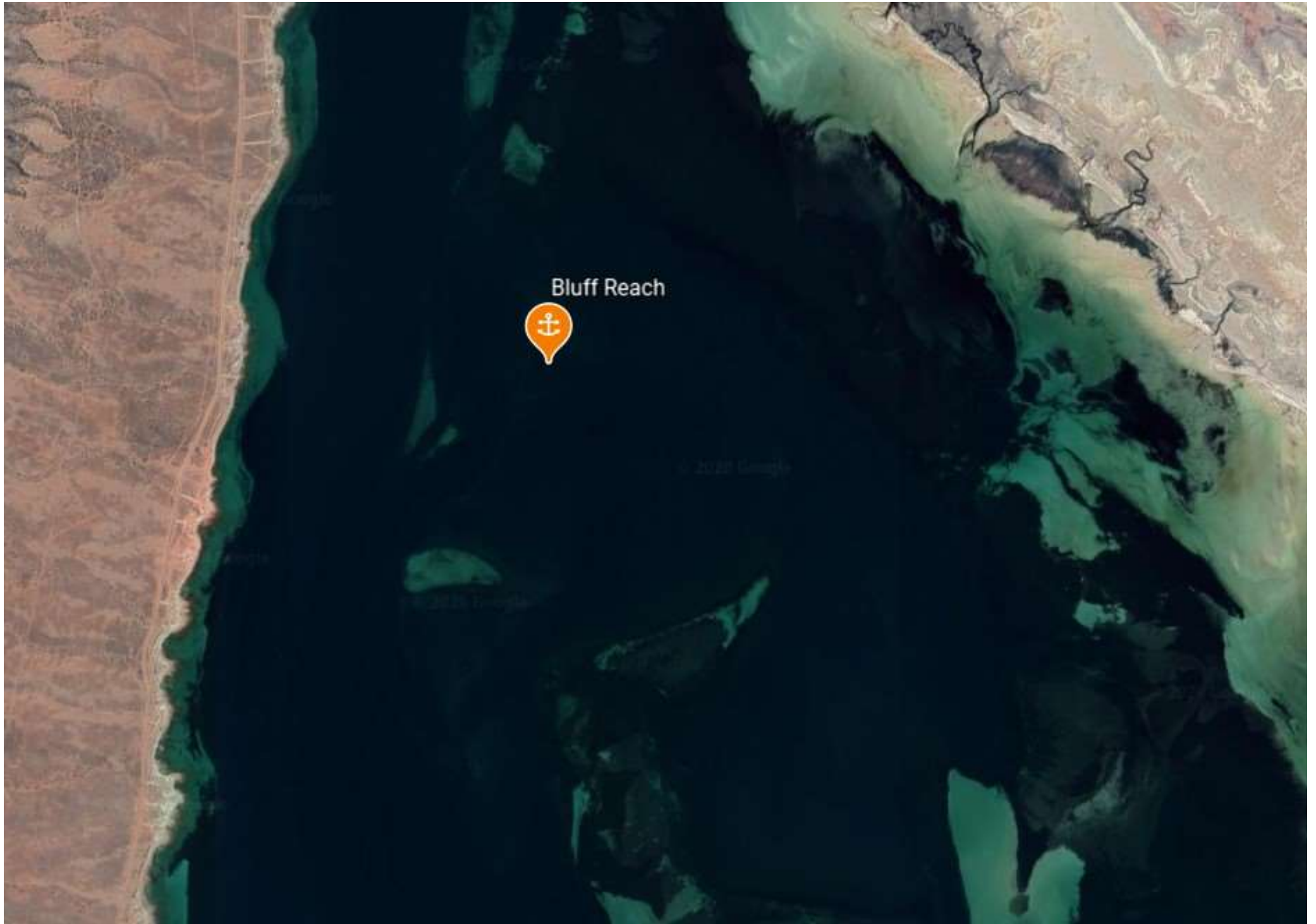
Shelter from All Directions

Note. Indicative anchoring positions are for reference only and should not be used as waypoints. The best position for anchoring depends on many factors including vessel draft, tide, and forecast wind.

Bluff Reach is an unlikely looking anchorage which is nowhere near the shore on either side. It is well outside the marked channel and has plenty of depth if approached from the northern end. Careful navigation is needed in this area. Although the shelter is reasonably good from all directions, it is rather exposed to the prevailing summer breezes.

The bottom is mud and the holding good.

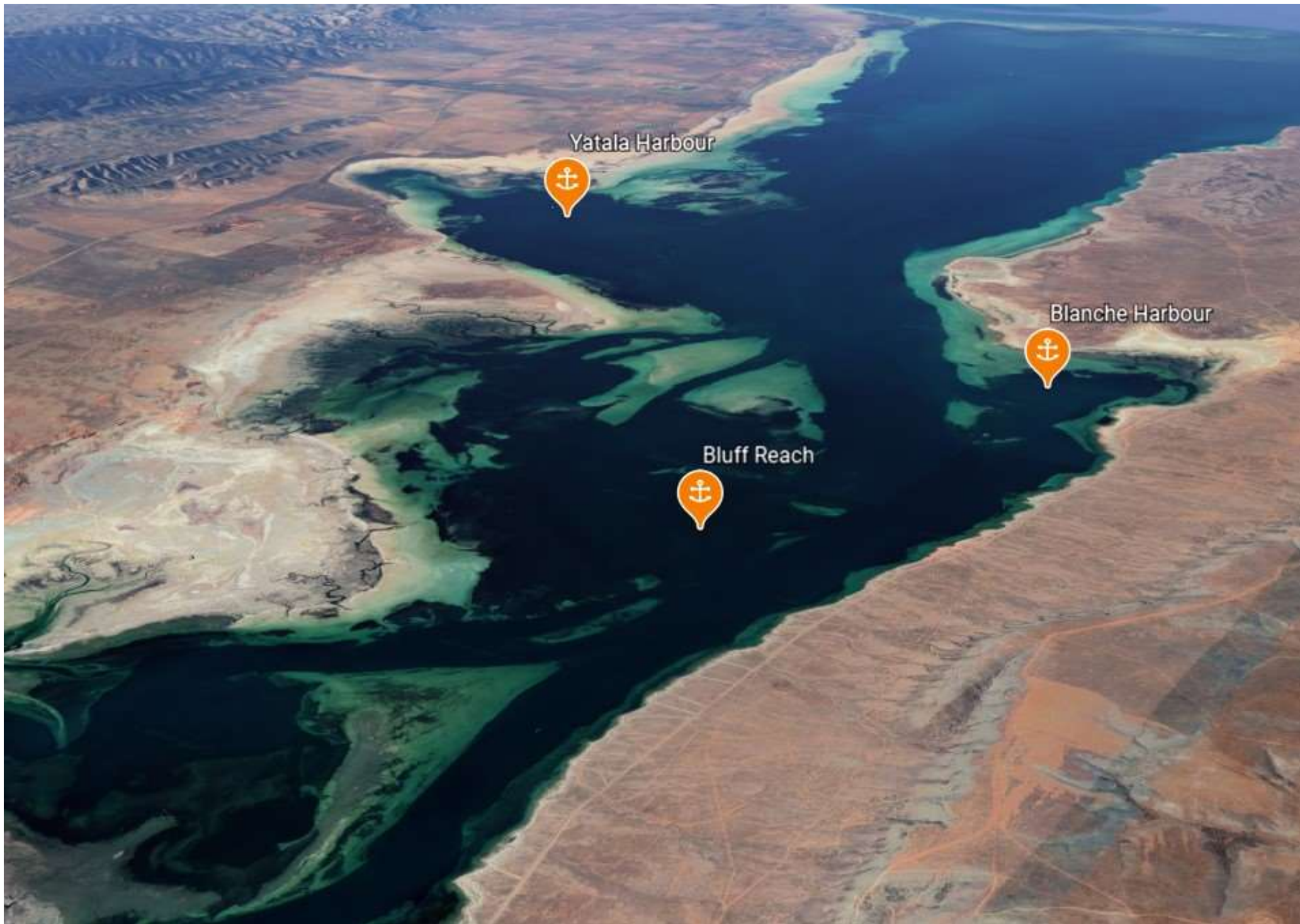
Mangrove flats on the eastern shore means that access is not possible. The western shore has holiday shacks scattered along it but very little beach, and while access is possible, it is a very long dinghy ride.



Bluff Reach



© 2020 Google



Yatala Harbour



Blanche Harbour



Bluff Reach

