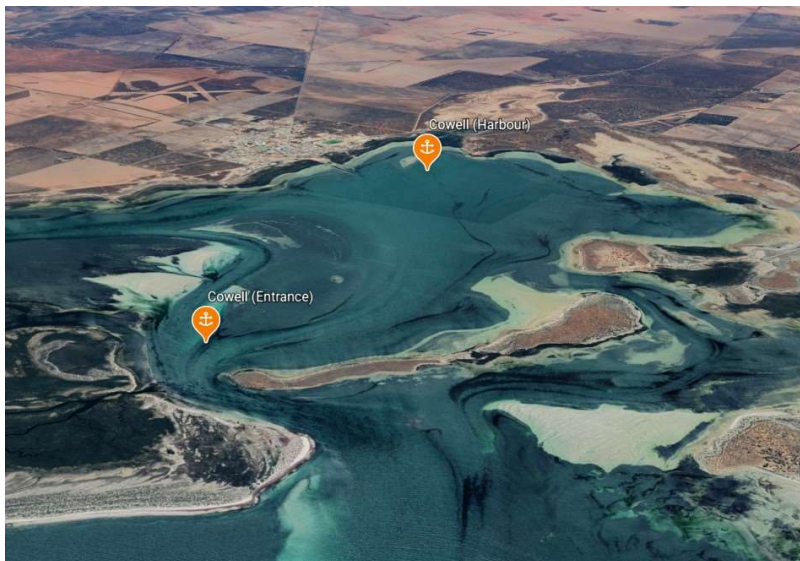
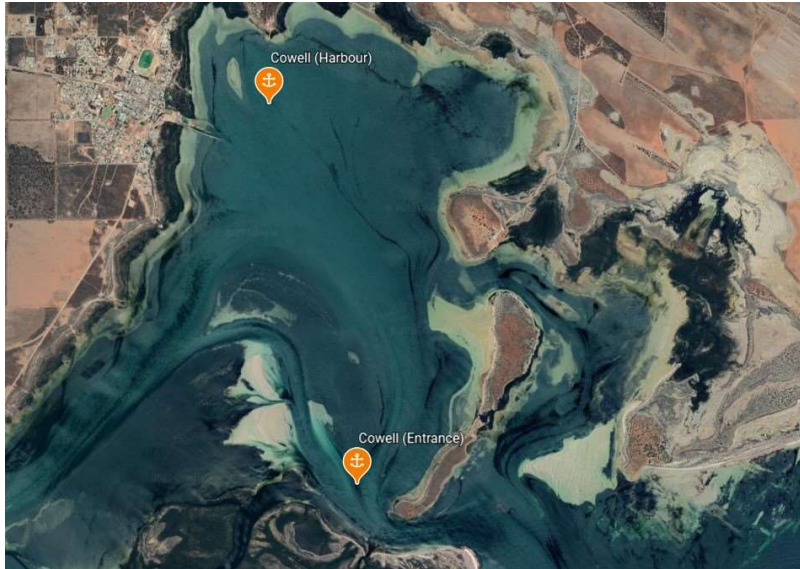


Cowell (Franklin Harbour)

Indicative Anchoring Positions

33° 43.6'S 136° 57.0'E (Entrance)

33° 40.8'S 136° 56.3'E (Harbour)



Shelter from All Directions

Note. Indicative anchoring positions are for reference only and should not be used as waypoints. The best position for anchoring depends on many factors including vessel draft, tide, and forecast wind.

Cowell is a small regional town located at the head of a complex inlet system known as Franklin Harbour. Various anchoring positions are possible, and the two most useful shown here – one near the entrance and the other in the harbour near the town.

Mangrove flats comprise most of the coastline within the inlet, and much of the area is too shallow for keelboats. The entrance to the inlet and the access channel to the township are well marked with fixed beacons, and it is essential to follow these closely to avoid running aground. The shelter is excellent within the inlet, and the holding is good.

The recommended anchorage near the entrance is good for an overnight stop, as it is not far from the sea but well clear of the marked channel. Shore access is not possible here.

The anchorage near the township is about 3 miles further in, and allows dinghy access to the launching ramp for walks ashore.

Cowell (Harbour)



Cowell (Entrance)



