

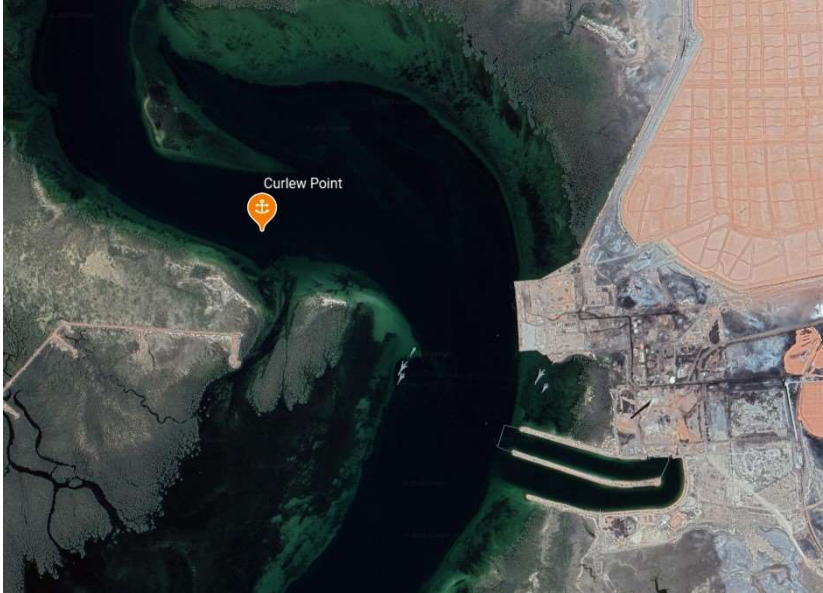
Curlew Point

Indicative Anchoring Position

32° 32.1'S 137° 46.1'E

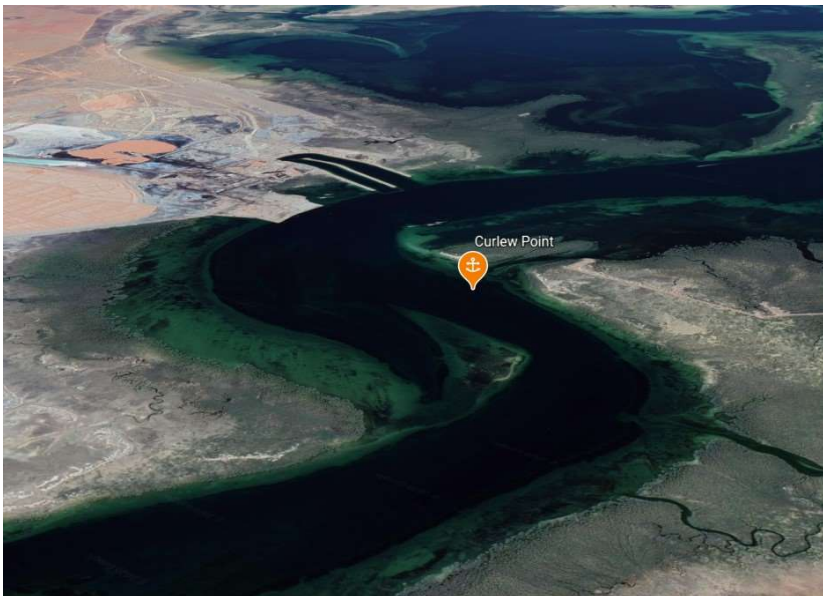
Shelter from All Directions

Note. Indicative anchoring positions are for reference only and should not be used as waypoints. The best position for anchoring depends on many factors including vessel draft, tide, and forecast wind.

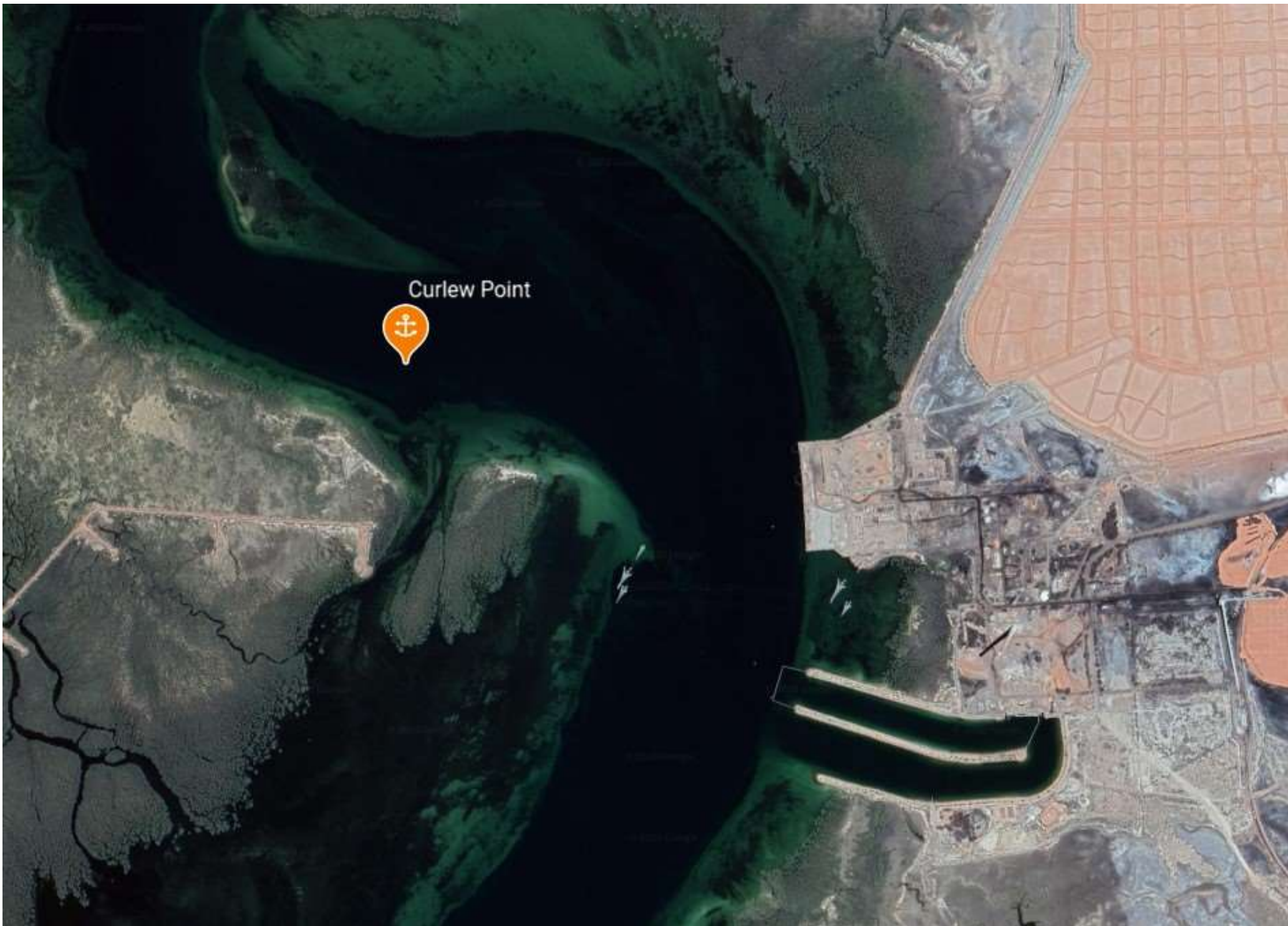


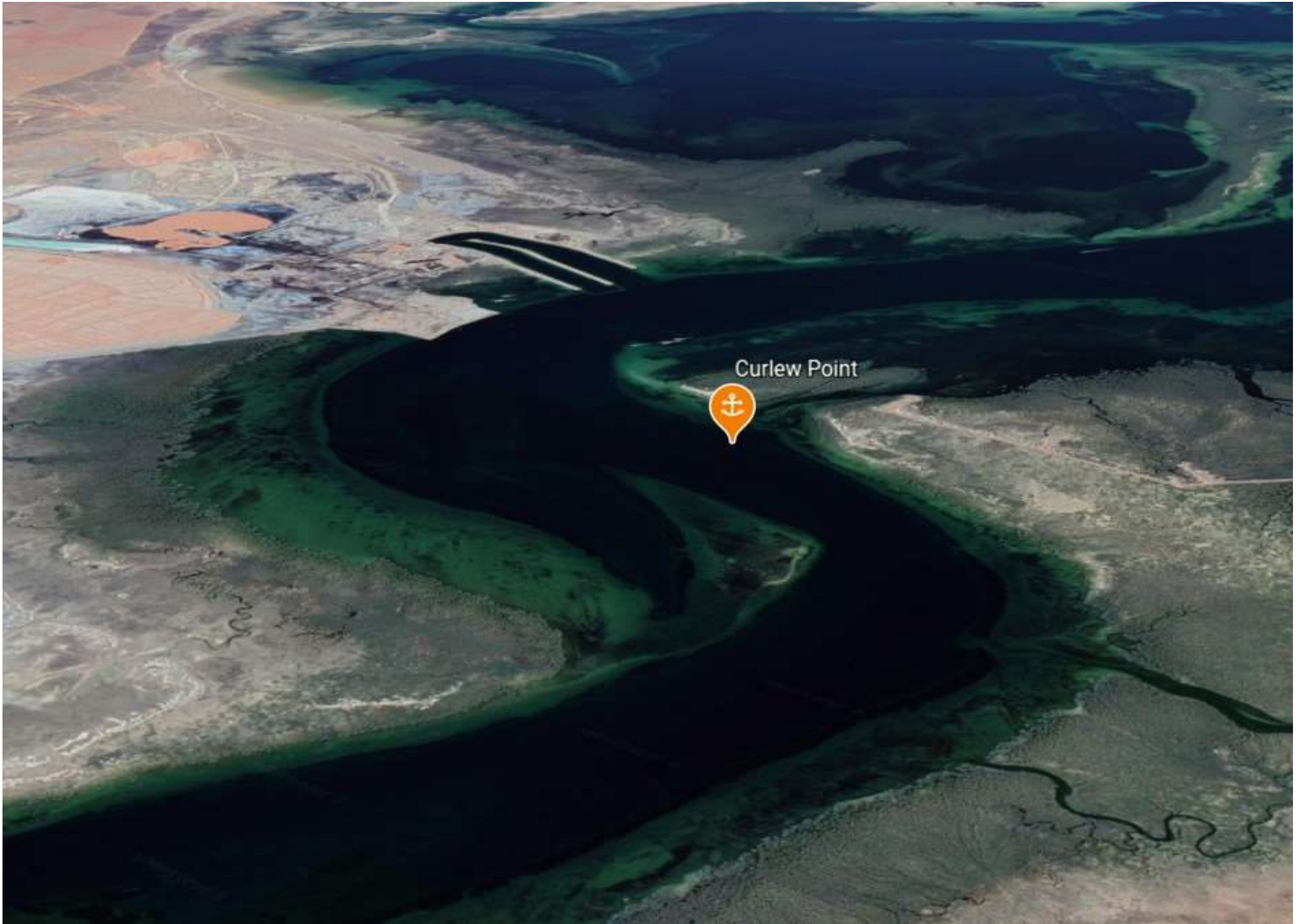
Curlew Point is an interesting anchorage located about 3 miles south of Port Augusta, and close to the site of the old Playford Power Station (now demolished) which is on the opposite bank. It is a mud anchorage with mangroves on the nearby shore.

The holding is good, but the strong tidal flow creates some interesting wind-against-tide effects. Shore access is not possible.



Curlew Point





Curlew Point

