

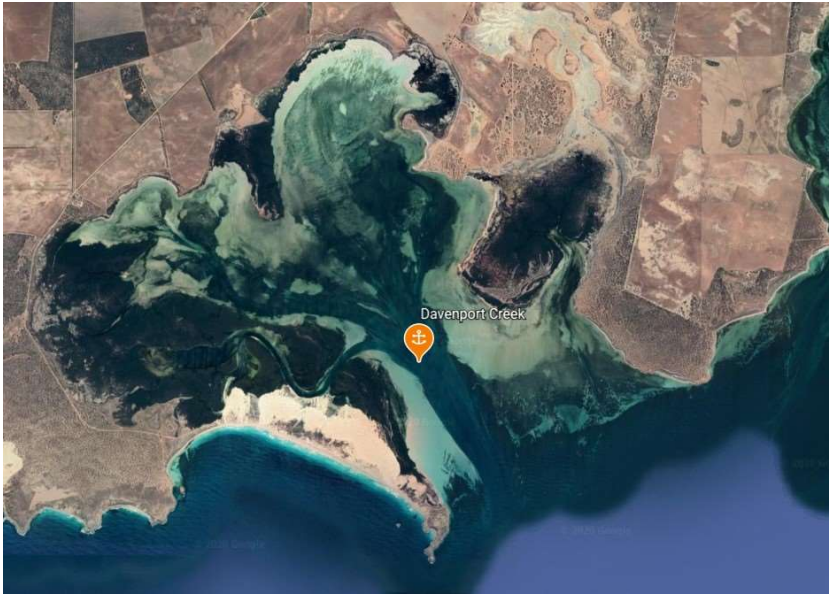
## Davenport Creek

### Indicative Anchoring Position

32° 09.9'S 133° 29.1'E

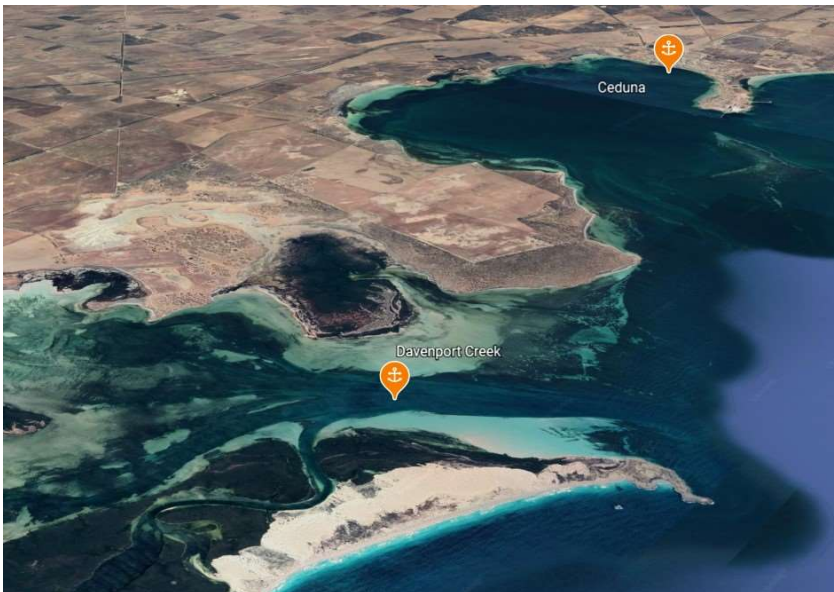
## Shelter from All Directions

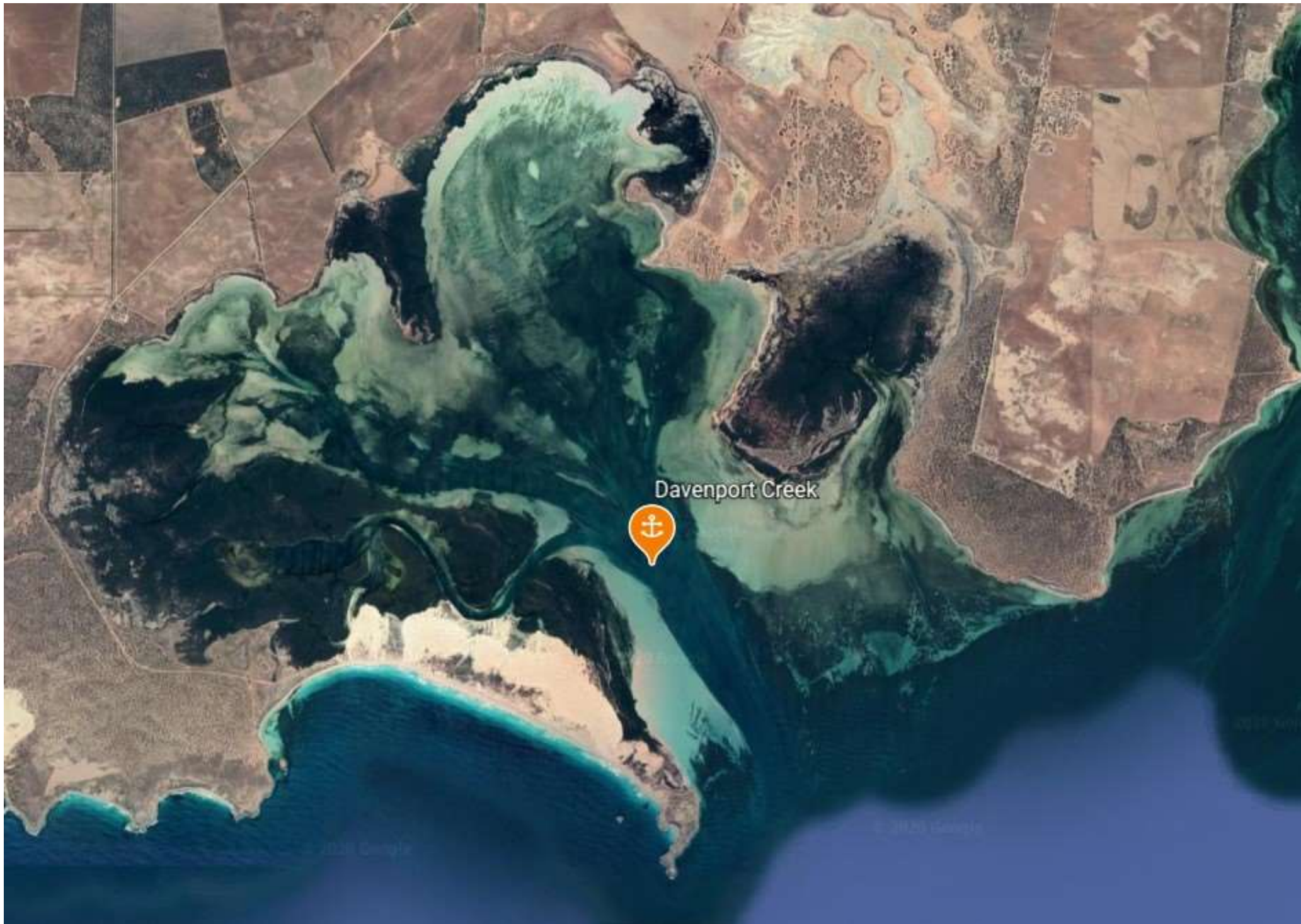
*Note.* Indicative anchoring positions are for reference only and should not be used as waypoints. The best position for anchoring depends on many factors including vessel draft, tide, and forecast wind.



Davenport Creek is a large and shallow inlet at the western end of Denial Bay about 8 miles southwest of Ceduna. The upper reaches have insufficient depth for keel boats, but the lower reaches are navigable, and this anchorage provides excellent all round protection in most weather conditions. The bottom is sand and the holding good. Shore access is possible, as is dinghy exploration of the upper reaches.

Mosquitoes are plentiful (and hungry) here, so insect repellent and nets for the hatches and companionway should be carried.



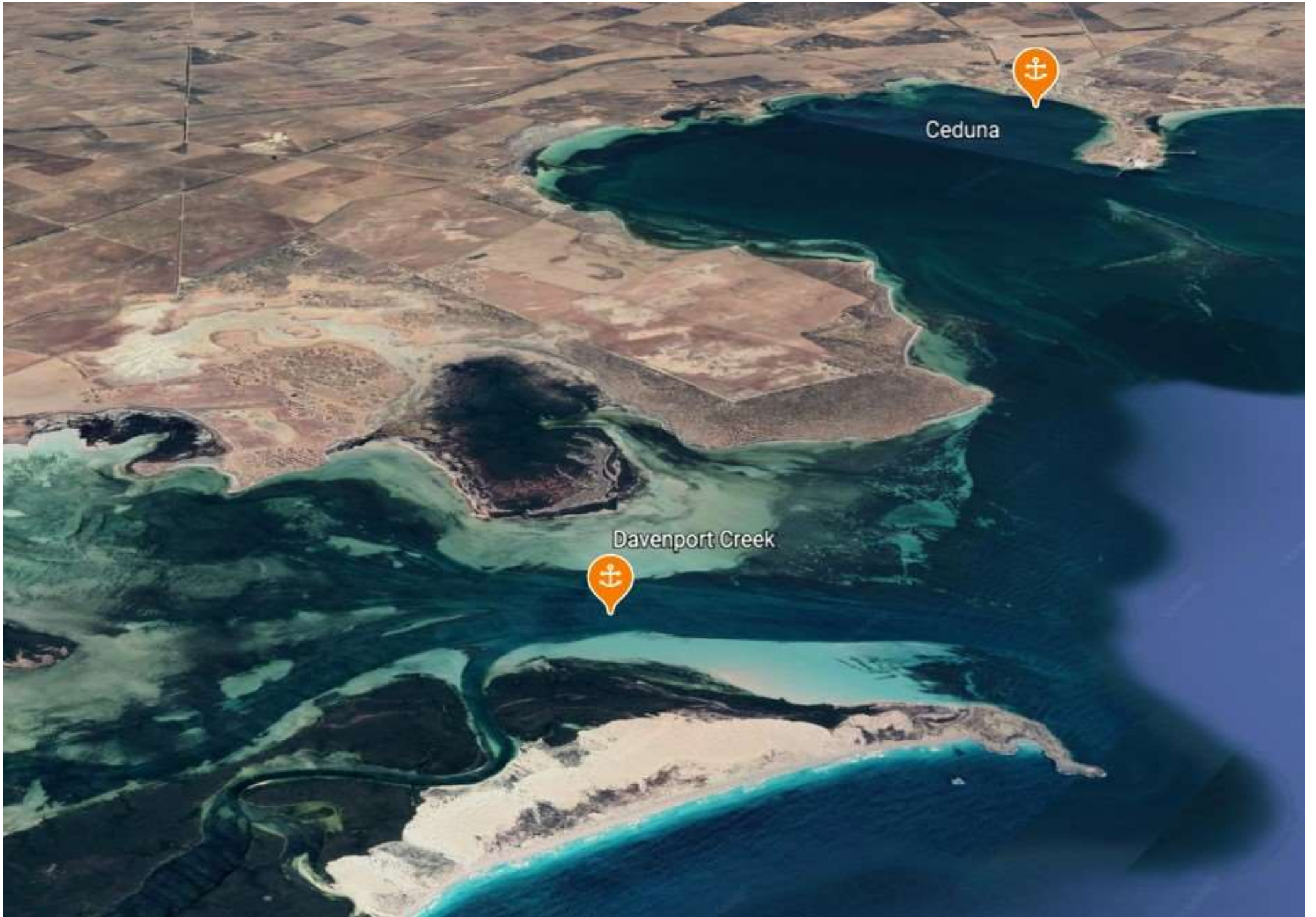


Davenport Creek



© 2020 Google

© 2020 Google



Ceduna

Davenport Creek