

## Northern Spencer Gulf East Coast



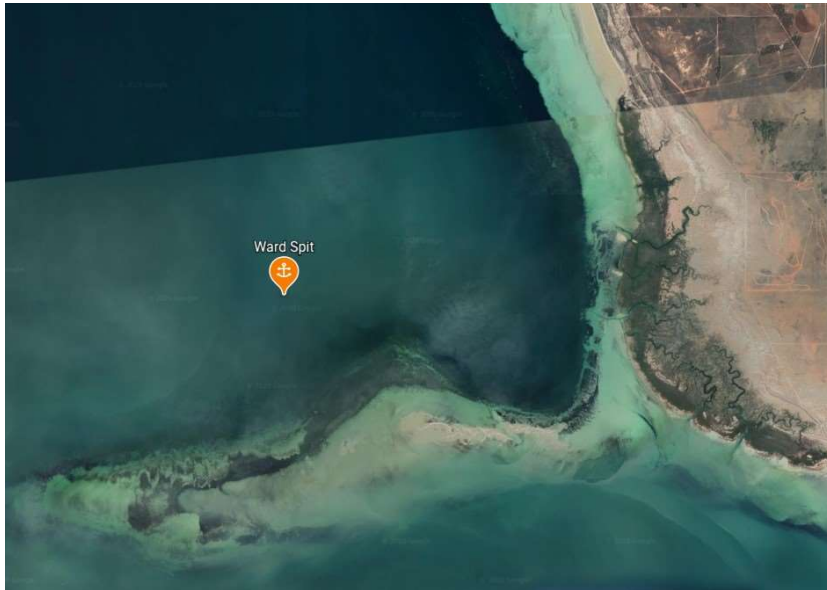
## Ward Spit

### Indicative Anchoring Position

32° 59.9'S 137° 55.7'E

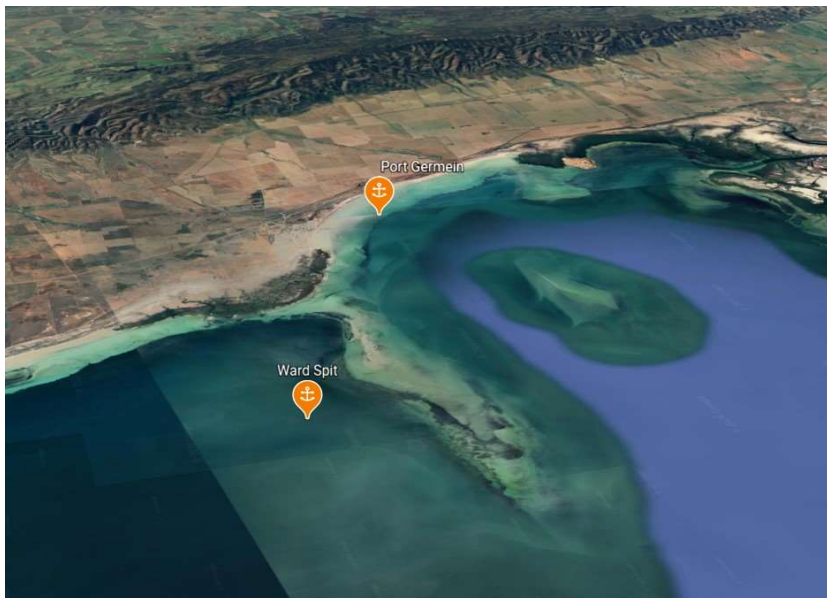
Shelter from NE – E – SW

*Note.* Indicative anchoring positions are for reference only and should not be used as waypoints. The best position for anchoring depends on many factors including vessel draft, tide, and forecast wind.



Ward Spit is a fully submerged sand spit that protrudes about 5 miles west from the eastern shore at the entrance to the upper reaches of the Gulf. It provides excellent shelter, particularly at the suggested location in the eastern corner.

The bottom is sand and the holding good. The shore consists mainly of mangrove flats, and access is not possible.





Ward Spit







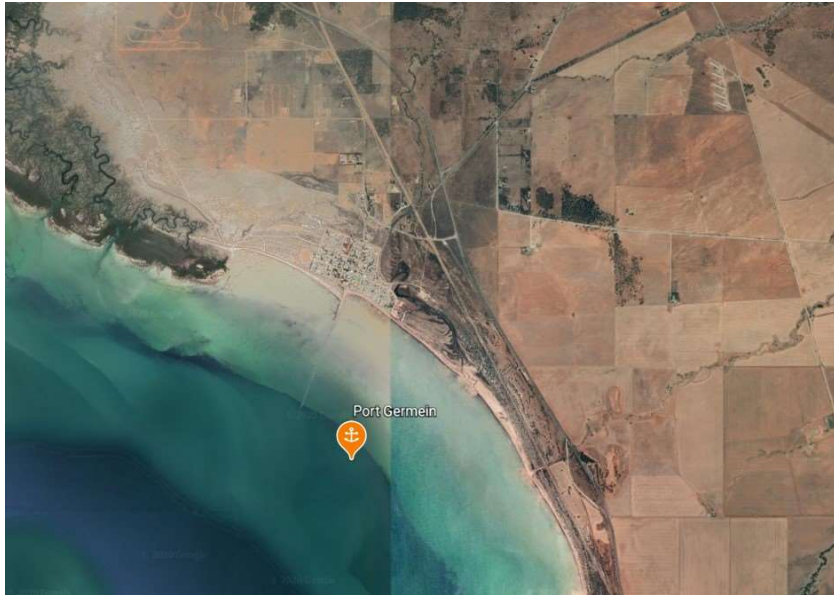
## Port Germein

### Indicative Anchoring Position

33° 02.4'S 137° 59.0'E

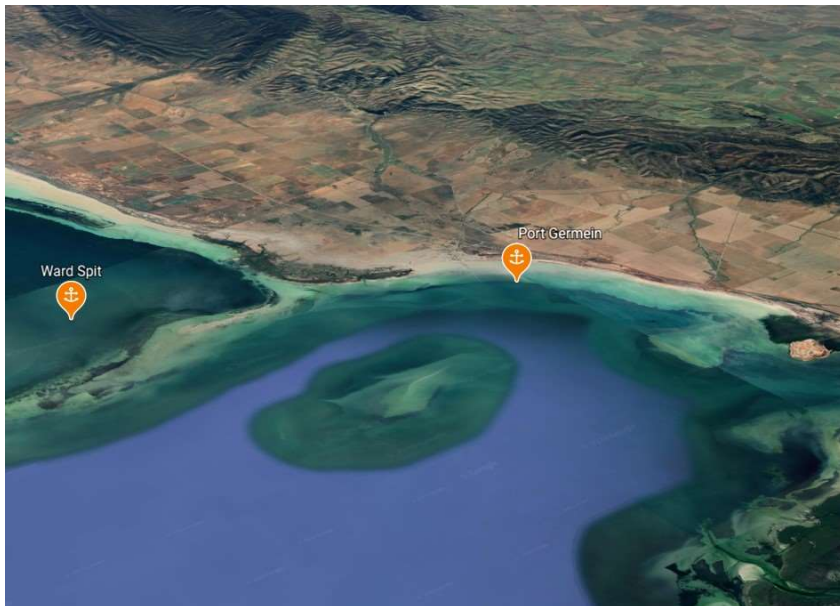
Shelter from NW – NE

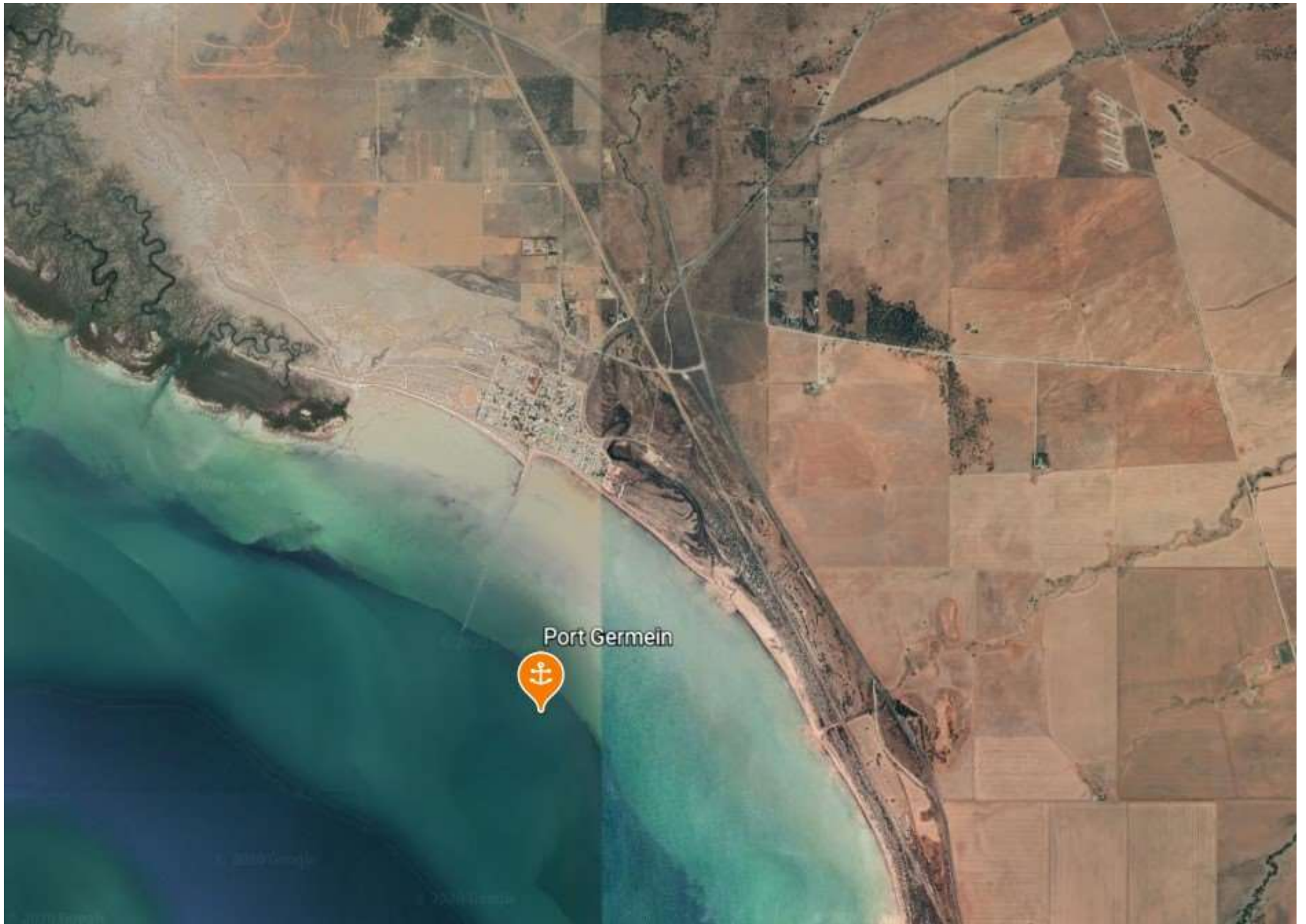
*Note.* Indicative anchoring positions are for reference only and should not be used as waypoints. The best position for anchoring depends on many factors including vessel draft, tide, and forecast wind.



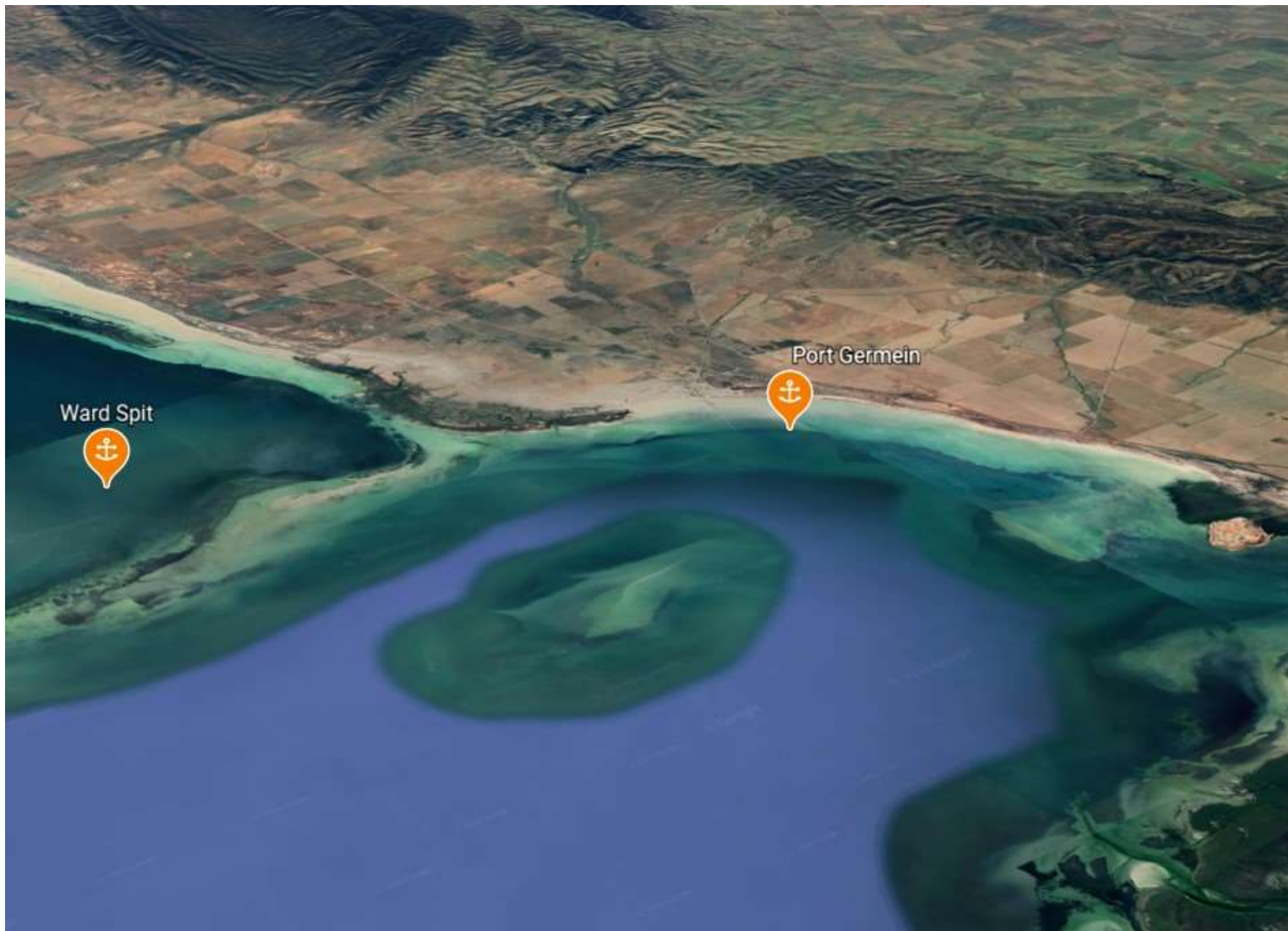
Port Germein is at the north-eastern part of Germein Bay. It was once an important shipping port for grain, and still has an extremely long jetty extending across the very large tidal flat. The suggested anchoring point is just west of the jetty, but anchoring is possible wherever the wind and depth are suitable.

The very wide tidal flat makes shore access difficult unless the jetty is used.









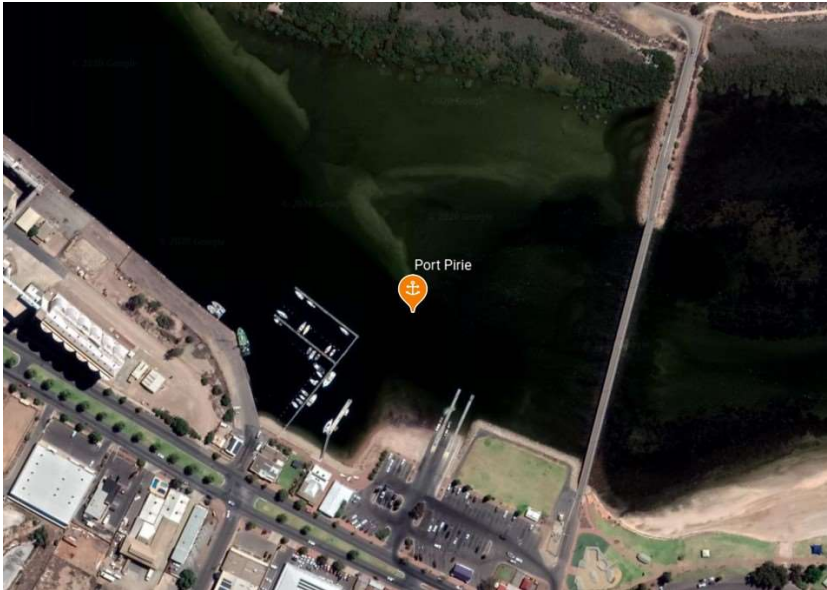
## Port Pirie

### Marina Area Position

33° 10.8'S 138° 00.95'E

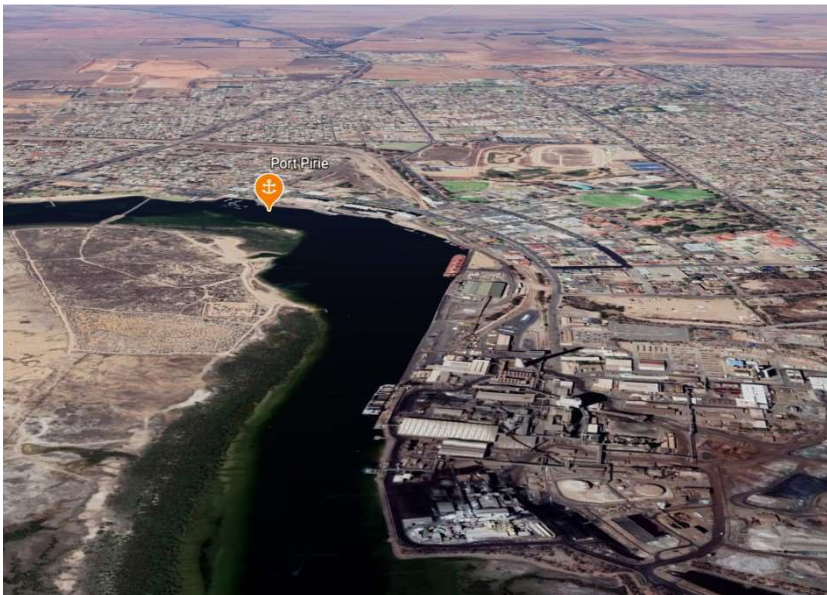
## Shelter from All Directions

*Note. Indicative anchoring positions are for reference only and should not be used as waypoints. The best position for anchoring depends on many factors including vessel draft, tide, and forecast wind.*

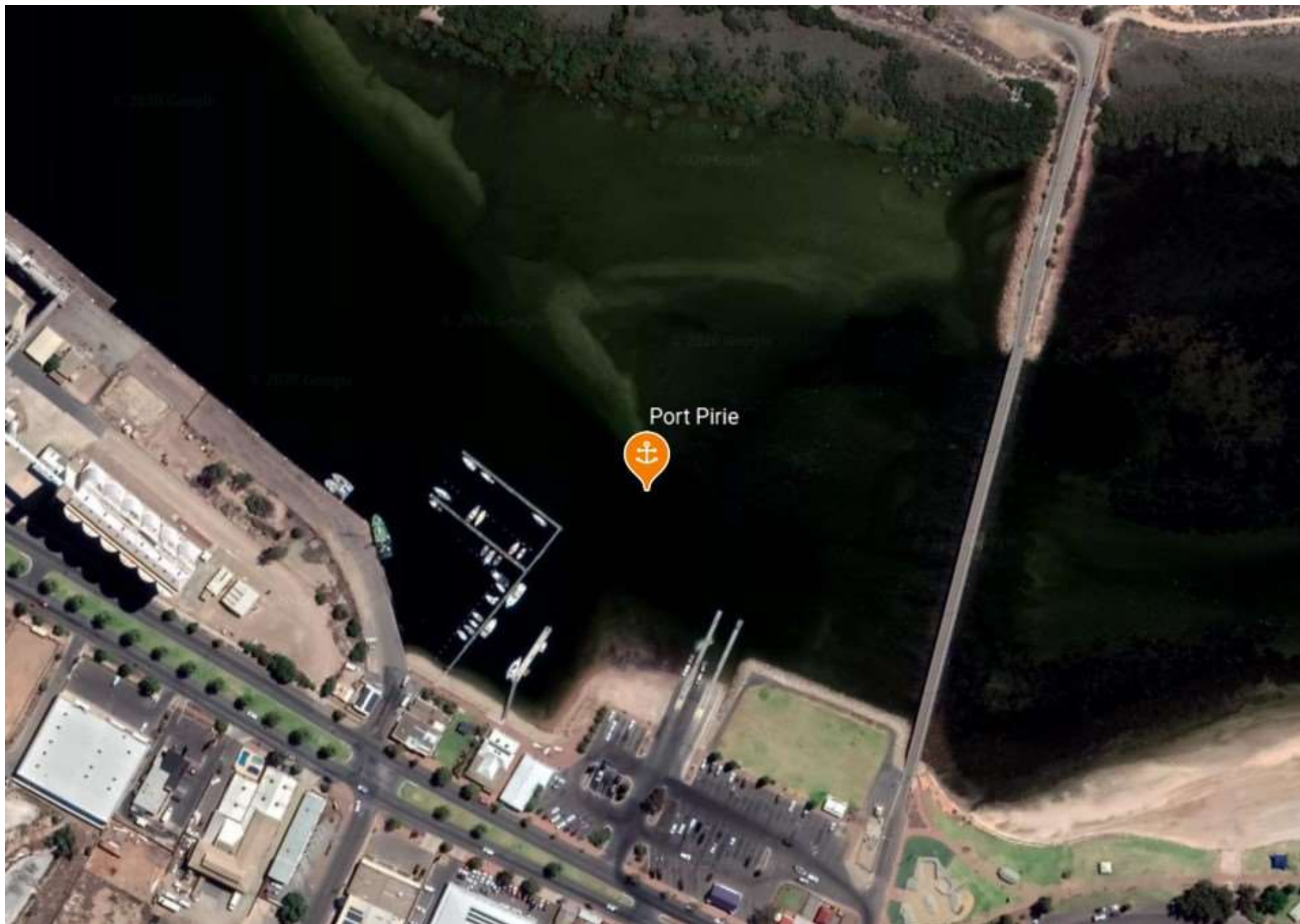


Port Pirie is a very large regional town dominated by the tall refinery chimney which is visible for many miles to sea. It is a commercial shipping port, and has a well-marked dredged channel leading past the town and wharf area to a small boat harbour and marina. The council-owned public marina is a single floating finger which can be seen on the Google Earth image between the L-shaped jetty to the left and the boat ramp to the right. It can accommodate 2 or 3 boats on each side, and is for short term stays only. There is no charge for using the marina, but it should be noted that water and power are not available.

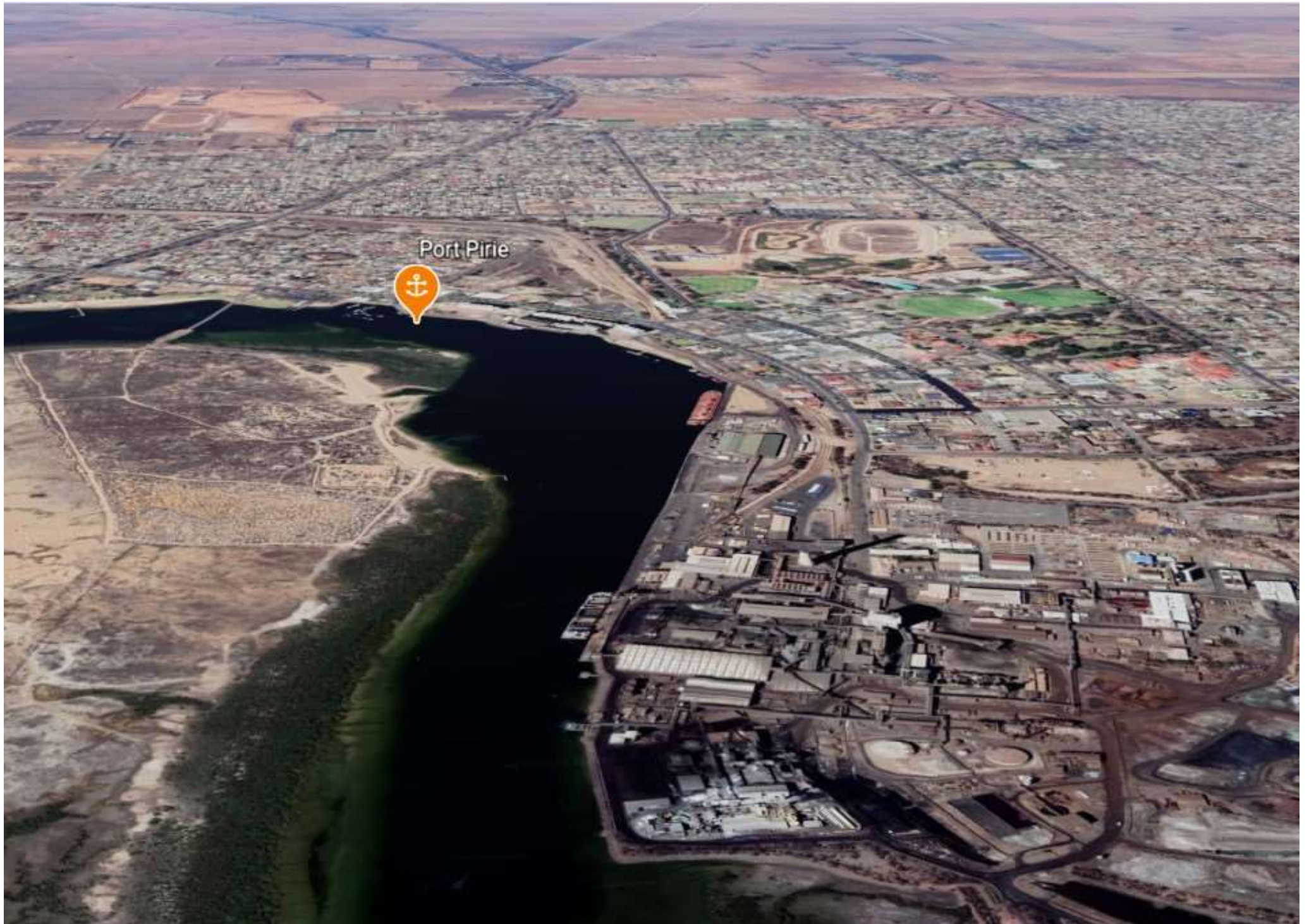
The Royal Port Pirie Yacht Club is in the building at the top of the walkway from the marina, and visiting boats can obtain a key to enable access to the Club's toilets and showers. Mains water can be obtained (by arrangement) from the L-shaped jetty adjacent to the marina. There is no fuel berth, and fuel must be obtained from local service stations about 500 metres away.













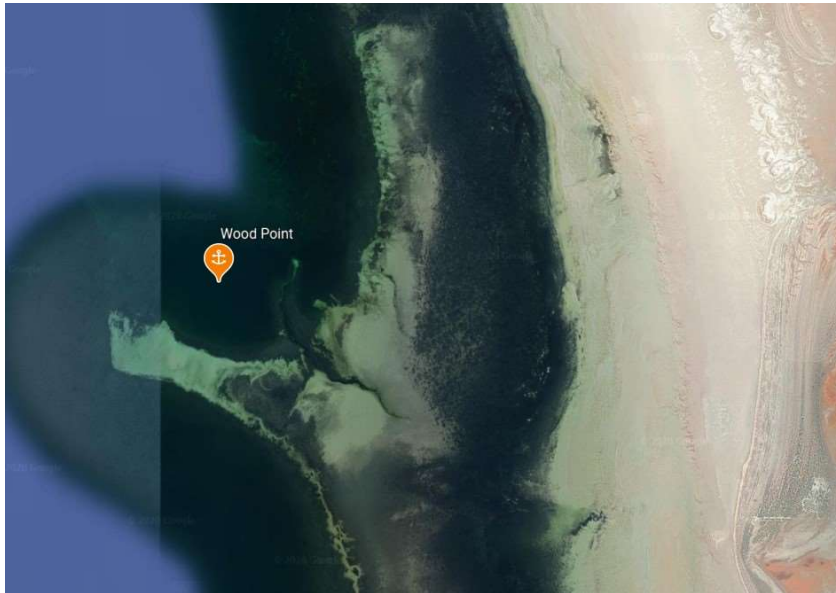
## Wood Point

### Indicative Anchoring Position

33° 21.6'S 137° 48.4'E

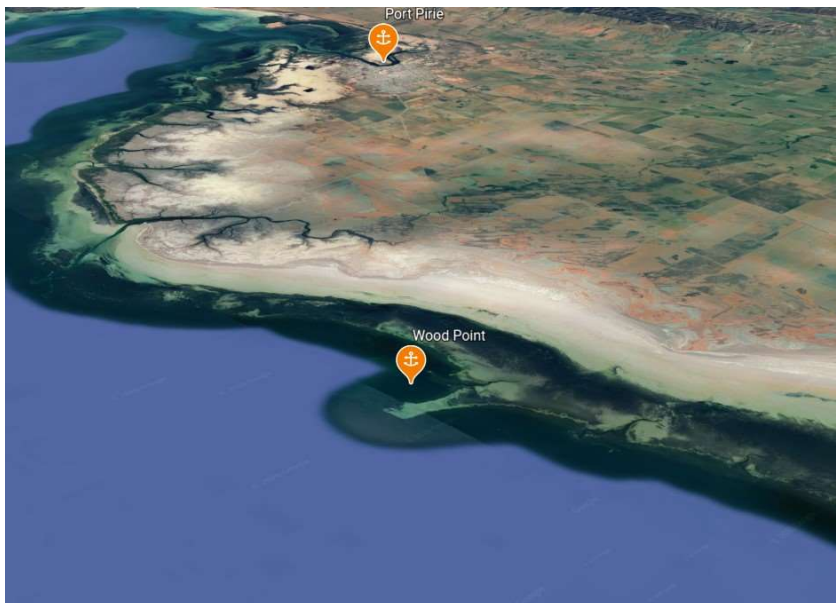
Shelter from SE – S – SW

Note. Indicative anchoring positions are for reference only and should not be used as waypoints. The best position for anchoring depends on many factors including vessel draft, tide, and forecast wind.



This anchorage is behind a submerged sand spit which extends about 3 miles west of Wood Point. This provides excellent protection from the sea, but not of course from the wind. Nevertheless it provides a surprisingly comfortable place to overnight in the right conditions. Charted depth contours are reported to be inaccurate in this area, so vessels should monitor depth carefully when approaching.

The bottom is sand and the holding good. The shore is very distant and comprised of muddy mangrove flats, so access is not possible.



Wood Point





