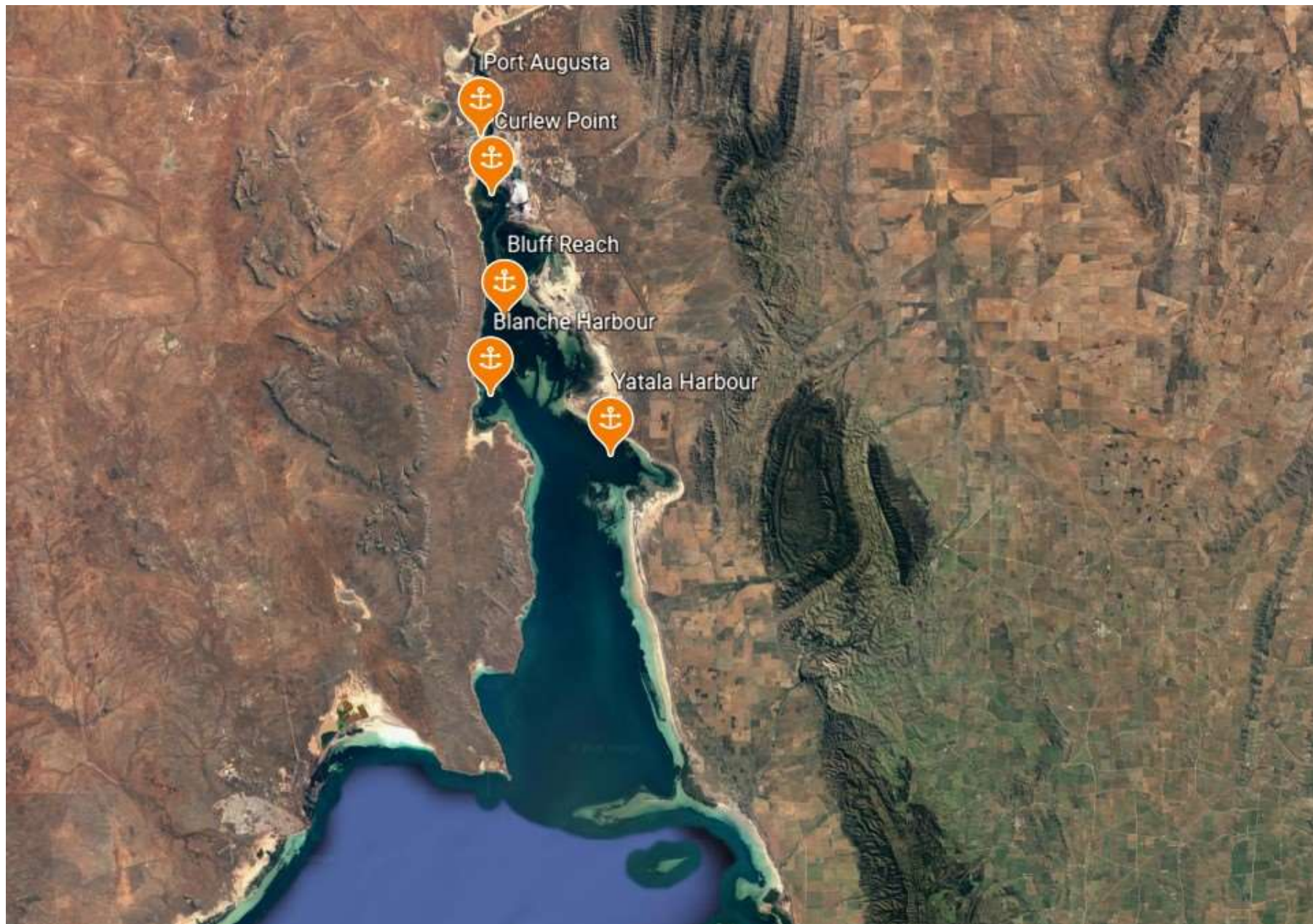


## Northern Spencer Gulf Upper Reaches





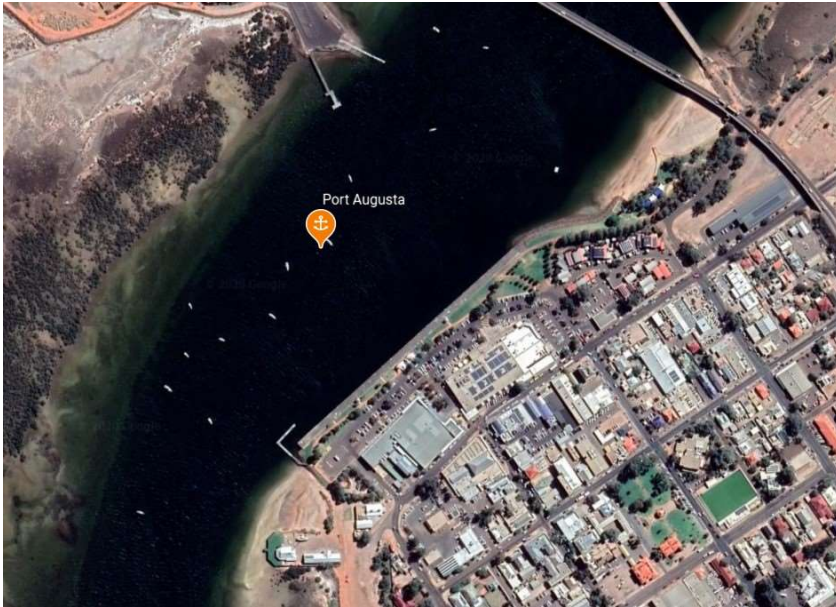
## Port Augusta

### Floating Pontoon

32° 29.4'S 137° 45.5'E

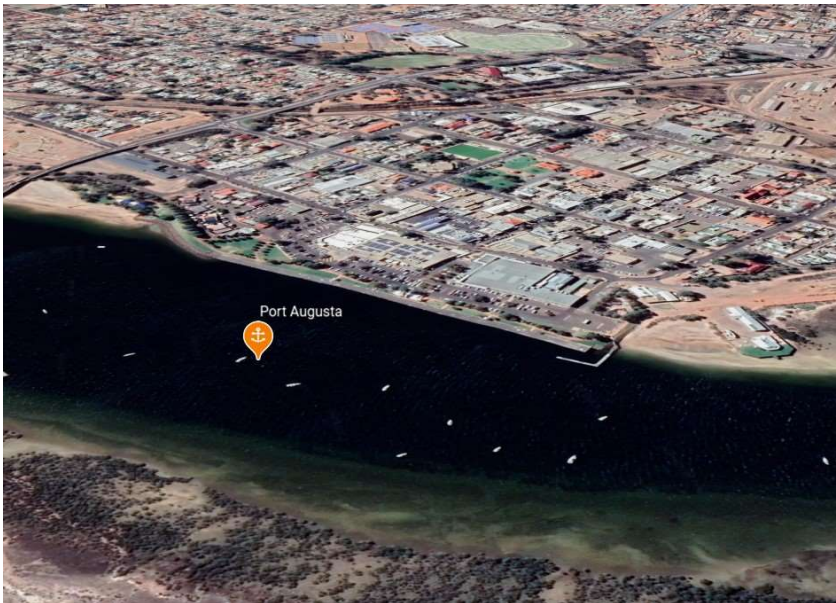
## Shelter from All Directions

Note. The floating pontoon position is for reference only and should not be used as a waypoint.

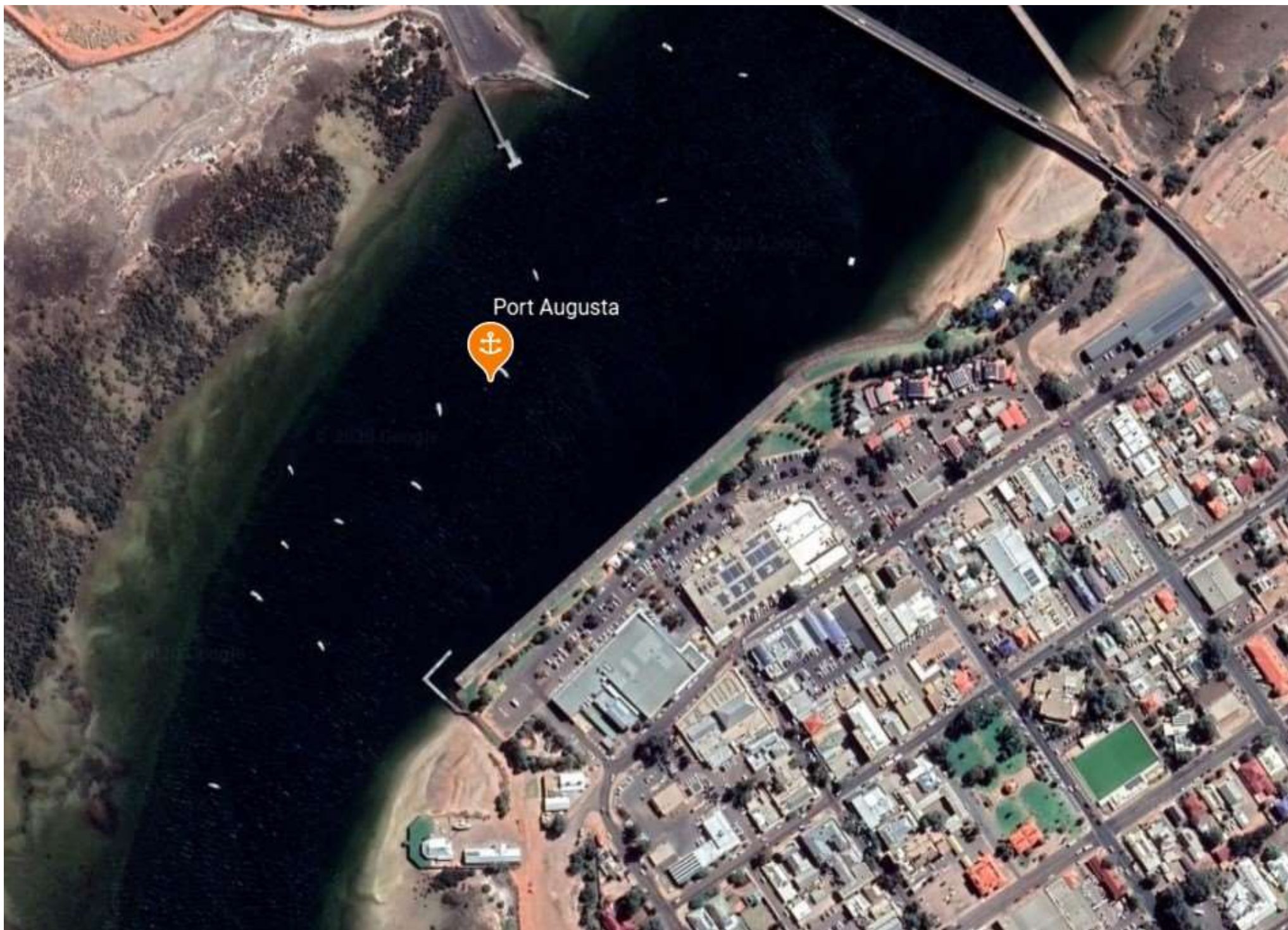


Port Augusta is the northernmost point of Spencer Gulf which is navigable, and the Gulf is really just a wide channel in this area. There is a mooring ground here which always presents the danger of a snagged anchor, but yachts can use the floating pontoon attached to the southern bank.

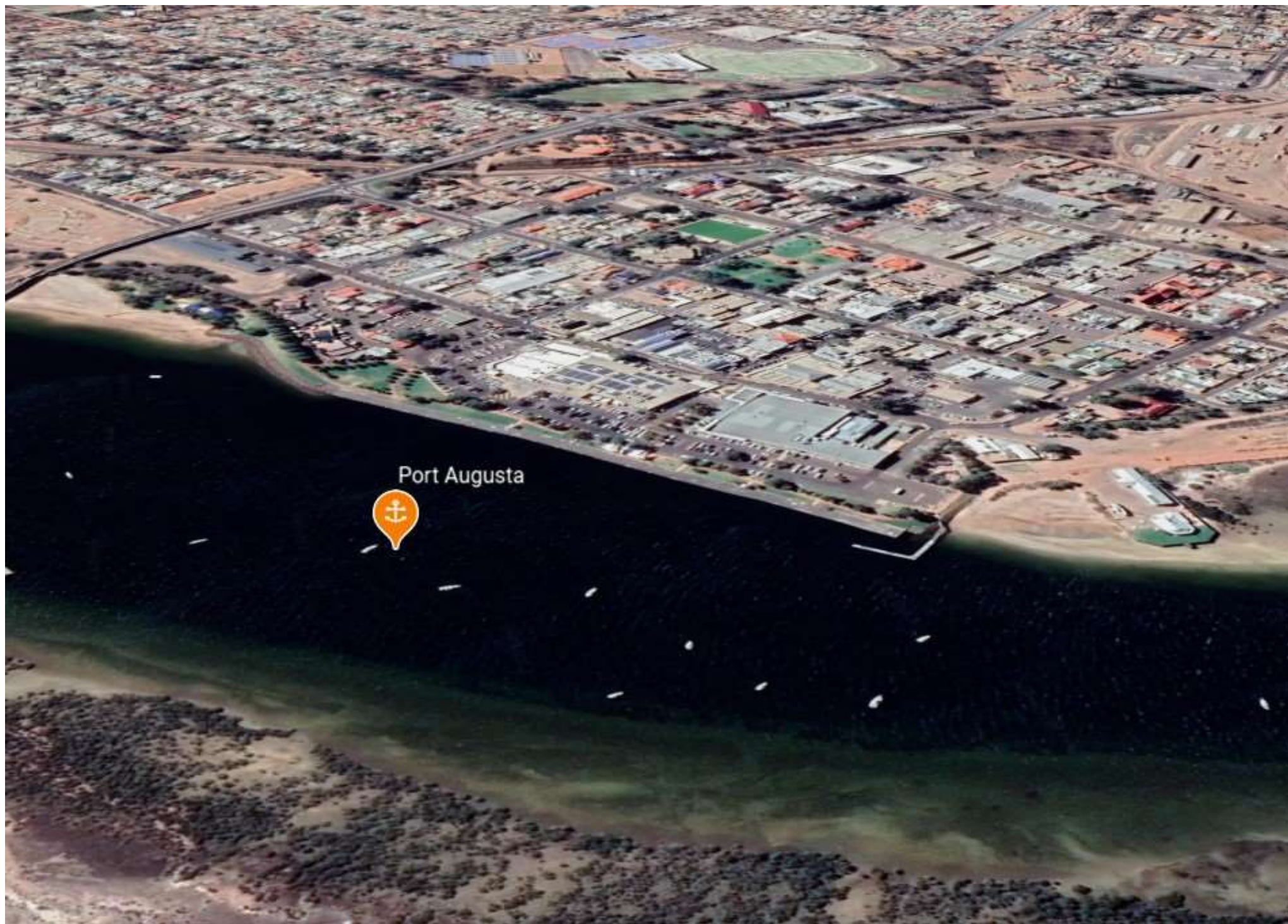
This gives easy walking access to a major shopping centre, although a taxi ride may be necessary to access other services in the town. The local yacht club no longer organizes sailing activities, but does have a modern clubhouse nearby at which hot showers can be arranged.













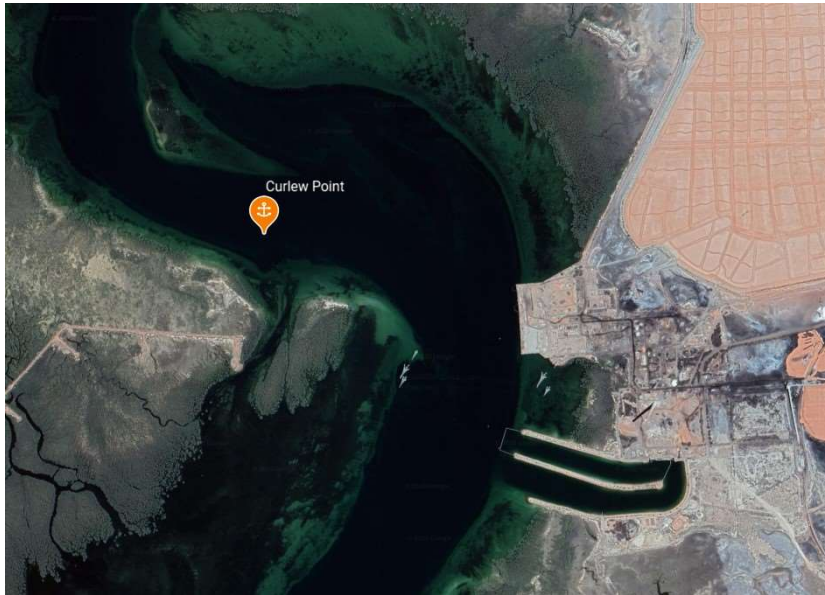
## Curlew Point

### Indicative Anchoring Position

32° 32.1'S 137° 46.1'E

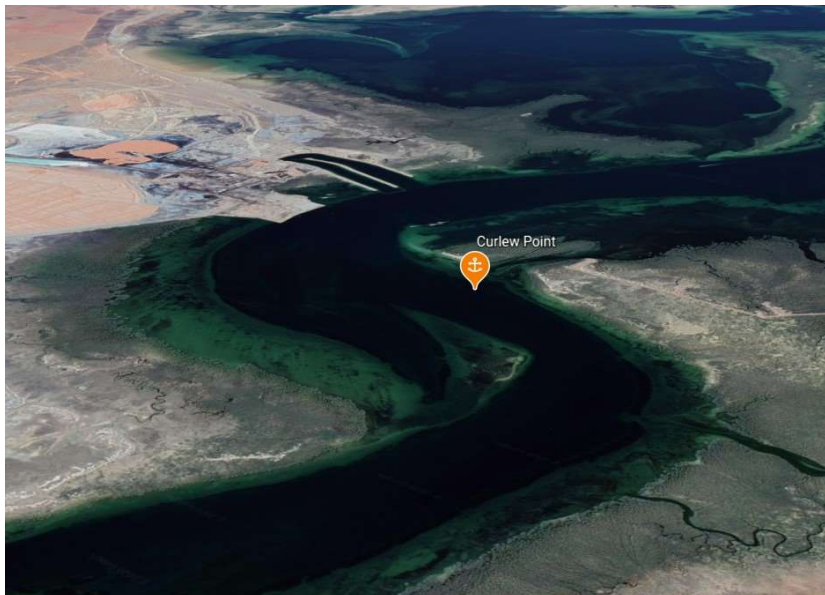
### Shelter from All Directions

Note. Indicative anchoring positions are for reference only and should not be used as waypoints. The best position for anchoring depends on many factors including vessel draft, tide, and forecast wind.

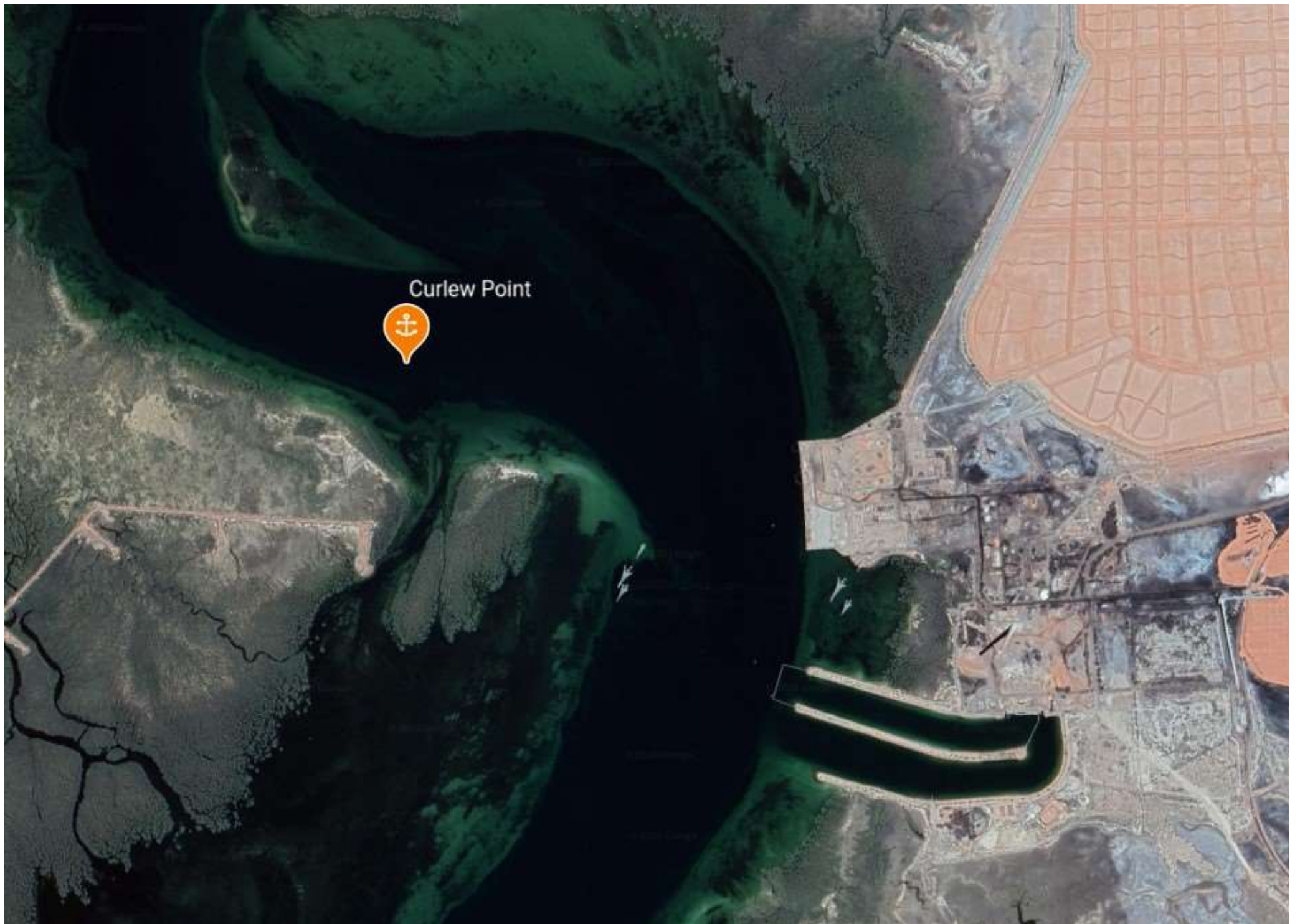


Curlew Point is an interesting anchorage located about 3 miles south of Port Augusta, and close to the site of the old Playford Power Station (now demolished) which is on the opposite bank. It is a mud anchorage with mangroves on the nearby shore.

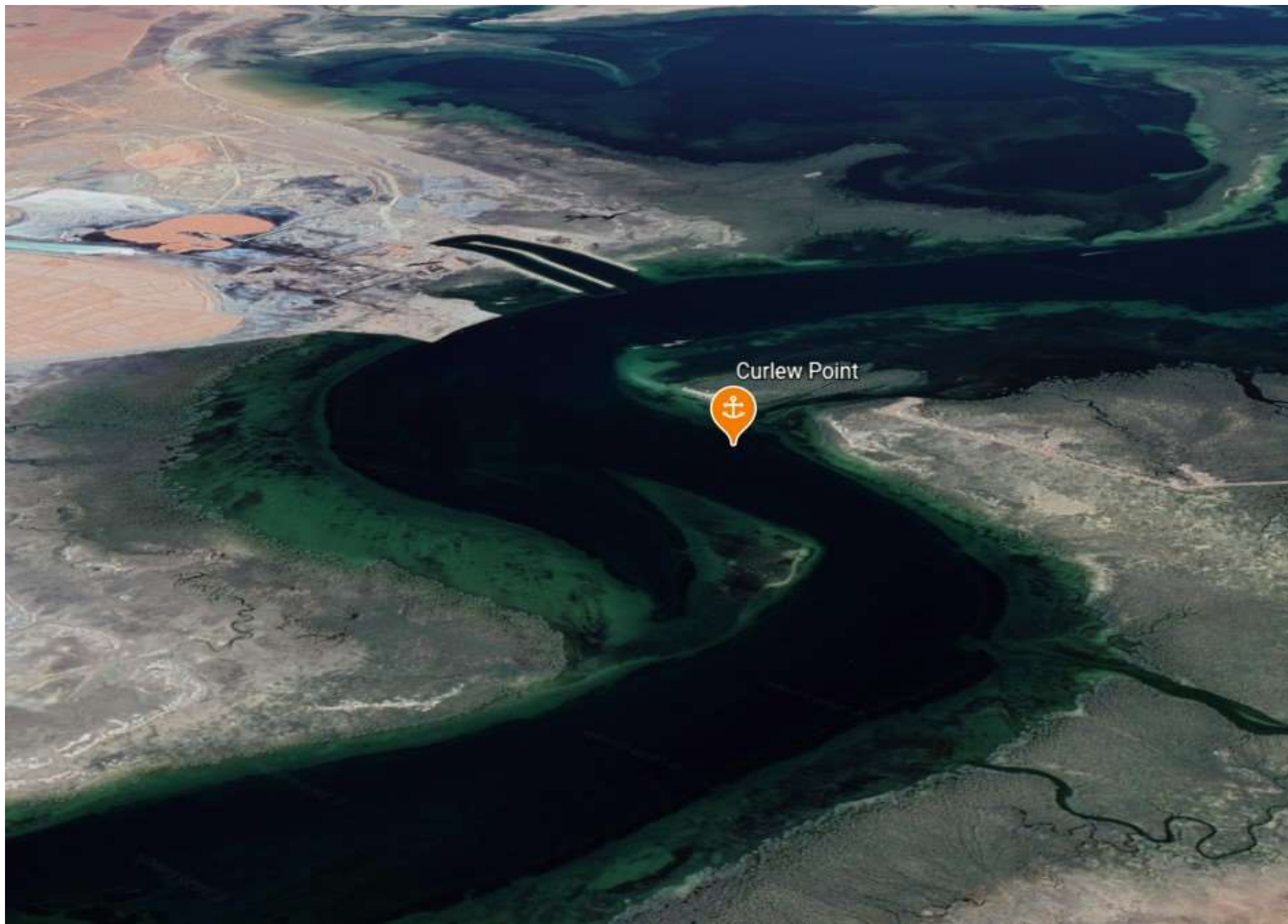
The holding is good, but the strong tidal flow creates some interesting wind-against-tide effects. Shore access is not possible.



Curlew Point



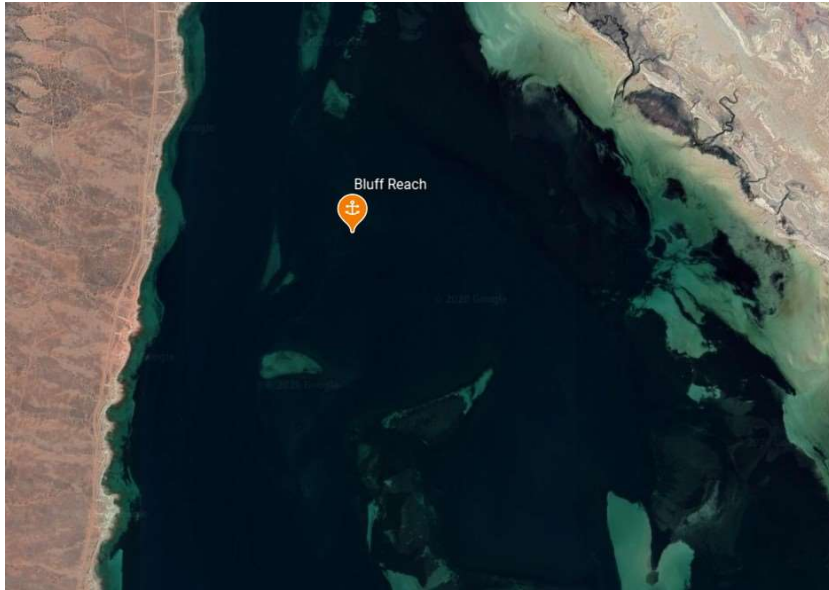




## Bluff Reach

### Indicative Anchoring Position

32° 38.5'S 137° 47.1'E



## Shelter from All Directions

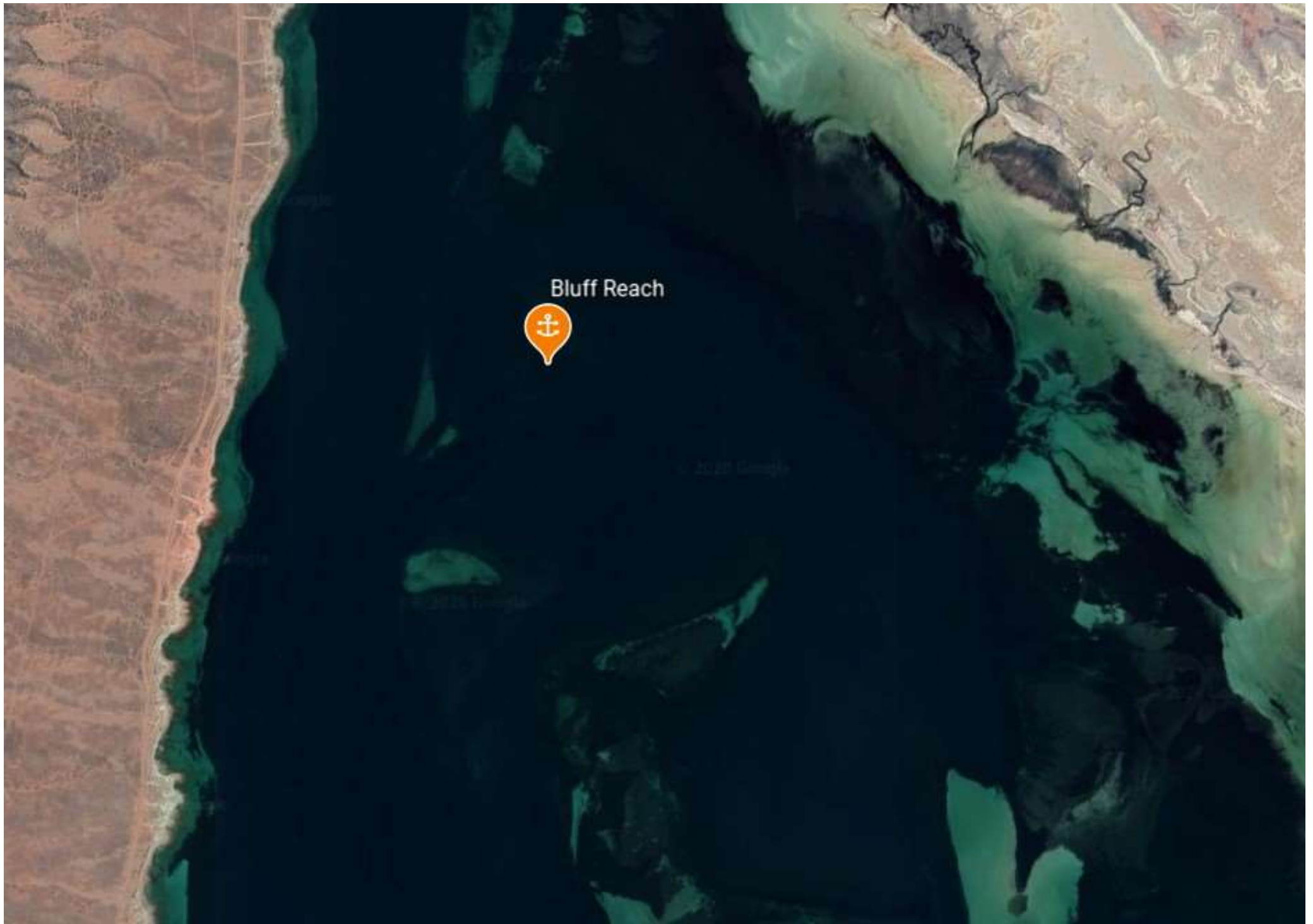
Note. Indicative anchoring positions are for reference only and should not be used as waypoints. The best position for anchoring depends on many factors including vessel draft, tide, and forecast wind.

Bluff Reach is an unlikely looking anchorage which is nowhere near the shore on either side. It is well outside the marked channel and has plenty of depth if approached from the northern end. Careful navigation is needed in this area. Although the shelter is reasonably good from all directions, it is rather exposed to the prevailing summer breezes.

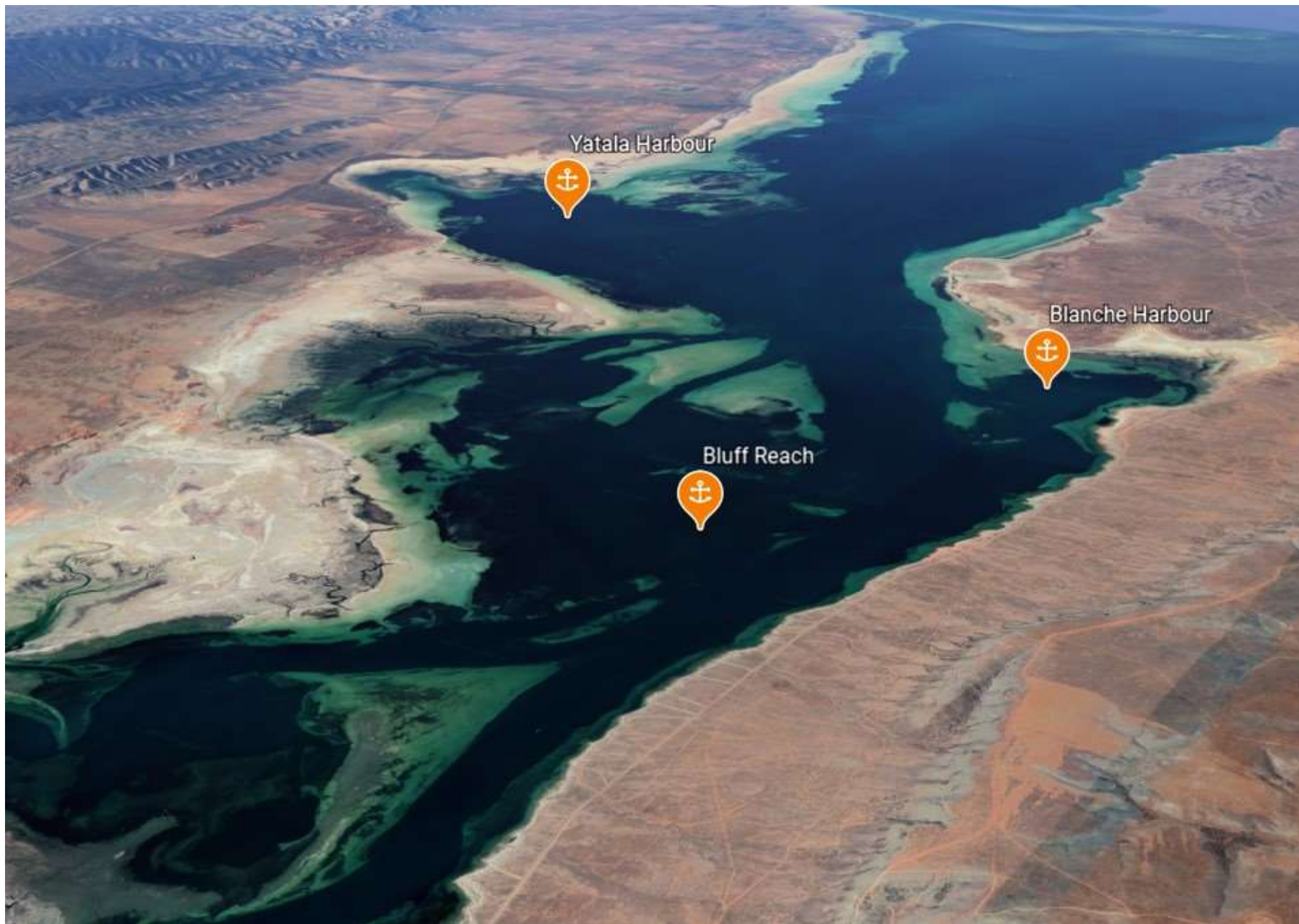
The bottom is mud and the holding good.

Mangrove flats on the eastern shore means that access is not possible. The western shore has holiday shacks scattered along it but very little beach, and while access is possible, it is a very long dinghy ride.











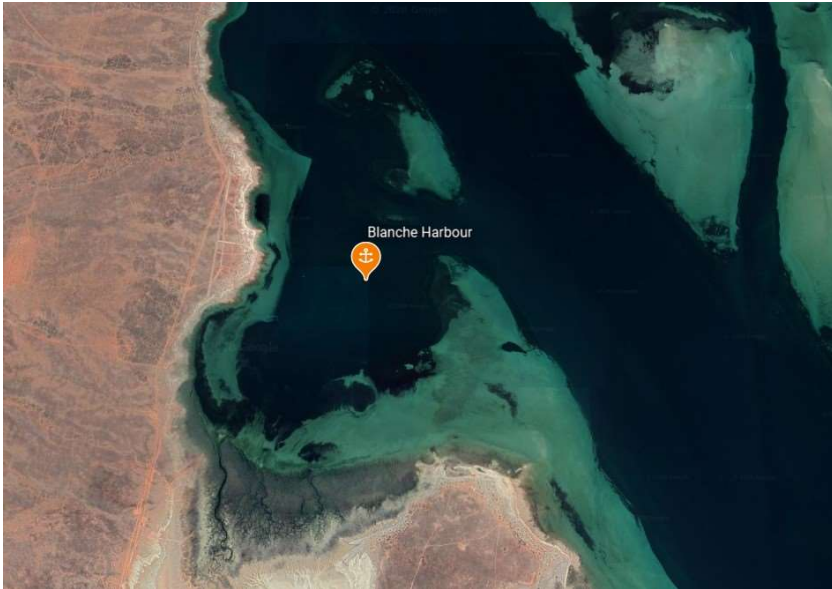
## Blanche Harbour

### Indicative Anchoring Position

32° 41.8'S 137° 46.0'E

Shelter from SE – SW – NW

*Note. Indicative anchoring positions are for reference only and should not be used as waypoints. The best position for anchoring depends on many factors including vessel draft, tide, and forecast wind.*

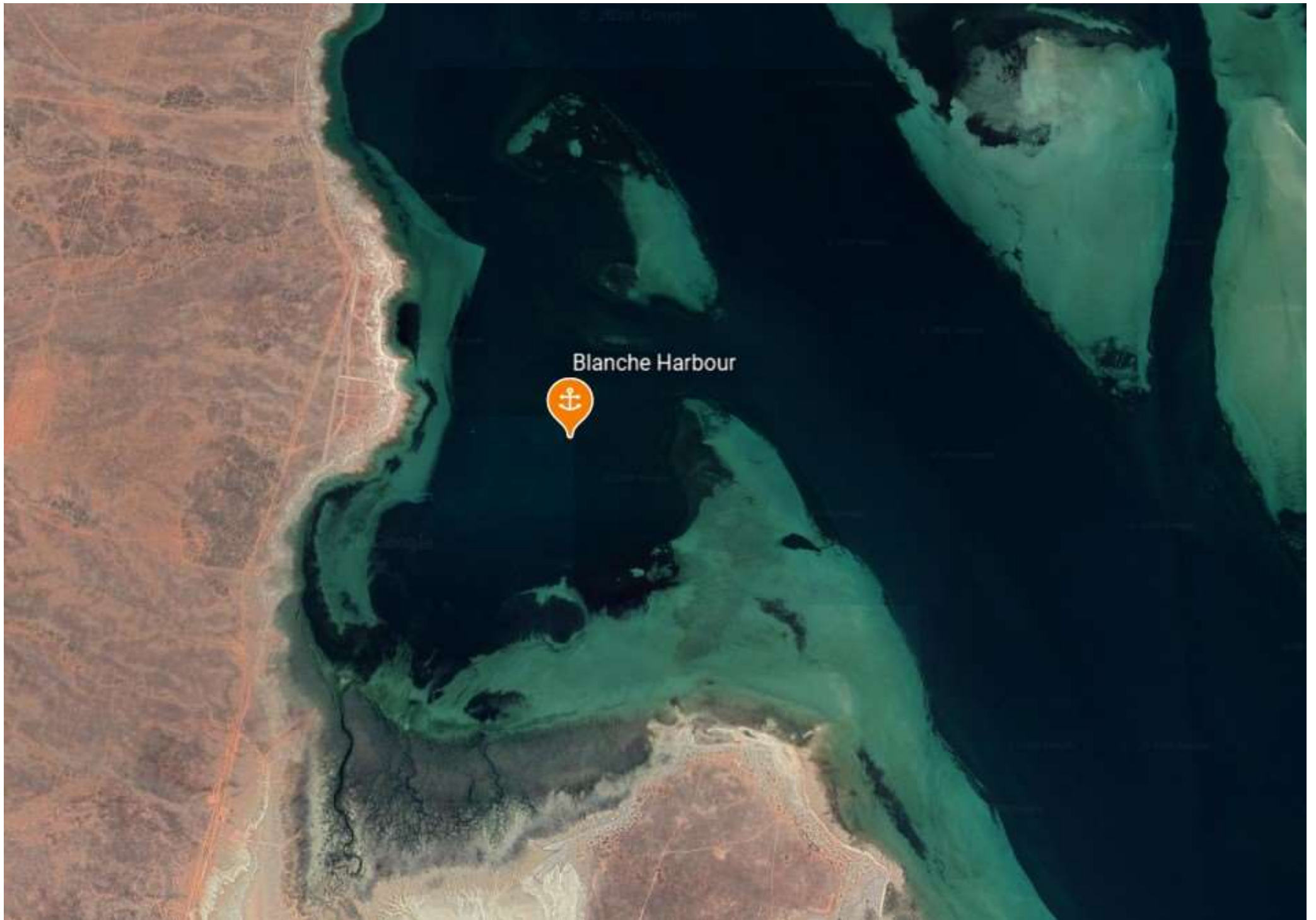


Blanche Harbour is a large natural bay on the western side of the channel. It is a more conventional anchorage than some others in this area – it has a sandy fringing beach instead of mangroves, and a sizeable community of holiday houses along the shore.

The bottom is soft and the holding is only fair. Shore access is possible in the right wind, but it is very exposed to the prevailing summer breezes.









Yatala Harbour



Blanche Harbour





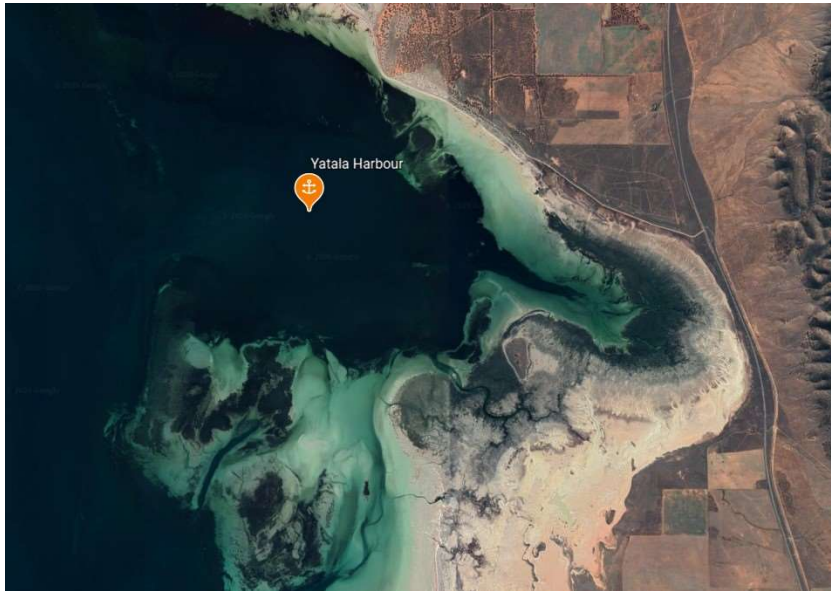
## Yatala Harbour

### Indicative Anchoring Position

32° 44.7'S 137° 52.7'E

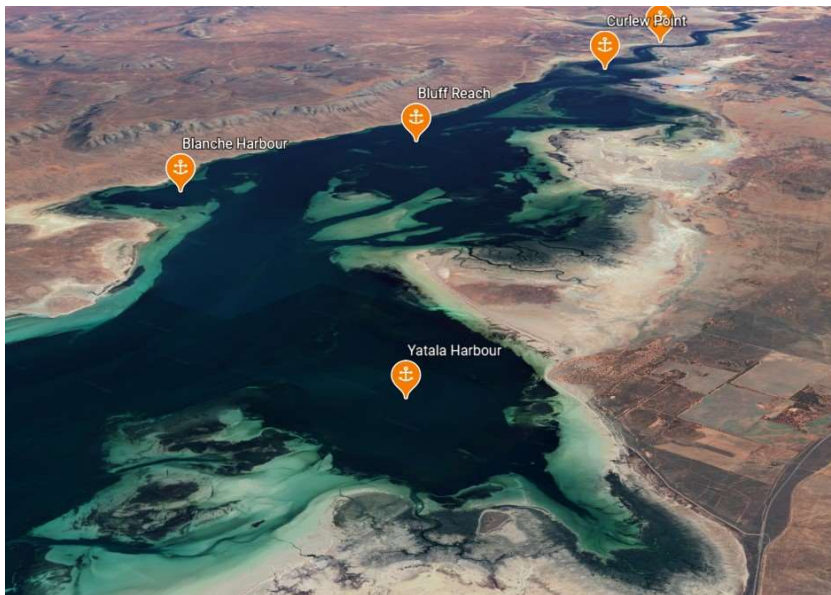
Shelter from N – E – SE

*Note.* Indicative anchoring positions are for reference only and should not be used as waypoints. The best position for anchoring depends on many factors including vessel draft, tide, and forecast wind.



Yatala Harbour is a shallow bay on the eastern side of the channel. Very careful navigation and attention to the depth sounder is needed for safe access, so it is not for the faint-hearted. However, the bottom is mud and the holding good, and it is an interesting place to stop.

It is surrounded by mangroves and shore access is not possible.



Yatala Harbour

