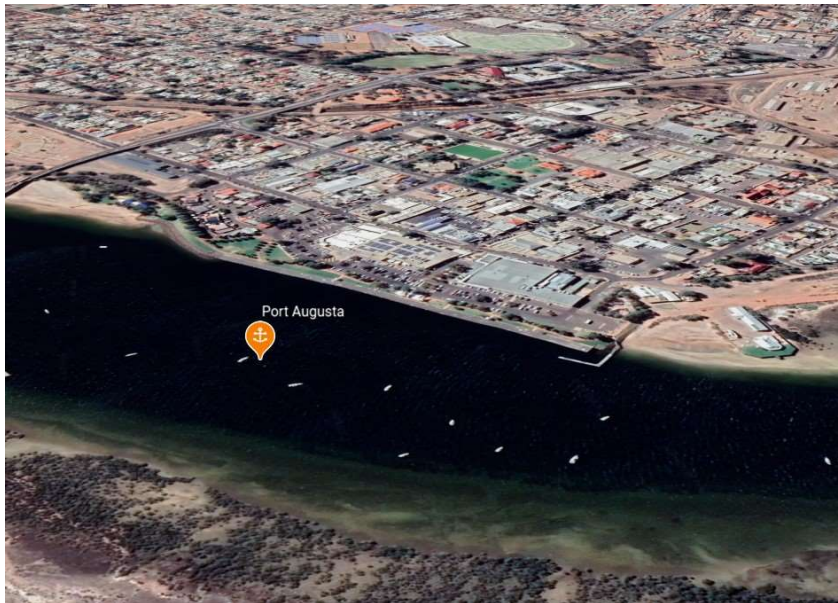
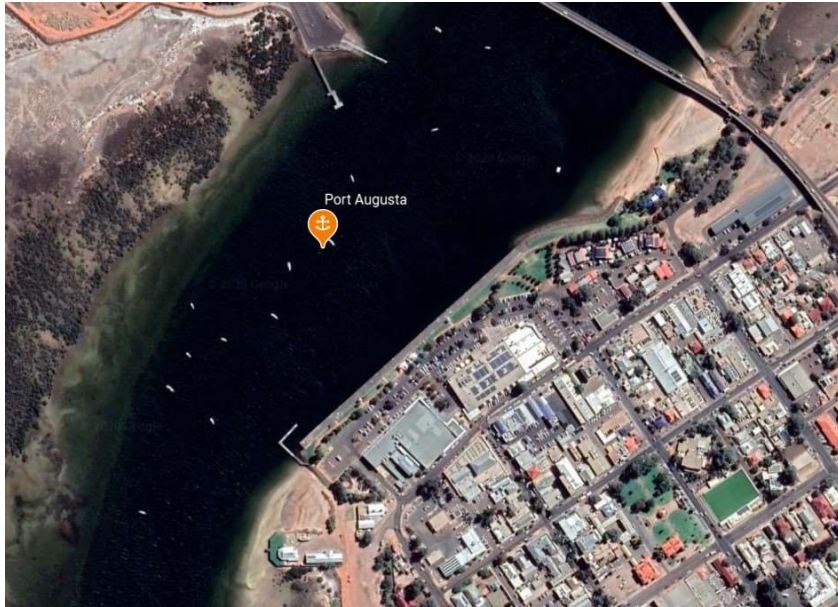


## Port Augusta

### Floating Pontoon

32° 29.4'S 137° 45.5'E



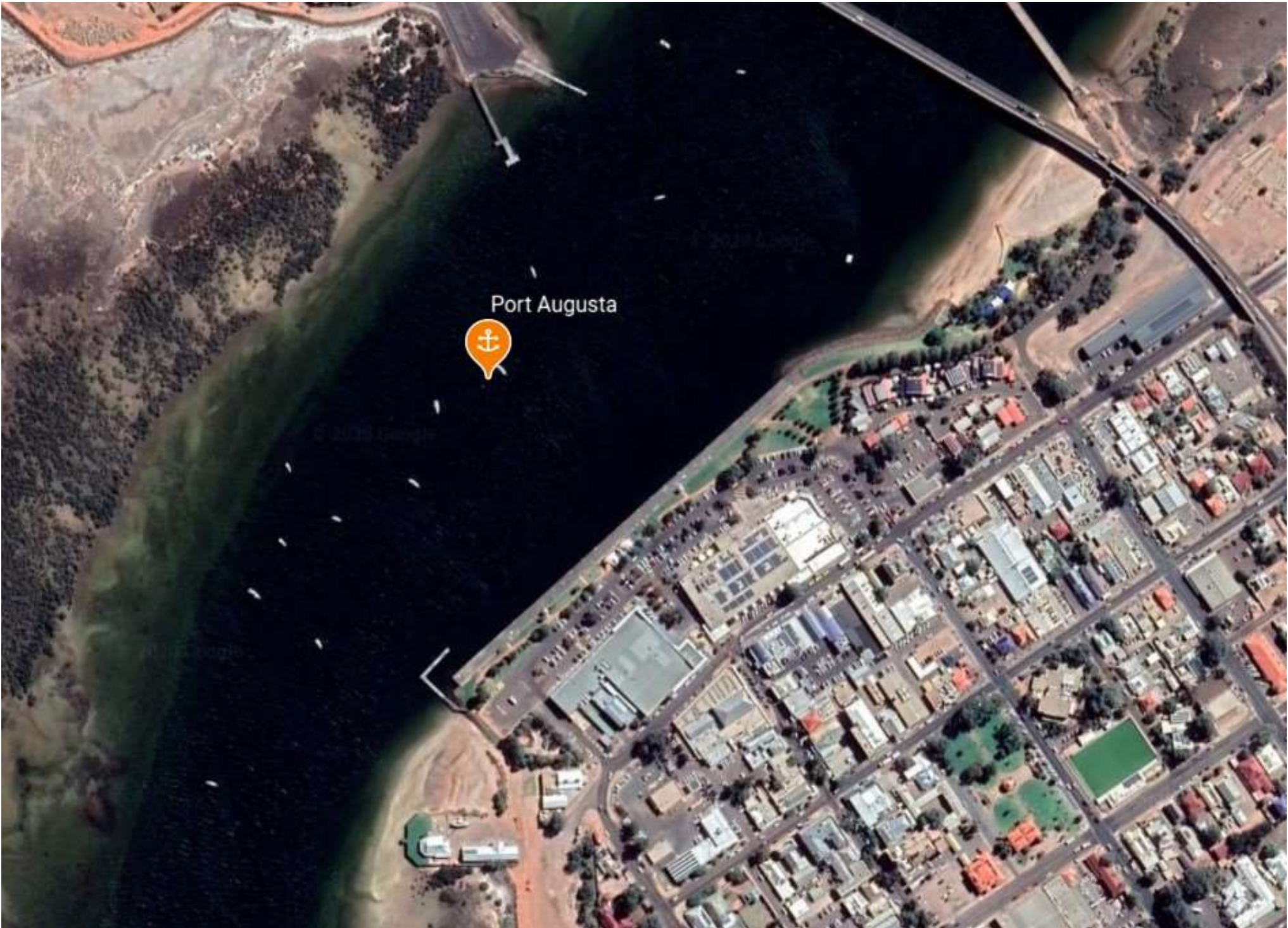
## Shelter from All Directions

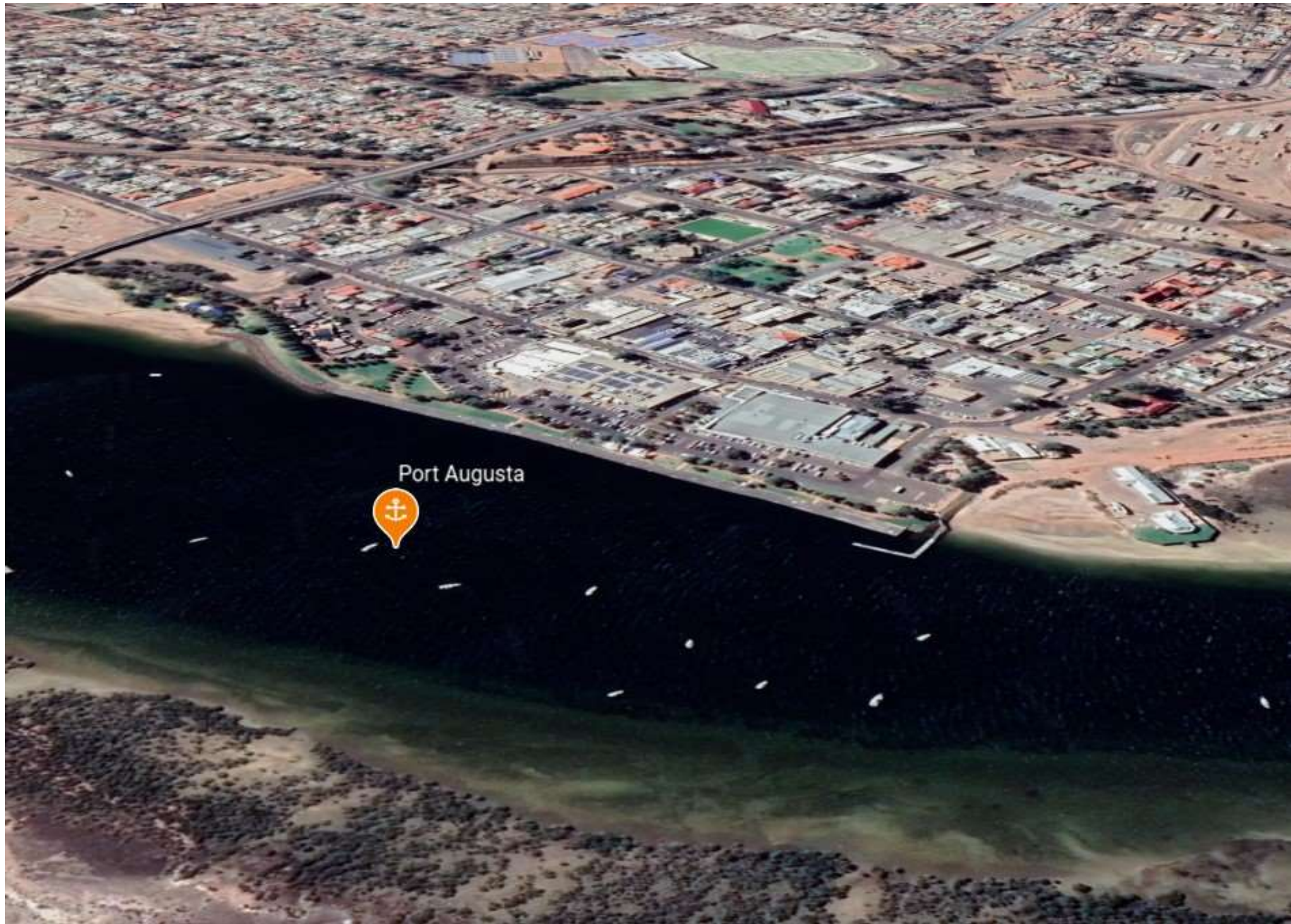
*Note.* The floating pontoon position is for reference only and should not be used as a waypoint.

Port Augusta is the northernmost point of Spencer Gulf which is navigable, and the Gulf is really just a wide channel in this area. There is a mooring ground here which always presents the danger of a snagged anchor, but yachts can use the floating pontoon attached to the southern bank.

This gives easy walking access to a major shopping centre, although a taxi ride may be necessary to access other services in the town. The local yacht club no longer organizes sailing activities, but does have a modern clubhouse nearby at which hot showers can be arranged.

Port Augusta





Port Augusta

