

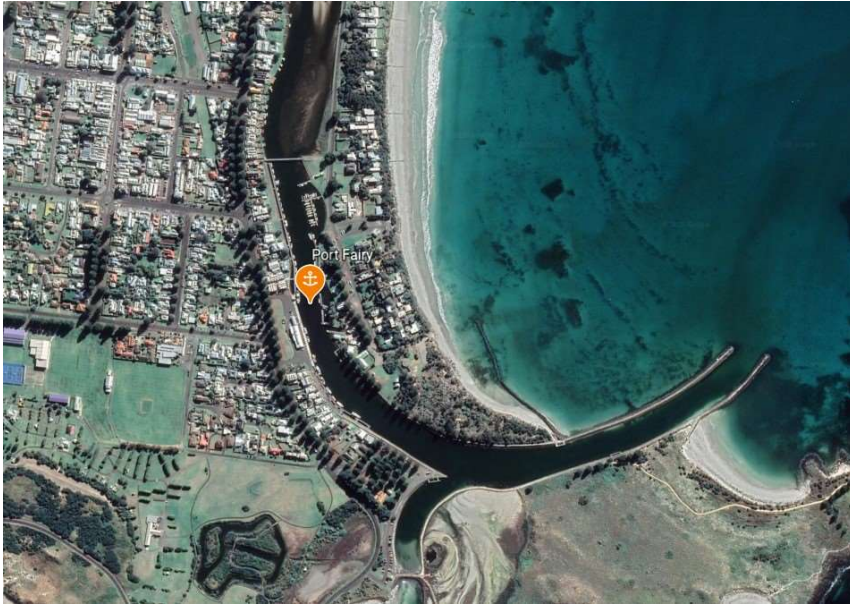
Port Fairy

Entrance Beacon Position

38° 23.0'S 142° 15.2'E

Shelter from All Directions

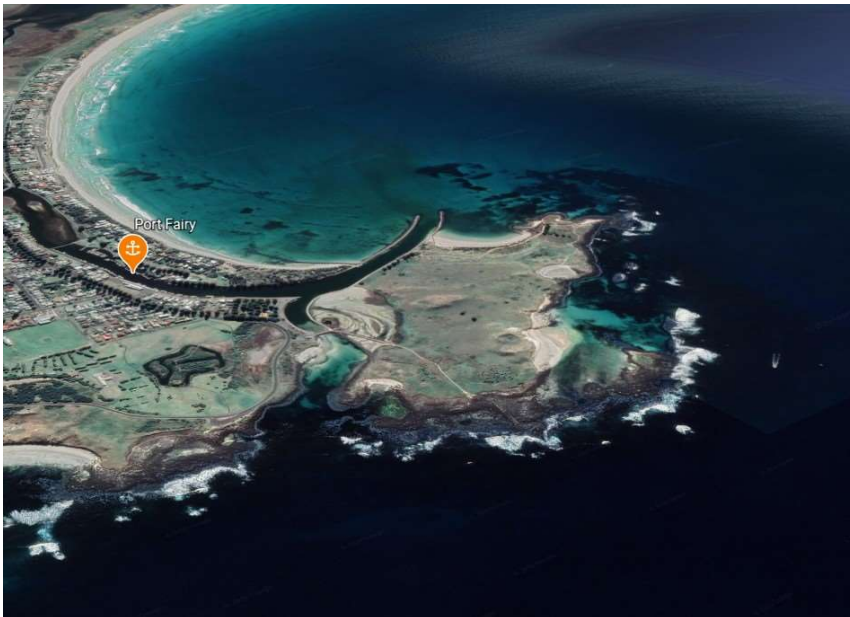
Note. The entrance beacon coordinates are for reference only and should not be used as a waypoint.

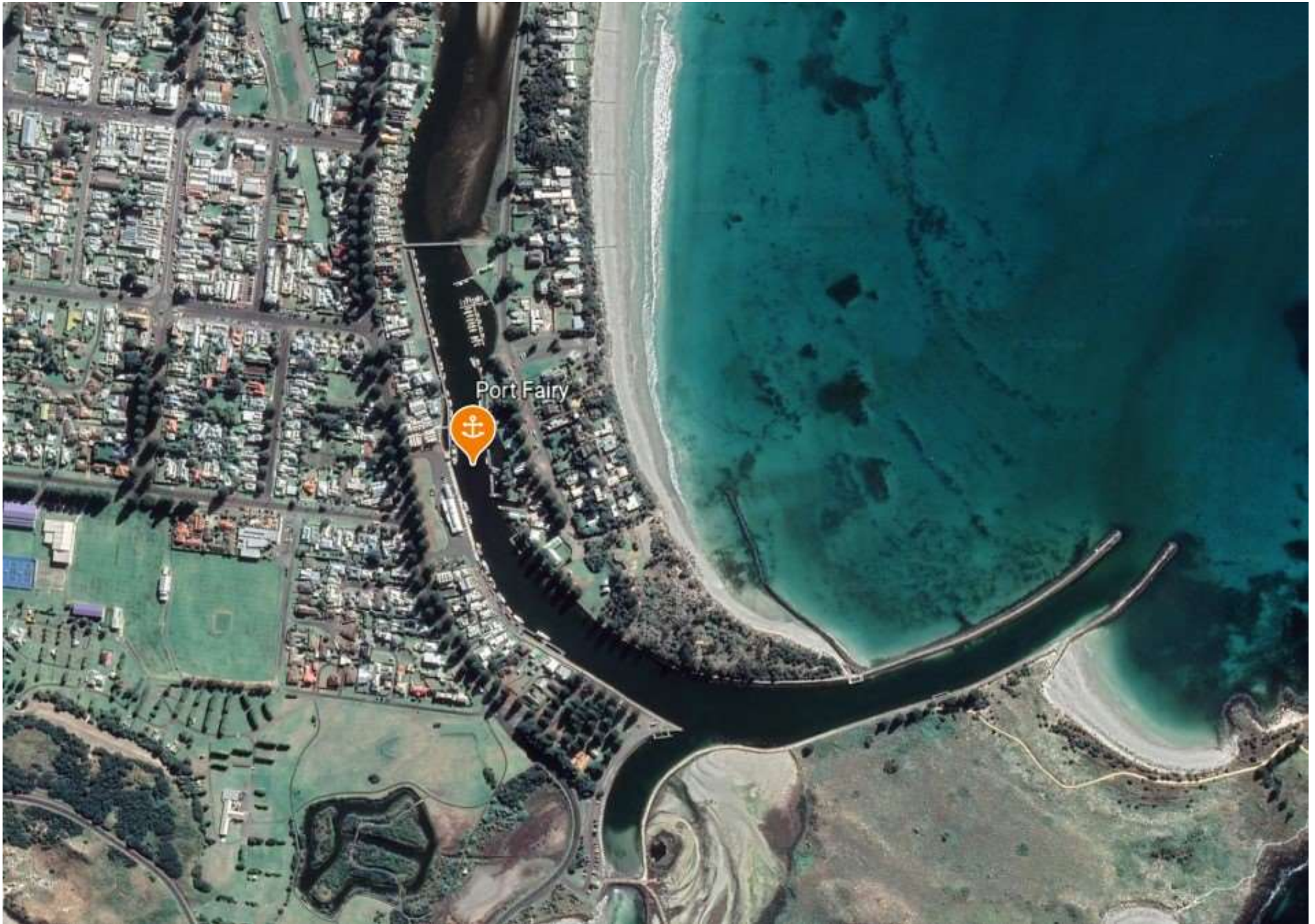


Port Fairy is an attractive and historic town situated on the Moyne River about 30 miles east of Portland. There is no marina, but wharf facilities exist along both sides of the river. It is a popular tourist town and there are many shops and restaurants along the waterfront.

A fuel berth with 24 hour credit access is available, and a key giving access to toilets and showers is provided after checking in.

The port is managed by the local council, and the Port Manager can be called on (03) 5568 1108 to make arrival arrangements. For a full description of services and contacts, refer to the council website (<http://www.moyne.vic.gov.au/Our-Services/Port-of-Port-Fairy>)







Port Fairy

