

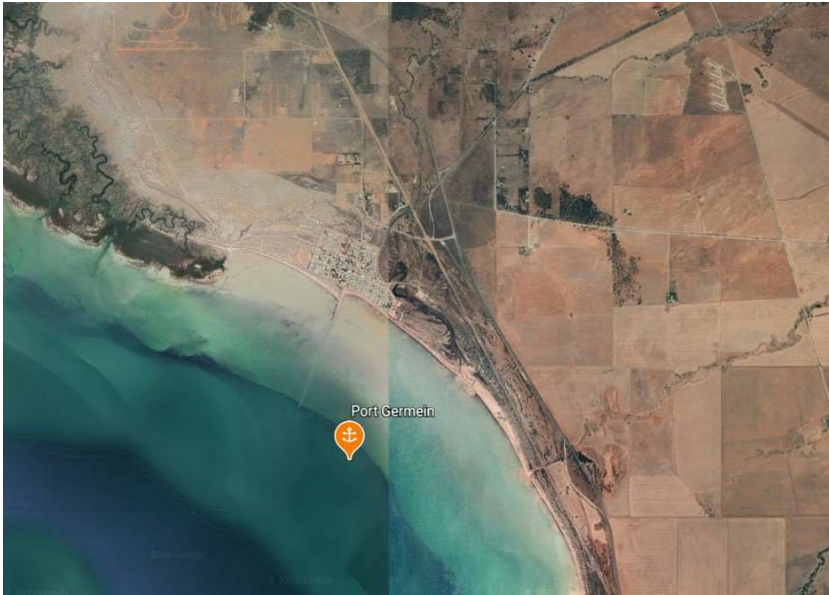
## Port Germein

### Indicative Anchoring Position

33° 02.4'S 137° 59.0'E

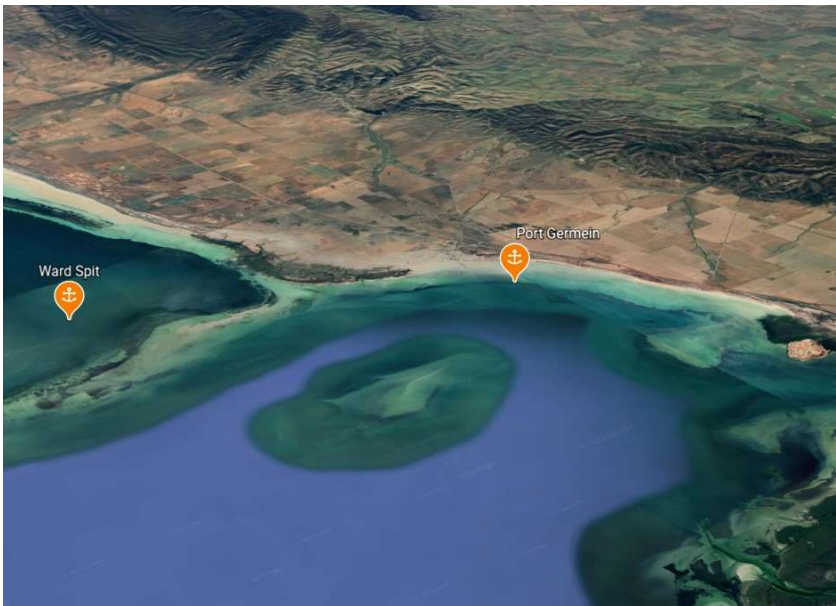
Shelter from NW – NE

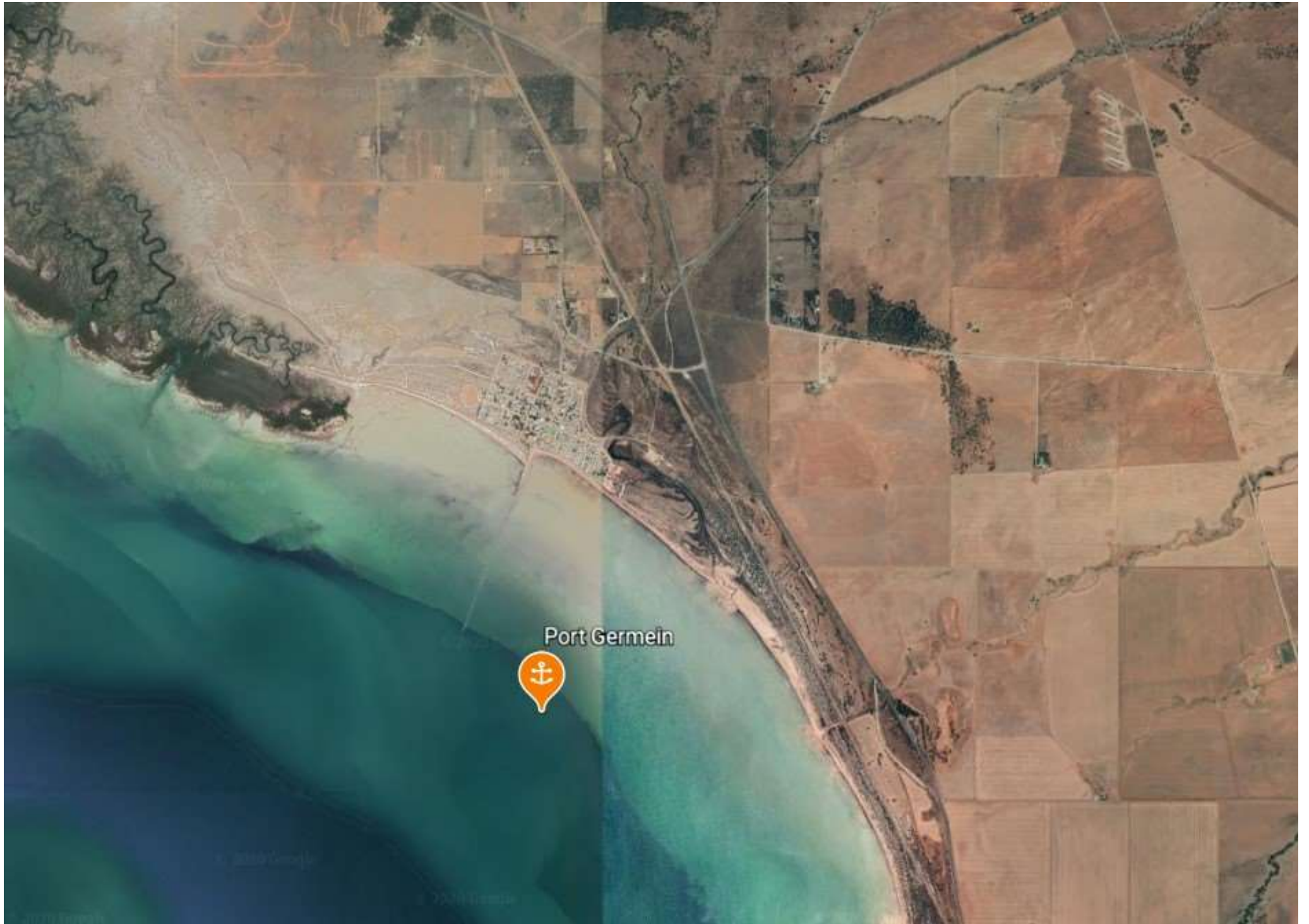
*Note.* Indicative anchoring positions are for reference only and should not be used as waypoints. The best position for anchoring depends on many factors including vessel draft, tide, and forecast wind.

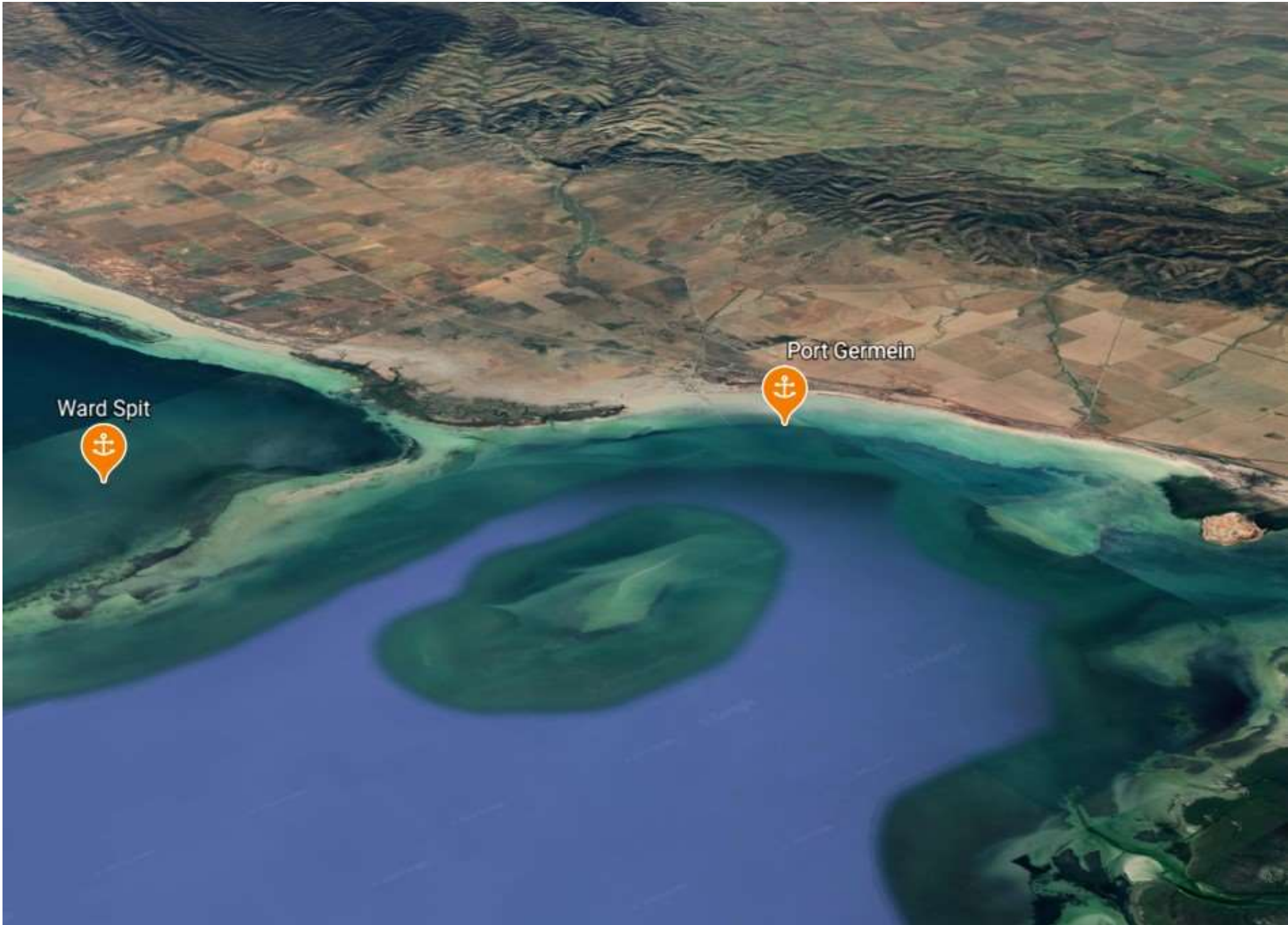


Port Germein is at the north-eastern part of Germein Bay. It was once an important shipping port for grain, and still has an extremely long jetty extending across the very large tidal flat. The suggested anchoring point is just west of the jetty, but anchoring is possible wherever the wind and depth are suitable.

The very wide tidal flat makes shore access difficult unless the jetty is used.







Ward Spit

Port Germein