

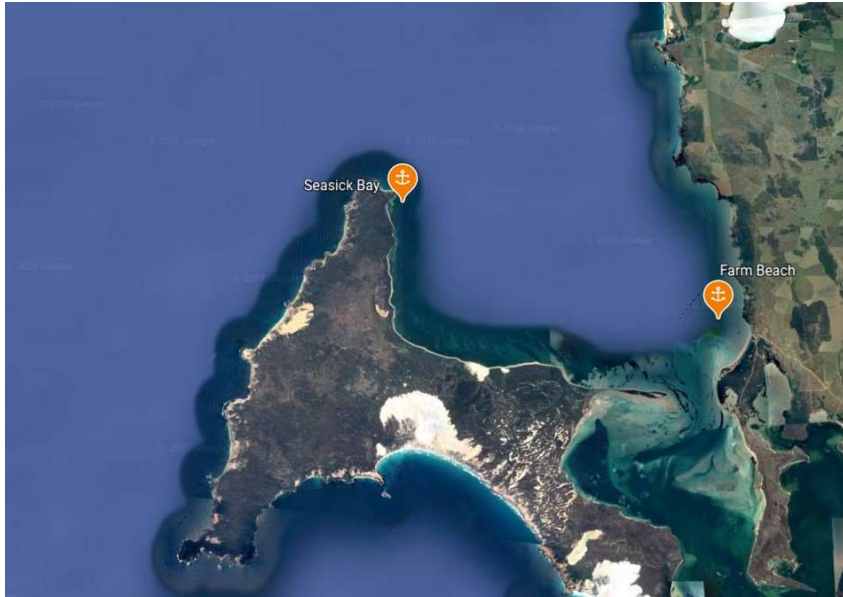
## Seasick Bay

### Indicative Anchoring Position

34° 26.4'S 135° 13.0'E

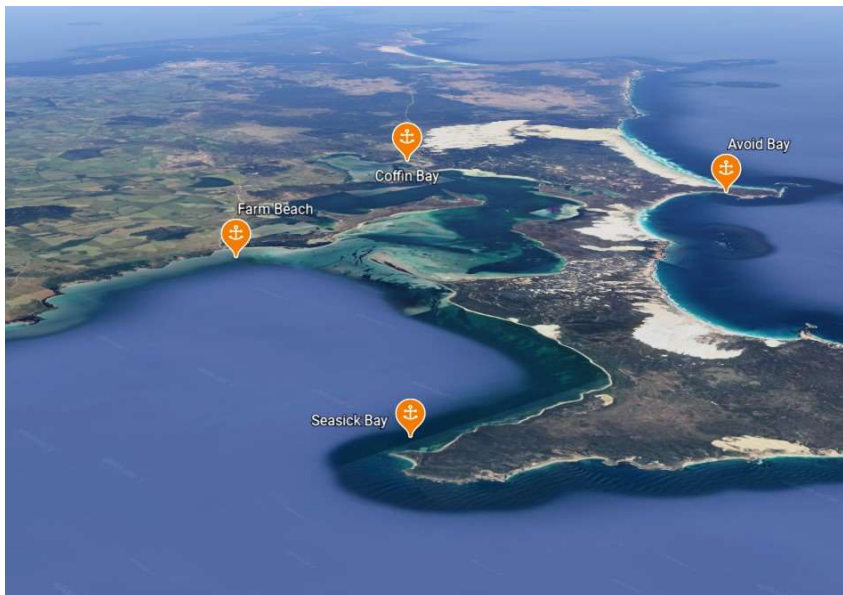
Shelter from NW – W – SW

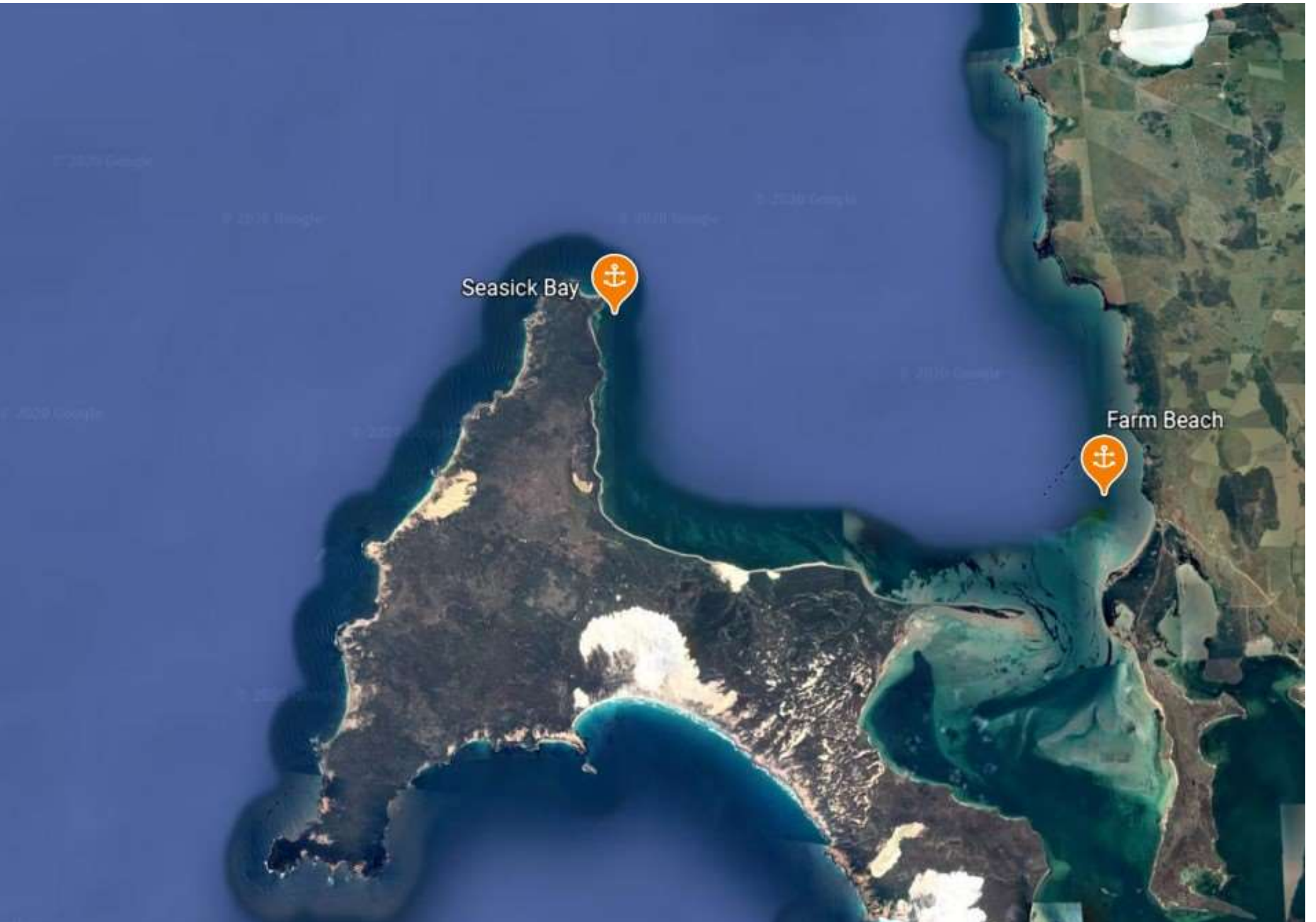
*Note.* Indicative anchoring positions are for reference only and should not be used as waypoints. The best position for anchoring depends on many factors including vessel draft, tide, and forecast wind.



While it may seem odd to include an anchorage called Seasick Bay in this guide, it is a useful stop when arriving or departing the Coffin Bay township area. It is located immediately south of Pt Sir Isaac, and is about eight miles from the Farm Beach anchorage and the channel entrance. Obviously it is inclined to be roly, but it has a sandy bottom, and is secure in westerly winds.

Shore access is easy on a sandy beach.

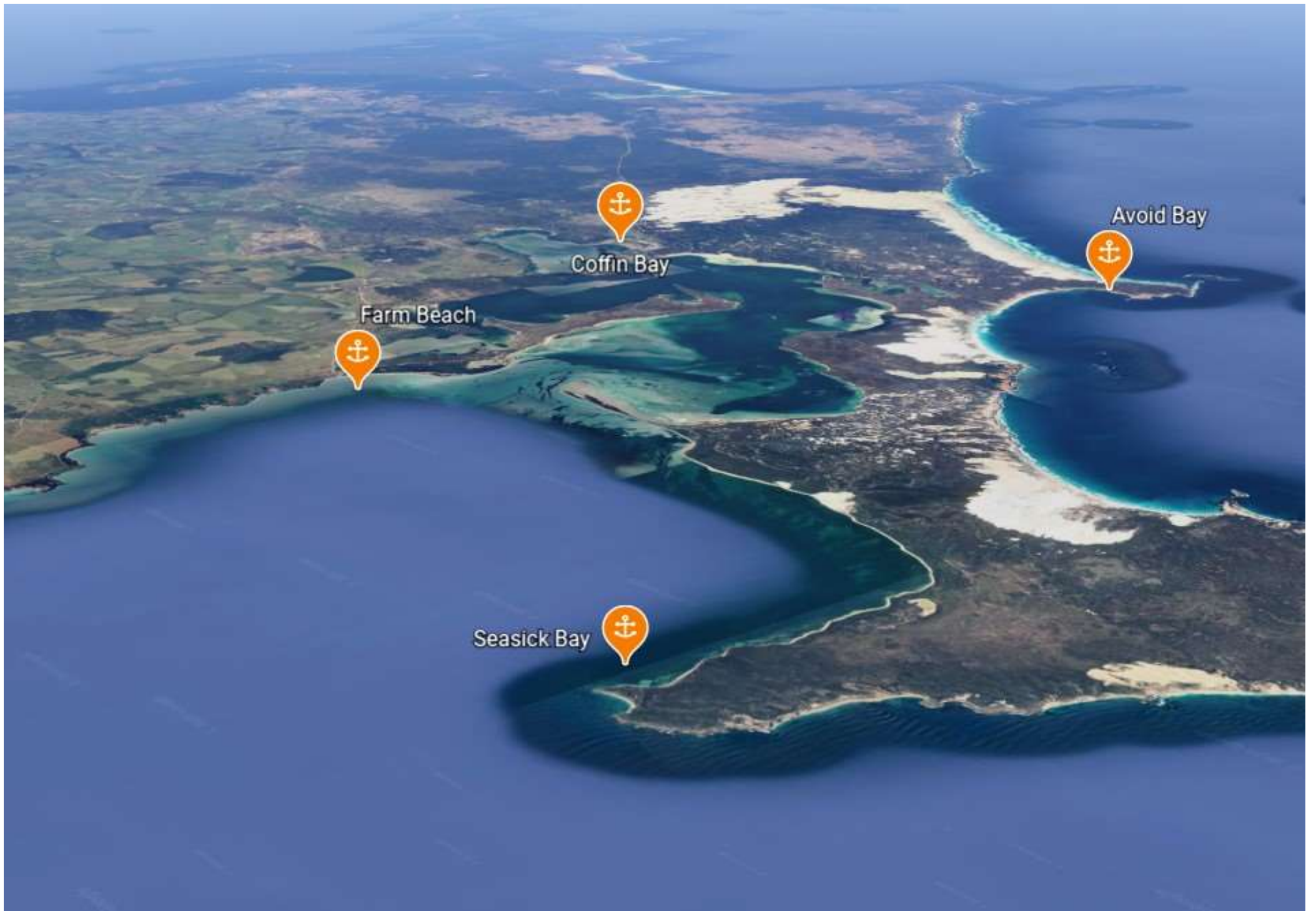




Seasick Bay

Farm Beach





Farm Beach



Coffin Bay



Seasick Bay



Avoid Bay