

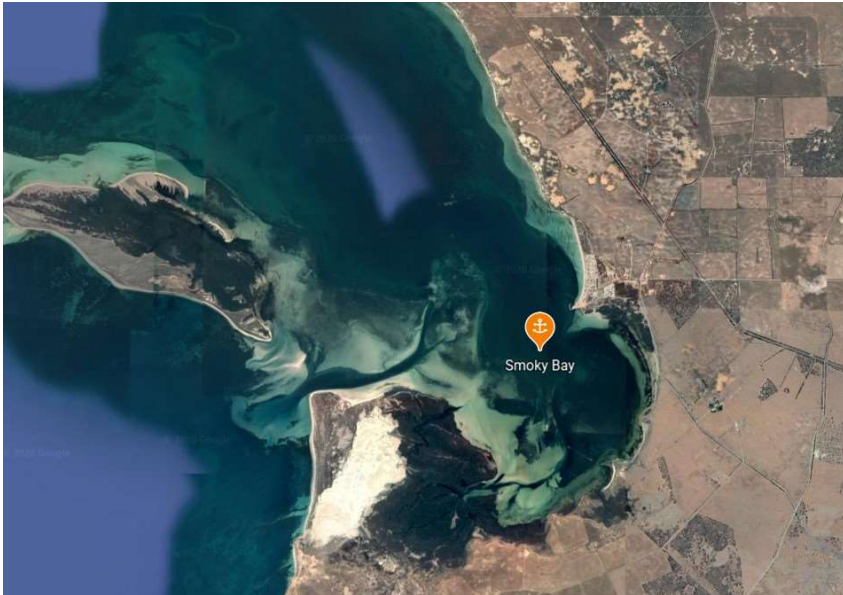
## Smoky Bay

### Indicative Anchoring Position

32° 22.1'S 133° 55.0'E

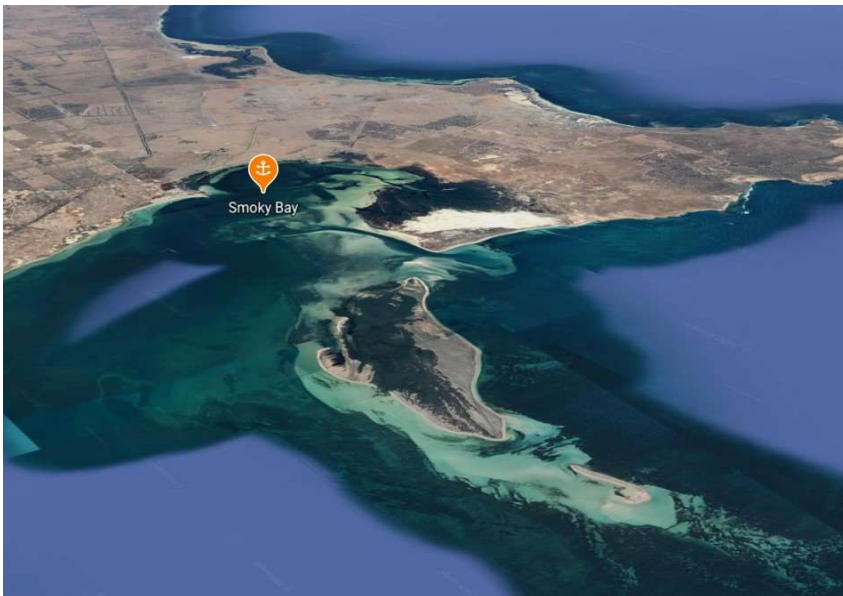
### Shelter from N – E – SW

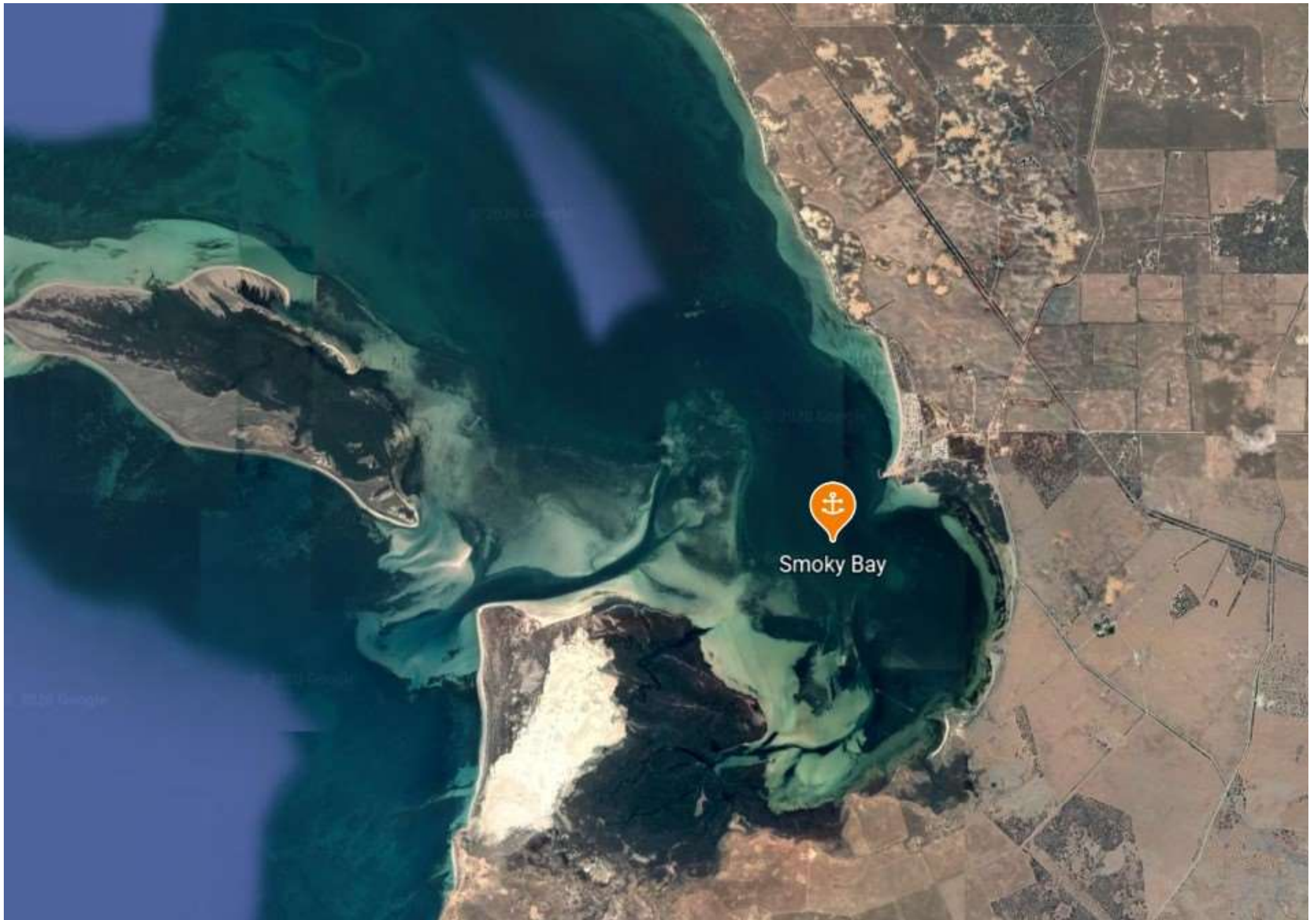
*Note.* Indicative anchoring positions are for reference only and should not be used as waypoints. The best position for anchoring depends on many factors including vessel draft, tide, and forecast wind.



Smoky Bay is a small inlet about 20 miles south-east of Ceduna. It has extensive sand shoals which, together with the nearby Eyre Island, provide good shelter. The small township of Smoky Bay is located on the eastern side.

The depth is not sufficient for keel boats at the head of the bay, but sufficient water is available at the recommended anchoring position. The bottom is weed on sand and the holding is good. Shore access is easy on the town beach.







Smoky Bay