

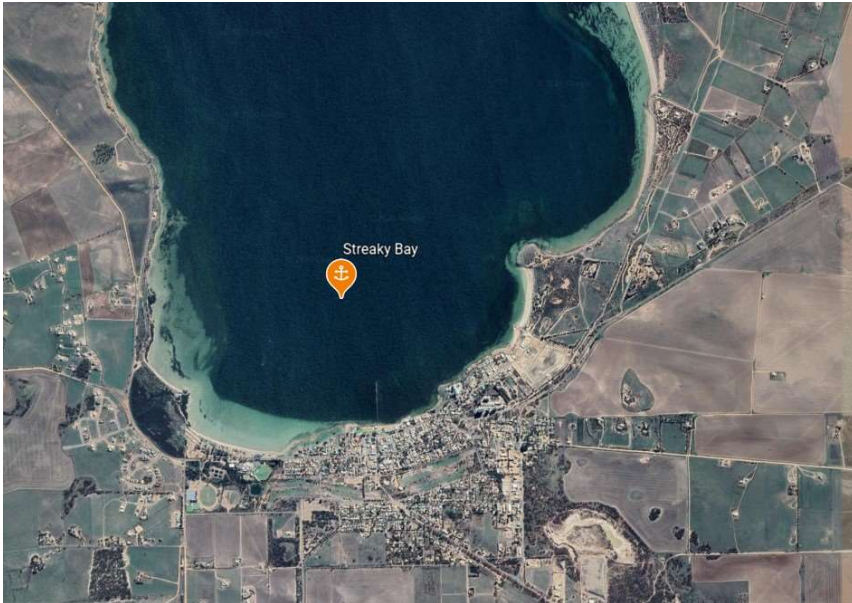
Streaky Bay

Indicative Anchoring Position

32° 47.1'S 134° 12.5'E

Shelter from E – S – W

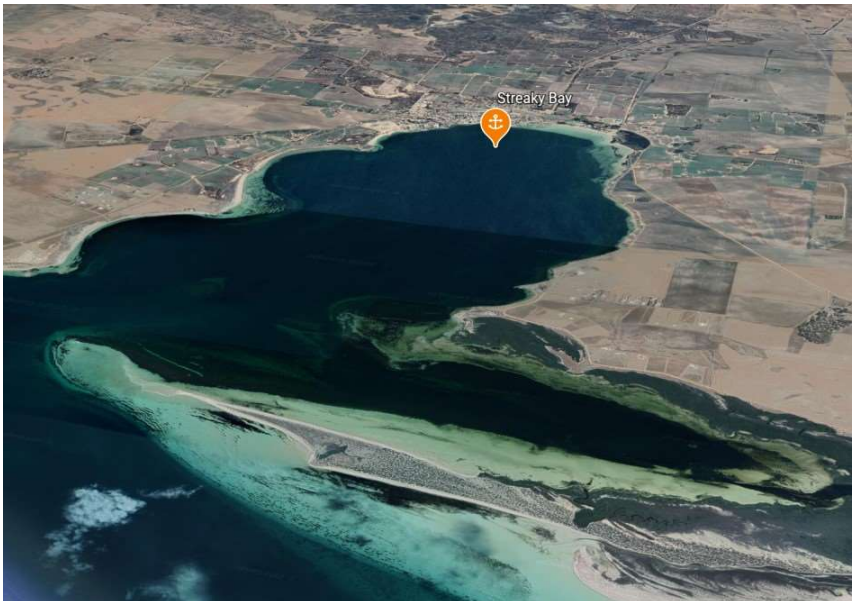
Note. Indicative anchoring positions are for reference only and should not be used as waypoints. The best position for anchoring depends on many factors including vessel draft, tide, and forecast wind.

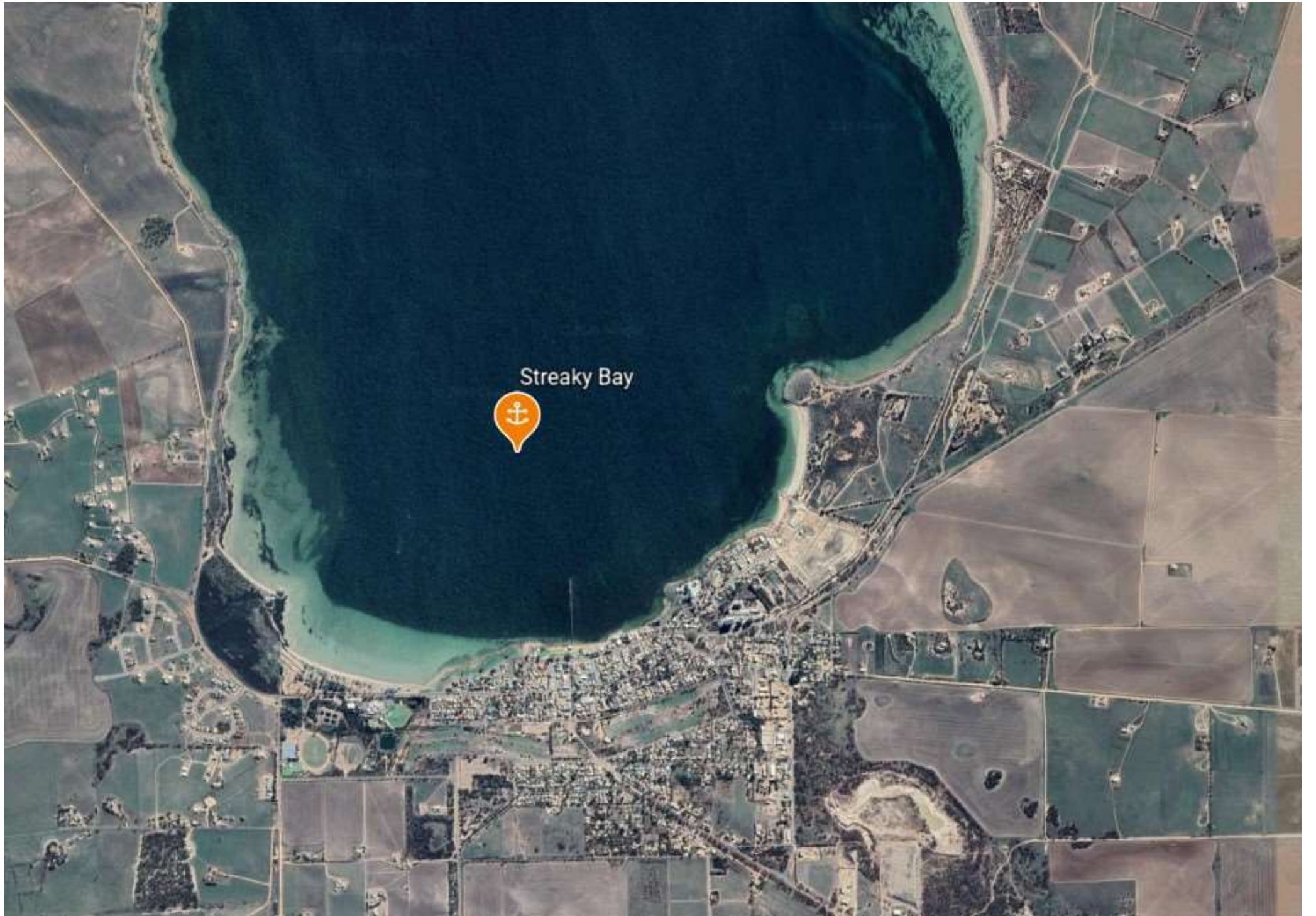


Streaky Bay is a large open bay located about 30 miles south-east of Ceduna. It is also the name of a substantial township at its southern end. There are many anchorages available in the bay as a whole, but this Guide describes only two.

The township of Streaky Bay has an excellent anchorage although careful navigation is required due to shoals and rocks on the approach. The bottom is thin weed on sand and the holding is good. Shore access is easy and the town jetty can also be accessed by dinghy.

As can be seen in the Google Earth images, there are extensive sand shoals to the north of the indicated anchorage. Some exploration (with careful attention to depth) is possible in this area, and other very scenic and comfortable anchoring locations certainly exist.





Streaky Bay



