

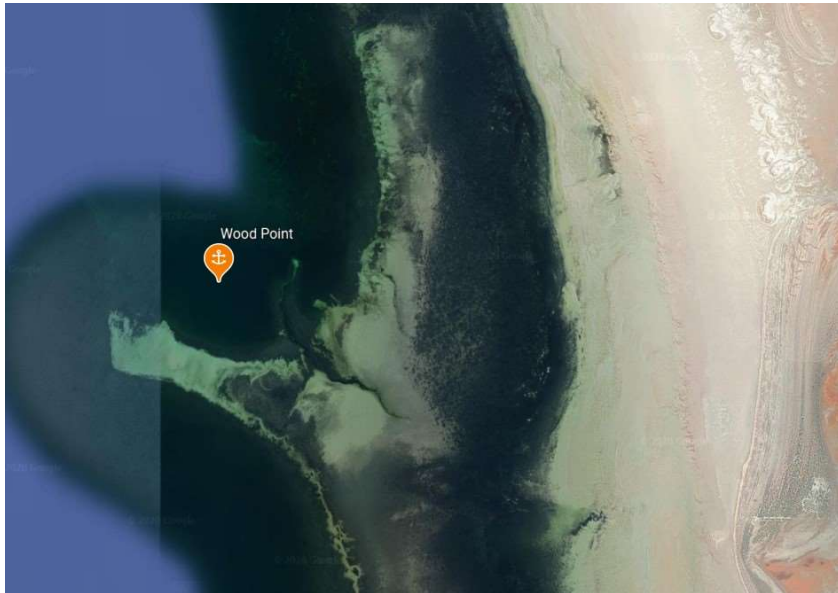
Wood Point

Indicative Anchoring Position

33° 21.6'S 137° 48.4'E

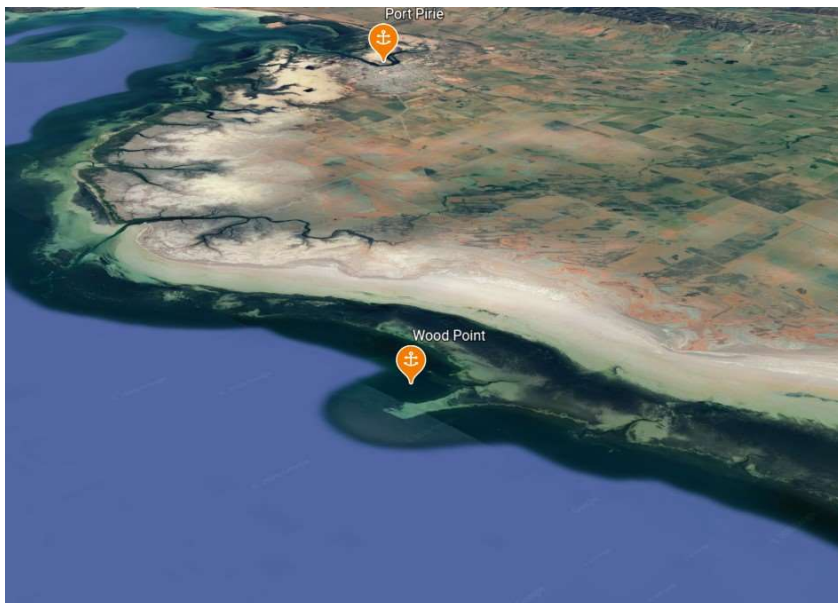
Shelter from SE – S – SW

Note. Indicative anchoring positions are for reference only and should not be used as waypoints. The best position for anchoring depends on many factors including vessel draft, tide, and forecast wind.



This anchorage is behind a submerged sand spit which extends about 3 miles west of Wood Point. This provides excellent protection from the sea, but not of course from the wind. Nevertheless it provides a surprisingly comfortable place to overnight in the right conditions. Charted depth contours are reported to be inaccurate in this area, so vessels should monitor depth carefully when approaching.

The bottom is sand and the holding good. The shore is very distant and comprised of muddy mangrove flats, so access is not possible.



Wood Point



