

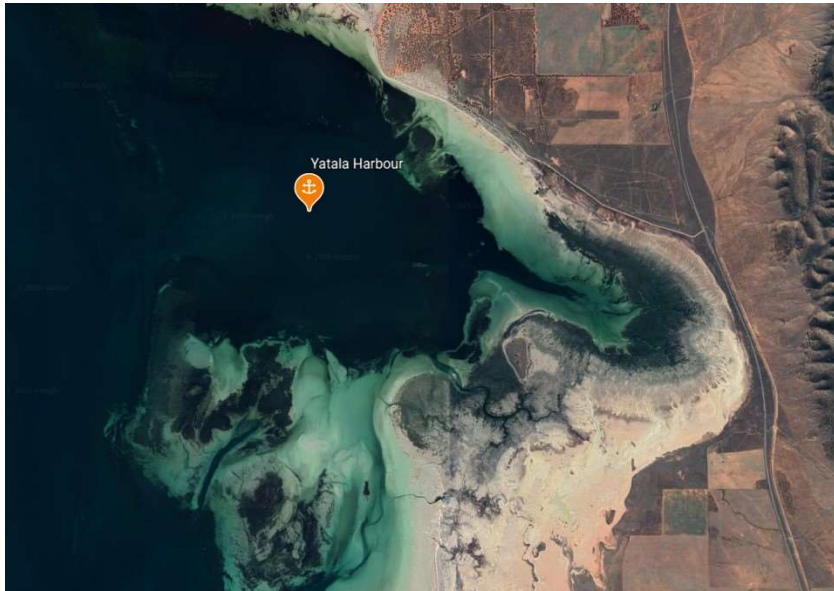
Yatala Harbour

Indicative Anchoring Position

32° 44.7'S 137° 52.7'E

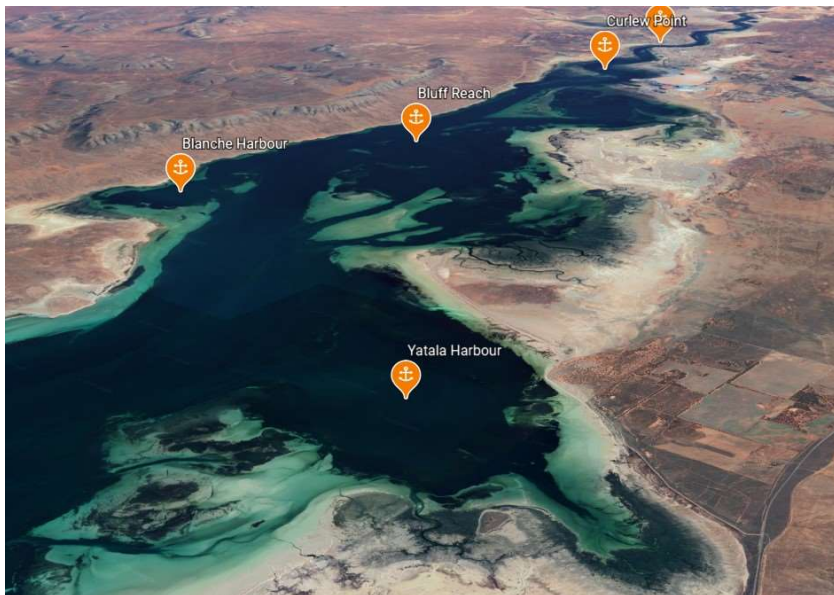
Shelter from N – E – SE

Note. Indicative anchoring positions are for reference only and should not be used as waypoints. The best position for anchoring depends on many factors including vessel draft, tide, and forecast wind.



Yatala Harbour is a shallow bay on the eastern side of the channel. Very careful navigation and attention to the depth sounder is needed for safe access, so it is not for the faint-hearted. However, the bottom is mud and the holding good, and it is an interesting place to stop.

It is surrounded by mangroves and shore access is not possible.



Yatala Harbour

